



BENCH MOUNT ELECTRIC SHARPENER FOR CHAINSAWS ASSEMBLY & OWNER'S MANUAL



WARNING:

Read carefully and understand all **ASSEMBLY AND OPERATION INSTRUCTIONS** before operating. Failure to follow the safety rules and other basic safety precautions may result in serious personal injury.

Item# CS-MBCJR

Thank you very much for choosing this product! For future reference, please complete the owner's record below:

Model: ____CS-MBCJR____ Purchase Date: _____

Save the receipt, warranty and these instructions. It is important that you read the entire manual to become familiar with this product before you begin using it.

This product is designed for certain applications only. The manufacturer cannot be responsible for issues arising from modification. We strongly recommend this product not be modified and/or used for any application other than that for which it was designed. If you have any questions relative to a particular application, DO NOT use the product until you have first contacted us to determine if it can or should be performed on the product. For technical questions please call **1-218-943-6290**.

INTENDED USE

TECHNICAL SPECIFICATIONS

Supply voltage:	110V-60Hz
Motor input power:	125 Watt
Maximum speed:	5800R/min
Weight:	4.85 lbs.
Product No.:	CS-MBCJR
Max. chain pitch:	3/8 in.



WARNING: Read and understand all instructions. Failure to follow all instructions listed below may result in serious injury.



CAUTION: Do not allow persons to operate or assemble this electric sharpener until they have read this manual and have developed a thorough understanding of how the electric sharpener for chainsaws works.



WARNING: The warnings, cautions, and instructions discussed in this instruction manual cannot cover all possible conditions or situations that could occur. It must be understood by the operator that common sense and caution are factors which cannot be built into this product, but must be supplied by the operator.

SAVE THESE INSTRUCTIONS



GENERAL WARNINGS

GROUNDING INSTRUCTIONS

1. All grounded, cord-connected tools:

- This electric sharpener is equipped with an electric cord having an equipment-grounding conductor and a grounding plug. The plug must be plugged into a matching outlet that is

properly installed and grounded in accordance with all local codes and ordinances. Grounding provides a path of least resistance for electric current to reduce the risk of electric shock in the event of a malfunction or breakdown.

- **DO NOT modify the plug provided.** If it does not fit the outlet, have the proper outlet installed by a qualified electrician.

- Risk of electric shock will result from an improper connection of the equipment-grounding conductor. The conductor with insulation is the equipment-grounding conductor. If repair or replacement of the electric cord or plug is necessary, do not connect the equipment-grounding conductor to a live terminal.

- If grounding instructions are not completely understood, or if in doubt as to whether the electric sharpener is properly grounded, consult with a qualified electrician or service personnel.

- **ONLY** use 3-wire extension cords that have 3-prong grounding plugs and 3-pole receptacles that accept the electric sharpener's plug.

2. Grounded, cord-connected tools intend for use on a supply circuit having a nominal rating less than 150 V:

- This electric sharpener is intended for use on a circuit that has a 3-pole, grounded outlet. A temporary adapter may be used to connect this plug to a 2-pole receptacle if a properly grounded outlet is not available. The temporary adapter should be used only until a properly grounded outlet can be installed by a qualified electrician.

GENERAL SAFETY WARNINGS

- KEEP GUARDS IN PLACE and in working order.
- REMOVE ADJUSTING KEYS AND WRENCHES. Form a habit of checking that keys and adjusting wrenches are removed from the electric sharpener before turning it on.
- KEEP WORK AREA CLEAN. Cluttered areas and benches invite accidents. Keep work area well lighted.
- DO NOT USE IN DANGEROUS ENVIRONMENT. Don't use power tools in damp or wet locations.
- KEEP CHILDREN AWAY. All by-standers should be kept at a safe distance from the work area.
- DO NOT FORCE THE ELECTRIC SHARPENER. This tool will perform its job better and safer at the rate for which it was designed.
- USE RIGHT TOOL. Do not use the electric sharpener to do a job for which it was not designed.
- USE PROPER EXTENSION CORD. Ensure that your extension cord is in good condition, and that it is heavy enough to carry the current the electric sharpener will draw.
- WEAR APPROPRIATE APPAREL. Do not wear loose clothing, gloves, neckties, rings, bracelets, or other jewelry. These may get caught in moving parts. Nonslip footwear is also recommended. Protective hair covering should be worn to contain long hair.
- ALWAYS USE SAFETY GLASSES. Also use face or dust mask if cutting operation is dusty.
- SECURE WORK. Use clamps or a vise to hold work when practical. This frees both hands to operate the electric sharpener.
- DO NOT OVERREACH. Keep proper footing and balance at all times.
- MAINTAIN ELECTRIC SHARPENER WITH CARE. Keep all parts operating and clean for best and safest performance. Follow instructions for lubricating and changing accessories.

- DISCONNECT TOOLS FROM POWER SUPPLY before servicing and when changing accessories, such as blades, bits, cutters, and the like.
- REDUCE THE RISK OF UNINTENTIONAL STARTING. Ensure that the switch is off before plugging into power source.
- USE RECOMMENDED ACCESSORIES. Consult the owner's manual for recommended accessories. Use of improper accessories may cause risk of injury to persons.
- NEVER STAND ON ELECTRIC SHARPENER. Serious injury may result if the tool is tipped or if the cutting tool is unintentionally contacted.
- CHECK DAMAGED PARTS before further use of the electric sharpener. Check for alignment of moving parts, binding of moving parts, breakage of parts, mounting, and any other conditions that may affect its operation. A guard or other part that is damaged should be properly repaired or replaced. **DO NOT USE A MACHINE WITH A DEFECTIVE ON/OFF SWITCH.**
- DIRECTION OF FEED. Only feed work into the blade against the direction of rotation of the blade.
- NEVER LEAVE TOOL RUNNING OR UNATTENDED. Turn the power off and do not leave the electric sharpener until it comes to a complete stop.



CHAINSAW SHARPENER WARNINGS

Before operation of the electric sharpener, read the instruction manual carefully. If you have any questions regarding the condition and operation of the tool, consult the manufacturer.

Protect the electric sharpener from moisture, rain, and dust. This tool is only for indoor use.

For the highest degree of safety, carefully read the following instructions:

- Use the electric sharpener only for its intended use.
- Never start the sharpener without the wheel guard in place.
- Never use the sharpener as a cutter for grinding objects other than chainsaws.
- The sharpener can be used continuously for no more than **15 minutes**; then, turn it off for an adequate period of time.
- ALWAYS wear hearing and eye protection at all times. Wear a dust protection mask when needed. The noise level in the work area can be above 85dB, and eyes can be protected from flying chips and debris with safety goggles.
- Wear work gloves to protect fingers and hands from cutting injuries.
- Unplug the electric sharpener before doing any maintenance work on the machine.
- Ensure that the chain is sharpened and secured in place so that it doesn't slip out.
- Keep the electric sharpener clean and check for any damage.
- ONLY use soap and water to clean plastic parts.
- Do not use the electric sharpener near any flammable liquids or vapors.
- Protect the power cord from damage by oil or acid.
- IMPORTANT: Observe all national safety regulations regarding installation, operation, and maintenance.
- After completing a job, unplug the electric sharpener from its power source.
- Store the machine in a safe, dry, locked location out of the reach of children.
- Always use both hands to hold the machine when working. Maintain safe footing and good posture.
- Inspect sharpening wheels before each use.

- ALWAYS replace a cracked wheel immediately.
- Always use guards and eye shields at all times.
- Do not over tighten wheel nut.
- Protect yourself from electric shock. Avoid any bodily contact with grounded objects such as pipes, radiators, stoves, and refrigerators.
- Do not overload the machine – work in a safe manner within the scope of the machine's capacity.
- Do not use the power cord for carrying or hanging the machine. Do not use the cord to pull out the plug from the outlet.
- Check the machine cord regularly; when it is damaged, have it replaced by a skilled electrician. Check the extension cords as well and replace them if damaged.
- Be attentive. Start a job only when you feel good. Never use the electric sharpener when distracted by others.



CAUTION: Abide by the essential safety measures protecting you from electric shock, accident, and fire. Read all instructions before using the electric sharpener for chainsaws and follow them. Keep this manual in a safe place for future reference.

NOTE: This machine is in compliance with any respective safety provisions. Any repairs should be done by professionally qualified technicians and only genuine spare parts should be used. If these provisions are not observed, the user is in risk of injury.

READ ALL WARNINGS BEFORE OPERATION

ASSEMBLY:



ATTENTION: The sharpener should only be used in a place protected from dust and dampness, well-lighted, away from children, gases, or other flammable or explosive liquids. It should be placed near a suitable earthed outlet, and do not use dangerous extension cables.

1. Fasten the sharpener onto the bench with two M8 bolts (not provided) after having carefully positioned it on the bench.
2. When the sharpener is fastened onto the bench, use a suitable square support, making sure that the sharpener is not fastened at the level of the operator's eyes. It is recommended that you install the sharpener at a maximum height of 47"-51" from ground level.
3. Slide the head of the M6x25 screw onto the sharpener as shown below, then attach handle to M6x25 screw. Make certain the head of the M6x25 screw is at the end of its slot, if not, the wheel guard cannot be installed.



4. After installing the sharpener properly, assemble the wheel.

PRE-OPERATION:

Fasten the sharpener onto a work bench or any work surface where carefully positioned to be clear from any other tools or distractions.

GRINDING WHEEL CHECK

Check the wheel you are about to use for damages prior to installation. To avoid injuries and accidents, only use grinding wheels that are free of defects.

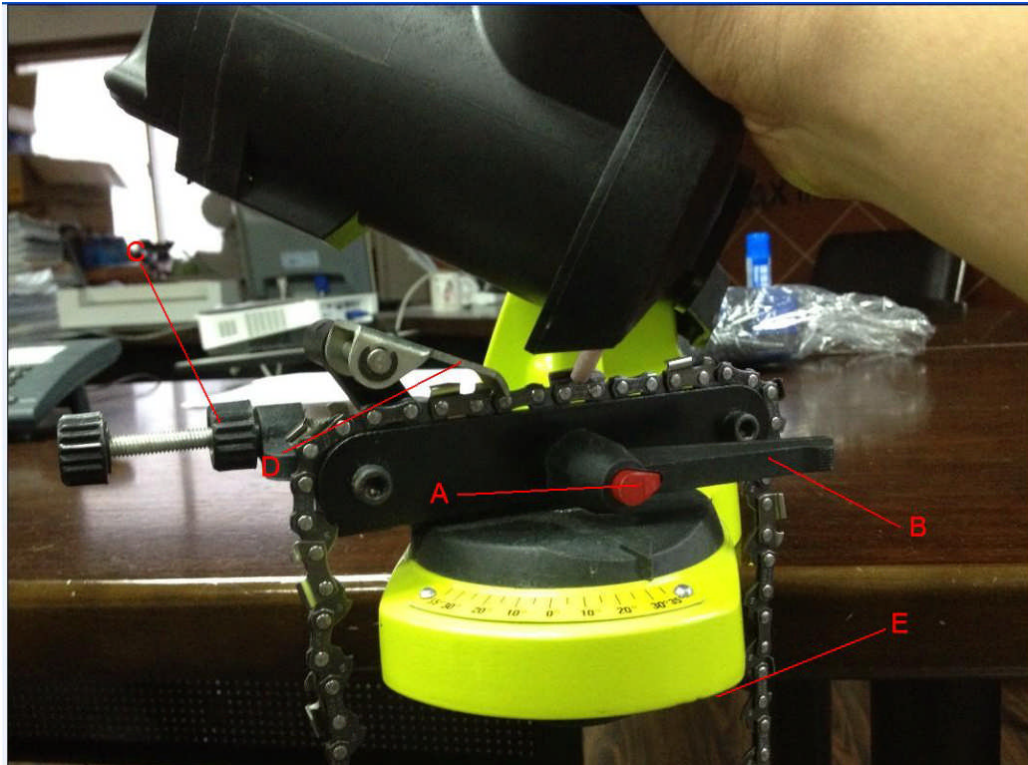
1. Insert a pencil horizontally through the hole and allow the wheel to swing freely.
2. Carefully tap the wheel edge with another pencil. This wheel should give a clear, high pitch sound. If the sound is dampened or blank, the wheel is defective and should not be used.
3. Do not force the grinding wheel onto the hub.
4. The central bore diameter should not be changed.
5. Only use grinding wheels designed for this sharpener.
6. The smallest grinding wheel diameter should not be less than 4".
7. Any adjustments should not be done unless the machine is switched off and unplugged.

A dull or dampened sound indicates damage by cracks in the wheel. NO DAMAGED WHEELS SHOULD EVER BE USED!

GRINDING WHEEL ASSEMBLY

1. To avoid damage to the wheel, **Do not over tighten screws.**
2. The grinding wheel guard should be tightened securely.
3. After installing the wheel, run the machine to ensure that the wheel is not vibrating or spinning incorrectly. If it is, quickly turn off the machine and unplug the power cord before attempting to correct the default.
*The machine has a zero voltage circuit breaker which is disabled during an outage and will prevent any unexpected restarting of the machine after the power supply is restored.
4. Using the sharpening stone and shape the wheel to obtain the required profile. Always be careful while working.

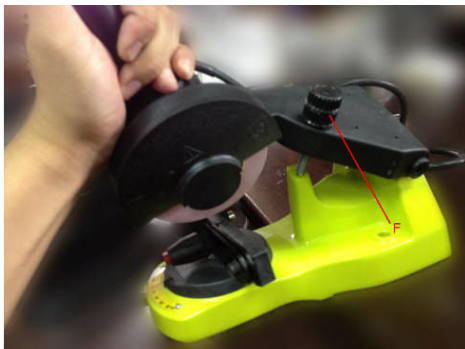
CLAMPING THE SCREW SET UP



1. Before grinding begins, the chain should be secured between the guides. The tooth to be sharpened first should be placed against the stop. Watch that the sharpening angle corresponds to the guide position.
2. Set the guides to the chain width using the set screw (A) so that it is firmly fixed in the clamp screw by rotating the lever control. (B)
3. Set the backstop by adjusting the set screw.(D)
4. Set the top plate angle by adjusting the set screw corresponding to the readout scale. The top angle should be set up by adjusting the set screw. (E)

OPERATION :

1. With all adjustments set, lower the grinding wheel to the tooth. The grinding depth may be set by set screw (F).



2. With lever control loose (B), adjust the set screw until the grinding wheel touches the tooth. During the procedure, pull the chain through the guide (C) carefully.



CAUTION: Always wear gloves and use caution while performing this task.

- The machine may now be switched on and the chain sharpening may begin by gently touching the wheel on the chain. Adjust the pressure as necessary.
- Mark the start of sharpening (with a piece of chalk) and sharpen all the teeth in one direction, then turn the clamping screw and sharpen the teeth in the opposite direction.
- With worn chains, the lateral guide position should be set so the grinding wheel doesn't touch the guide.

NOTE: Do not use a lot of pressure when sharpening the teeth or run the grinding wheel on the teeth for too long as the chain can be damaged.

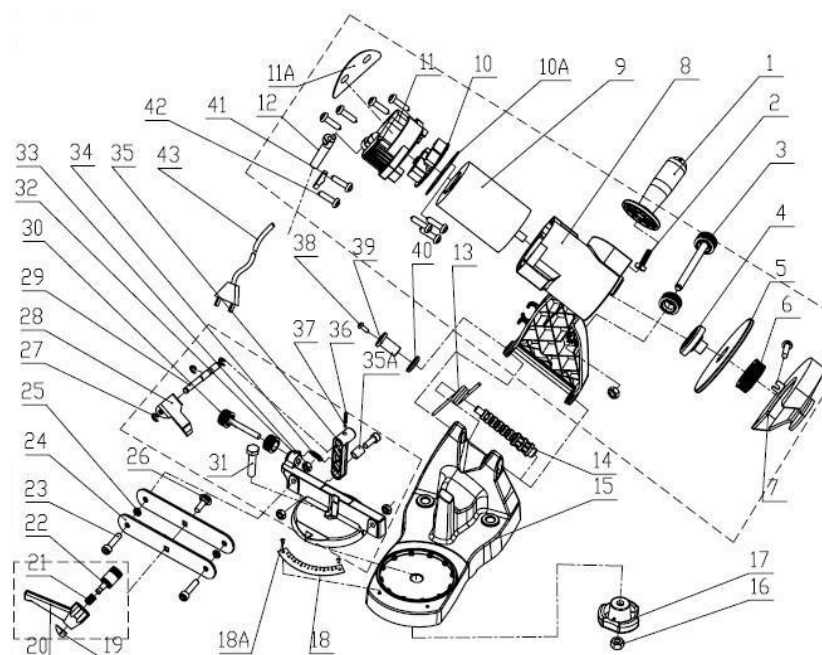
- Sharpen all depth gauges:

Chain Pitch	Gauge	OREGON	STIHL	SANDVIK	CARLTON	Vise Angle	Top Plate Angle	Tilt Angle	Wheel Width	Depth Gauge
1/4"	0,050"/1,3mm	25AP	13RM	50K		30°	60°	10°	1/8" / 3,2mm	0,025" / 0,63mm
0,325"	0,050"/1,3mm	20LP	23RS	50JLG	K1L	25°	60°	10°	1/8" / 3,2mm	0,025" / 0,63mm
0,325"	0,058"/1,5mm	21LP	25RS	58JLG	K2L	25°	60°	10°	1/8" / 3,2mm	0,025" / 0,63mm
0,325"	0,063"/1,6mm	22LP	26RS	63JLG	K3L	25°	60°	10°	1/8" / 3,2mm	0,025" / 0,63mm
0,325"	0,050"/1,3mm	20BP	23RM	50J	K1C	30°	60°	10°	1/8" / 3,2mm	0,025" / 0,63mm
0,325"	0,058"/1,5mm	21BP	25RM	58J	K2C	30°	60°	10°	1/8" / 3,2mm	0,025" / 0,63mm
0,325"	0,063"/1,6mm	22BP	26RM	63J	K3C	30°	60°	10°	1/8" / 3,2mm	0,025" / 0,63mm
0,325"	0,050"/1,3mm	95VP			K1N	30°	60°	10°	1/8" / 3,2mm	0,025" / 0,63mm
0,325"	0,050"/1,3mm	95R				5°	50°	10°	1/8" / 3,2mm	0,030" / 0,76mm
0,325"	0,058"/1,5mm	M21LP				25°	60°	10°	1/8" / 3,2mm	0,025" / 0,63mm
0,325"	0,063"/1,6mm	M22LP				25°	60°	10°	1/8" / 3,2mm	0,025" / 0,63mm
3/8"	0,050"/1,3mm	72LG	33RS	50AL	A1LM	25°	60°	10°	1/8" / 3,2mm - 3/16" / 4,7mm	0,025" / 0,63mm
3/8"	0,058"/1,5mm	73LG	35RS	58AL	A2LM	25°	60°	10°	1/8" / 3,2mm - 3/16" / 4,7mm	0,025" / 0,63mm
3/8"	0,063"/1,6mm	75LG	36RS	63AL	A3LM	25°	60°	10°	1/8" / 3,2mm - 3/16" / 4,7mm	0,025" / 0,63mm
3/8"	0,050"/1,3mm	72LP	33RS	50ALG	A1L	25°	60°	10°	1/8" / 3,2mm - 3/16" / 4,7mm	0,025" / 0,63mm
3/8"	0,058"/1,5mm	73LP	35RS	58ALG	A2L	25°	60°	10°	1/8" / 3,2mm - 3/16" / 4,7mm	0,025" / 0,63mm
3/8"	0,063"/1,6mm	75LP	36RS	63ALG	A3L	25°	60°	10°	1/8" / 3,2mm - 3/16" / 4,7mm	0,025" / 0,63mm
3/8"	0,050"/1,3mm	72DP	33RM1	50AG	A1EP	35°	60°	0°	1/8" / 3,2mm - 3/16" / 4,7mm	0,025" / 0,63mm
3/8"	0,058"/1,5mm	73DP		58AG	A2EP	35°	60°	0°	1/8" / 3,2mm - 3/16" / 4,7mm	0,025" / 0,63mm
3/8"	0,063"/1,6mm	75DP	36RM1	63AG	A3EP	35°	60°	0°	1/8" / 3,2mm - 3/16" / 4,7mm	0,025" / 0,63mm
3/8"	0,050"/1,3mm	72RD				10°-15°	50°	10°	1/8" / 3,2mm - 3/16" / 4,7mm	0,025" / 0,63mm
3/8"	0,058"/1,5mm	73RD				10°-15°	50°	10°	1/8" / 3,2mm - 3/16" / 4,7mm	0,025" / 0,63mm
3/8"	0,063"/1,6mm	75RD	36RMX			10°-15°	50°	10°	1/8" / 3,2mm - 3/16" / 4,7mm	0,025" / 0,63mm
3/8"	0,058"/1,5mm	M73LP				25°	60°	10°	1/8" / 3,2mm - 3/16" / 4,7mm	0,025" / 0,63mm
3/8"	0,063"/1,6mm	M75LP				25°	60°	10°	1/8" / 3,2mm - 3/16" / 4,7mm	0,025" / 0,63mm
3/8(90)	0,043"/1,1mm	90SG	63PMN		N4C	30°	50°	0°	1/8" / 3,2mm - 3/16" / 4,7mm	0,020" / 0,50mm
3/8(91)	0,050"/1,3mm	91VS	63PM	50R	N1C	30°	60°	0°	1/8" / 3,2mm - 3/16" / 4,7mm	0,025" / 0,63mm
3/8(91)	0,050"/1,3mm	91VG	63PM1	50RG	N1C-BL	30°	60°	0°	1/8" / 3,2mm - 3/16" / 4,7mm	0,025" / 0,63mm
3/8(91)	0,050"/1,3mm	91R	63PMX			5°	60°	0°	1/8" / 3,2mm - 3/16" / 4,7mm	0,025" / 0,63mm
0,404"	0,058"/1,5mm	58L				25°	60°	10°	3/16" / 4,7mm	0,025" / 0,63mm
0,404"	0,063"/1,6mm	59L			B2LM	25°	60°	10°	3/16" / 4,7mm	0,025" / 0,63mm
0,404"	0,058"/1,5mm	26/P		58B	B2EP	35°	60°	10°	3/16" / 4,7mm	0,030" / 0,76mm
0,404"	0,063"/1,6mm	27/P	46RSF	63B	B3EP	35°	60°	10°	3/16" / 4,7mm	0,030" / 0,76mm
0,404"	0,063"/1,6mm	59AC	46RM	63BC	B3S	35°	60°	0°	3/16" / 4,7mm	0,030" / 0,76mm
0,404"	0,063"/1,6mm	27R	46RMX	63BR	B3RM10	10°-15°	50°	10°	3/16" / 4,7mm	0,030" / 0,76mm
0,404"	0,063"/1,6mm	16H	46RMH	HC	B3M	35°	60°	10°	3/16" / 4,7mm	0,050" / 1,27mm
0,404"	0,080"/2,0mm	18H	49RMH	2HC	B5M	35°	60°	10°	3/16" / 4,7mm	0,050" / 1,27mm
3/4"	0,122"/3,1mm	11H			G7S	35°	60°	10°	1/4" / 6mm	0,070" / 1,77mm

MAINTENANCE

Maintain your electric sharpener for chainsaws. It is recommended that the general condition of the electric sharpener be examined before each use. Always disconnect the plug from the socket before carrying out any maintenance, lubrication, or cleaning operations. The sharpener must be kept clean, in order to make safety instructions and plates clearly legible. Clean it using a rag or a swab. Do not use compressed air which is likely to bring the metal dust in positions where they cannot be reached. This would damage essential components of the sharpener.

DIAGRAM & PARTS LIST



For replacement parts and technical questions, please call **1-218-943-6290**.

Part No.	Description	Qty		Part No.	Description	Qty
1	Handle	1		22	Intermediate shaft	1
2	Coach bolt M6*20	1		23	Screw M6 x 22	3
3	Adjustment screw M8*80	1		24	Clip chain plate	2
4	Arbor flange	1		25	Spacer bush	2
5	Grinding wheel	1		26	Step bolt	1
6	Grinding wheel platen	1		27	Ring M5	3
7	Wheel cover	1		28	Limit board	1
8	Top Bracket	1		29	Limit lever	1
9	120V 80W DC machine	1		30	Adjustment screw M8 x 60	1
10	Circuit Board	1		31	Bolt M8 x 25	1
10A	Motor distance piece	1		32	Top turntable	1
11	Switch cover	1		33	Nut M6	3
11A	Label	1		34	Limit frame tension spring	11
12	Wire sheath	1		35	Limit frame	1
13	Torsional spring	1		35A	Limit frame spacer bush	1
14	Middle bearing	1		36	Limit frame pressure spring	1
15	Bottom base	1		37	Steel ball	1
16	M8 nut	2		38	Screw M4 x 12	1
17	M8 hand wheel	1		39	Middle bearing Long sleeve	1
18	Angle labeling	1		40	Middle bearing short sleeve	1
18A	Rivet	2		41	Wire clamp	1
19	Unlock button	1		42	Screw M3 x 10	10
20	Wrench	1		43	Plug	1
21	Compressed spring	1				

WARRANTY

One-year limited warranty



BAC

PO BOX 155

Miltona, MN 56354

Made in CHINA