



Assembly Instructions Fas-Lok Coupler Repair Kits, Class I and II

IMPORTANT! Read, understand and follow these instructions.

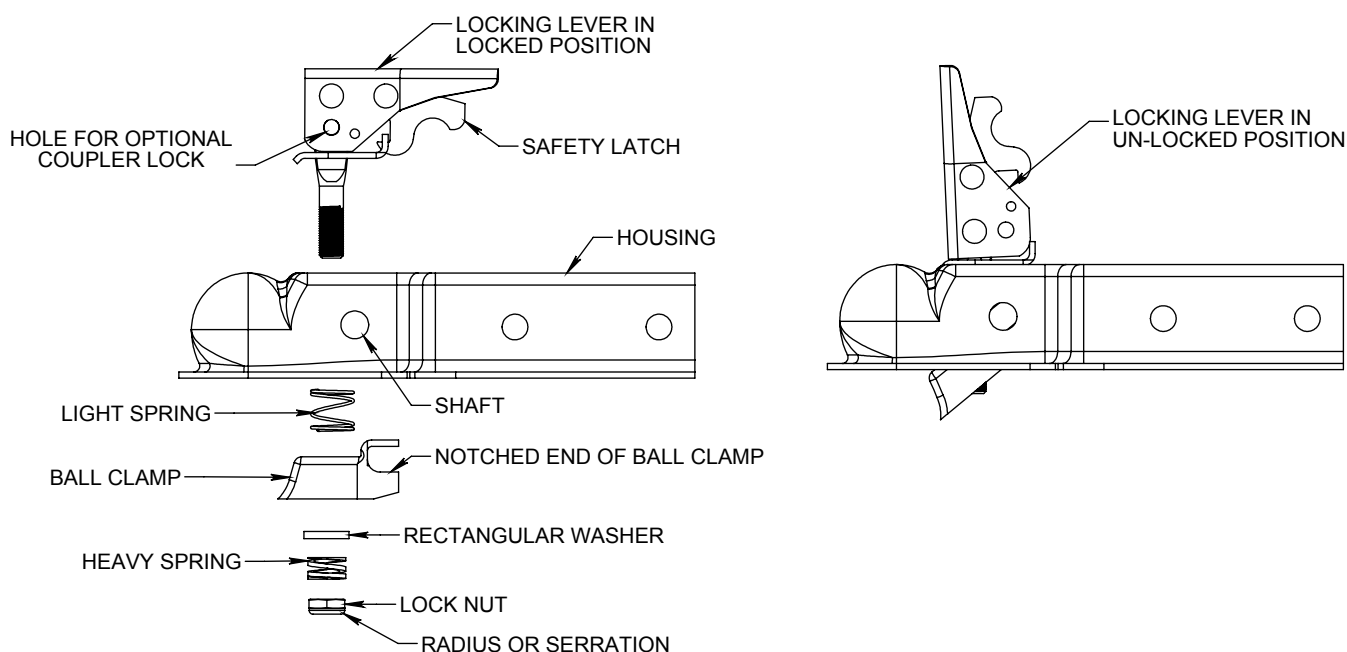
This repair kit is designed for use with Cequent Consumer Products couplers and may not be compatible with couplers from other manufacturers.

WARNING: Compare parts carefully to ensure they are identical to original parts and operate properly before using.

DANGER: Failure to use correct coupler parts, correctly assemble coupler or properly use coupler can result in serious injury or death.

If you have any questions regarding the proper assembly or use of this kit, call the:

Cequent Consumer Products Help Hotline: 1-800-234-6992



1. Assemble coupling mechanism as shown with locking lever in locked position.

- A. Notched end of ball clamp pivots on shaft.
- B. Light spring is above ball clamp and heavy spring is below ball clamp and rectangular washer.
- C. Assemble lock nut with radius or serration away from heavy spring. Lock nut will be hard to turn - do not lubricate lock nut.

2. Move locking lever to the unlocked position.

3. Insert ball ($\text{Ø}1\text{-}7/8$ " for Class I and $\text{Ø}2$ " for Class II) in coupling socket and push locking lever to locked position.

4. Tighten lock nut as far as possible - you should not be able to lift the locking lever at this point. Now back off lock nut 1/2 turn at a time until you are able to lift locking lever.

WARNING At least 1-1/2 full threads of the locking bolt must be exposed beyond the lock nut after this adjustment.

5. Hole in locking lever is for coupler lock, if desired.

6. To maintain a proper fit of the ball in the coupling, it is necessary at regular intervals to check and slightly tighten the lock nut as needed. To do this repeat step 4.

7. Periodically lubricate all moving parts. Do not lubricate lock nut.

8. Use hitch ball lube on hitch ball to eliminate friction and reduce wear on hitch ball and coupler.

Cequent Consumer Products, Inc.
29000-2 Aurora Rd.
Solon, OH 44139

Help Hotline: 1-800-234-6992
www.cequent-cpi.com