



Powerful CREE Tactical Flashlight User Manual



⚠ WARNING: Read and understand all instructions, warnings, and cautions before using this product. Failure to follow the instructions, warnings, and cautions may result in serious personal injury and/or property damage.

Item # 20013

SAVE THESE INSTRUCTIONS

Save the receipt and these instructions. It is important that you read the entire manual to become familiar with this product before you begin using it.

This product is designed for certain applications only. The distributor cannot be responsible for issues arising from modification. We strongly recommend this machine not be modified and/or used for any application other than that for which it was designed. If you have any questions relative to a particular application, DO NOT use the product until you have first contacted the distributor to determine if it can or should be performed on the product.

For technical questions please call **1-800-588-0590**.

GENERAL SAFETY RULES



WARNING:

Read carefully and understand all **ASSEMBLY AND OPERATION INSTRUCTIONS** before operating. Failure to follow the safety rules and other basic safety precautions may result in serious personal injury.



CAUTION: Do not allow persons to operate or assemble this product until they have read this manual and have developed a thorough understanding of how the product works.



WARNING: The warnings, cautions, and instructions discussed in this instruction manual cannot cover all possible conditions or situations that could occur. It must be understood by the operator that common sense and caution are factors which cannot be built into this product, but must be supplied by the operator.

SAVE THESE INSTRUCTIONS

FEATURES

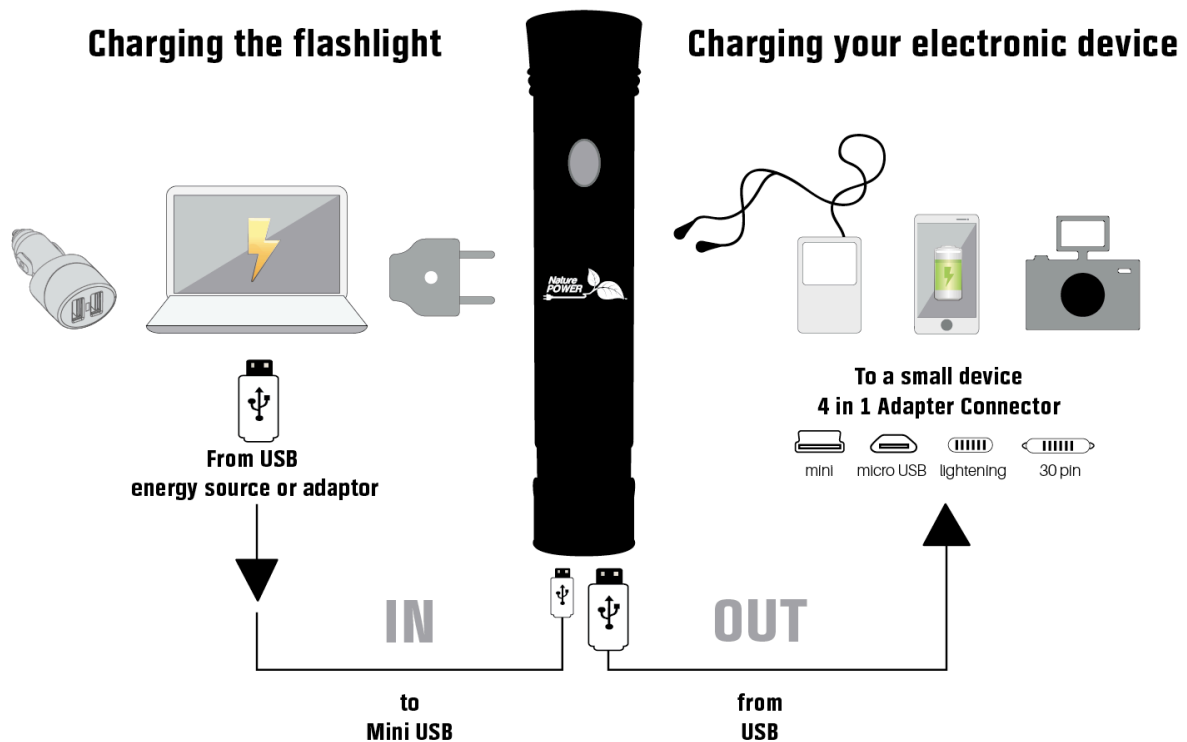
- **3W CREE LED**
- **110 Lumens**
- **1 Micro USB and 1 USB Port**
- **Shock resistant rubberized material**
- **8 Hours on a full charge**
- **Water resistant**

PARTS LIST

Part#	Description	Qty.
1	Powerful CREE 3 watt tactical flashlight unit	1
2	4 in 1 USB Connector	1
3	Micro-USB to USB-C adapter	1

USE AND CARE

- **Do not modify the product in any way.** Unauthorized modification may impair the function and/or safety and could affect the life of the equipment. There are specific applications for which the **product** was designed.
- **Always check of damaged or worn out parts before using the product.** Broken parts will affect the **product** operation. Replace or repair damaged or worn parts immediately.
- **Store idle product.** When **product** is not in use, store it in a secure place out of the reach of children. Inspect it for good working condition prior to storage and before re-use.



Charging the Flashlight

When charging your flashlight, use Mini USB port to connect to USB cable, then connect to any USB power source such as AC adaptor, laptop, or computer to charge device.

A red light blinks while charging, it will stop blinking when fully charged.

Charging your Electronic Device

Plug the large end of the USB cable into the flashlight (output). Then plug the small end of your 4 in 1 cable that fits into your device.

The mobile battery automatically begins charging your device and the LED turns blue.

MAINTENANCE

Maintain your product. It is recommended that the general condition of any **product** be examined before it is used.

LIMITED WARRANTY

Nature Power warrants our products to the original purchaser that this product is free from defects in materials and workmanship for the period of 1 year from date of purchase. In the case of product defect, contact Nature Power customer service to receive troubleshooting. If defective part or unit should be returned, a Return Authorization Number must be issued by Nature Power and the defective part or unit should be returned to the authorized location at the purchasers' expense. A dated proof of purchase is required to receive warranty service. Once received at authorized location and defect proves to be the result of defective material and workmanship, the defective part or unit will be replaced at warrantors' option and returned to the original purchaser at warrantors' expense. No refunds will be granted by the warrantor, in the event of buyer's remorse please contact your point of purchase within and in adherence to their return policy. Refunds are granted at the retailers' discretions.

Dated Proof of Purchase is required.



Please contact Nature Power Products to acquire more information:

1-800-588-0590

info@naturepowerproducts.com

www.naturepowerproducts.com