

IMPORTANT EXCHANGE RULES!

NON-THOROUGHbred CYLINDER EXCHANGE FEE:

All #3 and larger non-Thoroughbred cylinders surrendered for exchange are subject to a one time fee.

DEFECT FREE:

Customer Owned Non Thoroughbred cylinders being offered for exchange must be free of defects and in good working order to be exchanged. Images below are examples of unacceptable cylinders that cannot be traded into the program under any circumstances even when charged the \$19.00 Non Thoroughbred Exchange Fee!

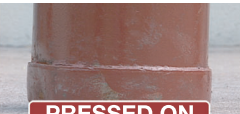
UNACCEPTABLE EXCHANGE CYLINDERS DEFECTS



ARC BURN  
DEFECT



GOUGE  
DEFECT



PRESSED ON  
FOOT RING  
DEFECT




PITTING  
DEFECT



DENT  
DEFECT



DENT - CLOSE UP  
DEFECT



**SIZE 3 CART**  
Holds a #3 Oxygen and a #3 Acetylene. Features 6" wheels, chain and tool tray.  
**Part # TBCRT3**



**SIZE 4 CART**  
Holds a #4 Oxygen and a #4 Acetylene. Features 8" wheels, chain and tool tray.  
**Part # TBCRT4**

*Note: Size 1 and Size 2 Cylinder Cart are also available*

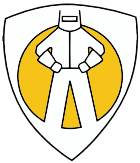
OWNERSHIP ACKNOWLEDGEMENT:

CUSTOMER ACKNOWLEDGES OWNERSHIP OF TRADE IN CYLINDER TO PARTICIPATE IN EXCHANGE. LEASED OR RENTED CYLINDERS WILL NOT BE ACCEPTED. THOROUGHbred DOES NOT ACCEPT NON-THOROUGHbred SIZE 4 (ACETYLENE), SIZE 5 (OXYGEN) AND SIZE 6 (ARGON AND ARGON/CO2 MIX) CYLINDERS FOR EXCHANGE. ONLY CUSTOMER OWNED CYLINDERS WILL BE EXCHANGED.

AVAILABLE NOW



Complete line of abrasives for:  
Cutting • Grinding • Finishing • Polishing



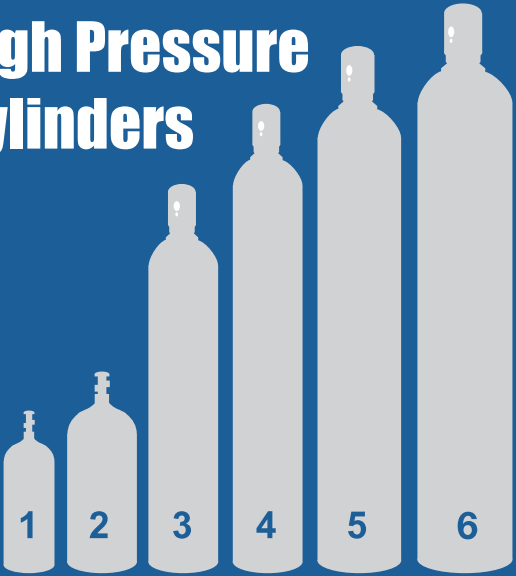
**TILLMAN™**  
The Brand Pros Demand

PROFESSIONAL GRADE PPE

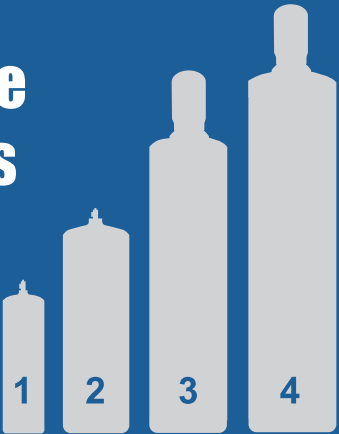
- Welding Gloves
- TIG Gloves
- MIG Gloves
- TrueFit Performance Gloves
- Drivers Gloves
- Winter Gloves
- Leather Work Gloves
- Cotton, Jersey, String Knit Gloves
- Coated Gloves
- Cut Resistant Gloves
- High Heat Gloves
- Back Hand Pads
- Welding Accessories
- Onyx Jackets
- Leather Jackets & Cape Sleeves
- Leather Aprons
- Leather Sleeves, Overalls
- Medium Weight Protective Clothing
- Lightweight Protective Clothing
- Aluminized Protective Clothing
- Welding Blankets, Roll Goods



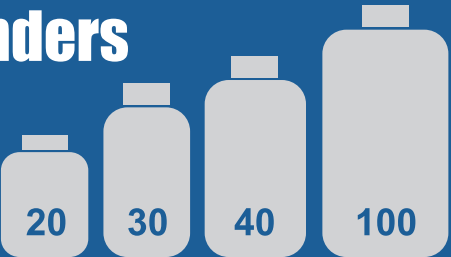
High Pressure  
Cylinders



Acetylene  
Cylinders



Propane  
Cylinders



© 2018 Thoroughbred Industrial Cylinder Exchange, LLC

**THOROUGHbred®**  
INDUSTRIAL CYLINDER EXCHANGE®  
an American Welding & Gas Company

21116



**877-GAS-PONY**  
[www.gaspony.com](http://www.gaspony.com)



**WELDING GAS TO GO!®**



# ACETYLENE

SIZE	SIZE 1	SIZE 2	SIZE 3	SIZE 4
CAPACITY	(MC)10cu.ft.	(B)40cu.ft.	75cu.ft.	145cu.ft.
HEIGHT	HT 15"	HT 23"	HT 31"	HT 40"
DIAMETER	DIA 4"	DIA 6"	DIA 7"	DIA 8"
WEIGHT	8.5 LBS	25.5 LBS	49.5 LBS	79 LBS

# OXYGEN

FOR INDUSTRIAL USE ONLY

SIZE	SIZE 1	SIZE 2	SIZE 3	SIZE 4	SIZE 5
CAPACITY	20cu.ft.	40cu.ft.	80cu.ft.	125cu.ft.	251cu.ft.
HEIGHT	HT 14"	HT 17"	HT 32"	HT 43"	HT 51"
DIAMETER	DIA 5"	DIA 7"	DIA 6.6"	DIA 6.6"	DIA 9.1"
WEIGHT	13 LBS	25 LBS	53 LBS	79 LBS	114 LBS

# SHIELDING GAS

75/25 ARGON CO2 MIX FOR WIRE WELDING

SIZE	SIZE 1	SIZE 2	SIZE 3	SIZE 4	SIZE 6
CAPACITY	20cu.ft.	40cu.ft.	80cu.ft.	125cu.ft.	390cu.ft.
HEIGHT	HT 14"	HT 17"	HT 32"	HT 43"	HT 55"
DIAMETER	DIA 5"	DIA 7"	DIA 6.6"	DIA 6.6"	DIA 9.25"
WEIGHT	13 LBS	25 LBS	53 LBS	79 LBS	143 LBS

# NITROGEN

SIZE	SIZE 1	SIZE 2	SIZE 3	SIZE 4
CAPACITY	20cu.ft.	40cu.ft.	80cu.ft.	125cu.ft.
HEIGHT	HT 14"	HT 17"	HT 32"	HT 43"
DIAMETER	DIA 5"	DIA 7"	DIA 6.6"	DIA 6.6"
WEIGHT	13 LBS	25 LBS	53 LBS	79 LBS

## REPLACEMENT CYLINDER CAPS

**Note:** All cylinders with a threaded neckring are required to have cylinder caps in place when being stored full or empty.



Part #TBCA-20



Part #TBCH-40

**HIGH PRESSURE CYLINDER CAP**  
Fits sizes 2 and above Argon/CO2, Argon, CO2, Helium(size 4 and above), Nitrogen and Oxygen cylinders

# ARGON

SIZE	SIZE 1	SIZE 2	SIZE 3	SIZE 4	SIZE 6
CAPACITY	20cu.ft.	40cu.ft.	80cu.ft.	125cu.ft.	330cu.ft.
HEIGHT	HT 14"	HT 17"	HT 32"	HT 43"	HT 55"
DIAMETER	DIA 5"	DIA 7"	DIA 6.6"	DIA 6.6"	DIA 9.25"
WEIGHT	13 LBS	25 LBS	53 LBS	79 LBS	143 LBS

# CO2

## CARBON DIOXIDE

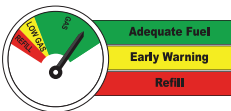
SIZE	SIZE 2	SIZE 5
CAPACITY	20LBS	*50LBS
HEIGHT	HT 14"	HT 51"
DIAMETER	DIA 5"	DIA 9.1"
WEIGHT	47 LBS	164 LBS

\*50LBS CO2 cylinders are available with a siphon tube

# PROPANE

SIZE	SIZE 1	SIZE 2	SIZE 3	SIZE 4
CAPACITY	20 LBS	30 LBS	40 LBS	100 LBS
HEIGHT	HT 18"	HT 24"	HT 30"	HT 47"
DIAMETER	DIA 11"	DIA 11"	DIA 11"	DIA 11"
WEIGHT	15 LBS	27 LBS	37 LBS	98 LBS

**GASPONY®Grill Saver** - Propane Level Indicator - Never run out again!



The easy-to-read indicator shows when your gas tank is low. Automatically limits flow of gas in the event of a leak or rupture. Easy to install with no tools required.

# GASPONY®

## Products

**GASPONY®1** - Complete Torch Outfit w/ Cylinders  
- (#1) Size (MC)10 cf Acetylene / (#1) 20 cf Oxygen  
- Medium Duty Torch Outfit, Portable Cylinder Tote



**POWERTORCH®250** - Oxy-Acetylene Torch Outfit. - Includes Cutting Attachment, Welding Torch w/ check valves, Welding Tip, Cutting Tip, Multi-Flame Heating Nozzle, Oxygen Regulator, Acetylene Regulator, Hose, Safety Goggles, Flint Lighter & Tip Cleaner.



**GASPONY®3** - Complete Torch Outfit w/ Cylinders  
- (#3) 75 cf Acetylene / (#3) 80 cf Oxygen  
- Victor Torch Outfit, American Made Cylinder Cart



**GASPONY®PowerFlame PRO** - Complete Heating Solution  
- Includes Size 20 Propane (Works with Size 20 or 30 Propane)  
- Push Button Auto Start Torch, American Made Cylinder Cart



**CONTACT US TODAY**  
for more information.

**1-877-GAS-PONY**  
[www.gaspony.com](http://www.gaspony.com)

