



Pet Screen Door

installation guide

protect. teach. love.®




Model Number
P1-ZB-11

PLEASE READ THIS ENTIRE GUIDE BEFORE BEGINNING

IMPORTANT SAFETY INFORMATION

Explanation of Attention Words and Symbols used in this guide

 This is the safety alert symbol. It is used to alert you to potential personal injury hazards. Obey all safety messages that follow this symbol to avoid possible injury or death.

⚠ WARNING **WARNING** indicates a hazardous situation which, if not avoided, could result in death or serious injury.

⚠ CAUTION **CAUTION**, used with the safety alert symbol, indicates a hazardous situation which, if not avoided, could result in minor or moderate injury.

NOTICE **NOTICE** is used to address safe use practices not related to personal injury.

⚠ WARNING

- When children are present in the home, it is important to consider the pet door during child proofing activities, the pet door may be misused by a child resulting in the child accessing potential hazards that may be on the other side of the pet door. Purchasers/Homeowners with swimming pools should ensure that the pet door is monitored at all times and that the swimming pool has adequate barriers to entry. If a new hazard is created inside or outside of your home, which may be accessed through the pet door, Radio Systems® Corporation recommends that you properly guard access to the hazard or remove the pet door. The closing panel or lock, if applicable, is provided for aesthetic and energy efficiency purposes and is not intended as a security device. Radio Systems Corporation will not be liable for unintended use and the purchaser of this product accepts full responsibility for oversight of the opening it creates.
- Power Tools. Risk of severe injury; follow all safety instructions for power tools. Be sure to always wear proper safety equipment.

⚠ CAUTION

- The user, prior to installation, must become familiar with all building codes that may affect the installation of the pet door and determine, along with a licensed contractor, its suitability in a given installation. This pet door is not a fire door. It is important for the owner and contractor to consider any risks that may be present inside or outside of the pet door, and any risks that may be created by subsequent changes to your property and how they may relate to the existence and use,
- If cutting a metal surface, be aware of sharp edges to prevent injury.

NOTICE

- Keep these instructions with important papers; be sure to transfer these instructions to the new owner of the property.
- If homeowner's door or other application is not level, the pet door must be marked level to swing properly.
- Make sure there is nothing underneath the door where you will be cutting out opening.

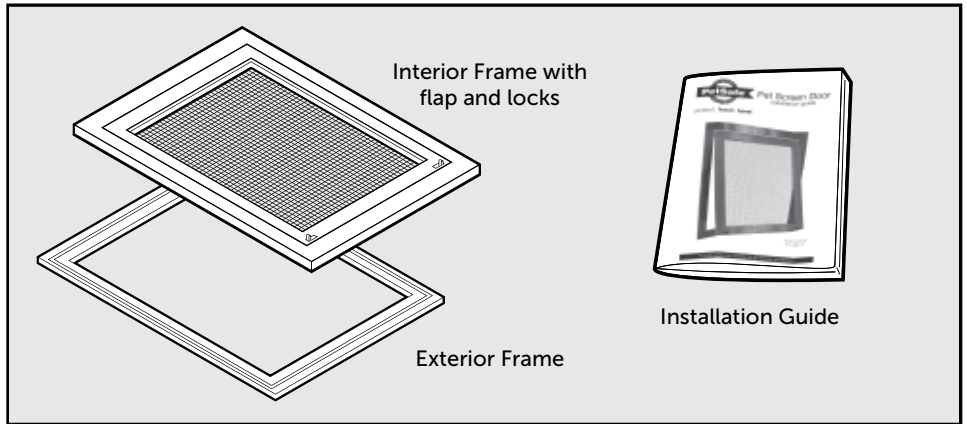
Thank you for choosing the PetSafe® Brand. You and your pet deserve a companionship that includes memorable moments and a shared understanding together. Our products and training tools enhance the relationship between pets and their owners. If you have any questions about our products or training your pet, please visit our website at www.petsafe.net or contact our Customer Care Center at 1-800-732-2677.

To get the most protection out of your warranty, please register your product within 30 days at www.petsafe.net. By registering and keeping your receipt, you will enjoy the product's full warranty and should you ever need to call the Customer Care Center, we will be able to help you faster. Most importantly, your valuable information will never be given or sold to anyone.

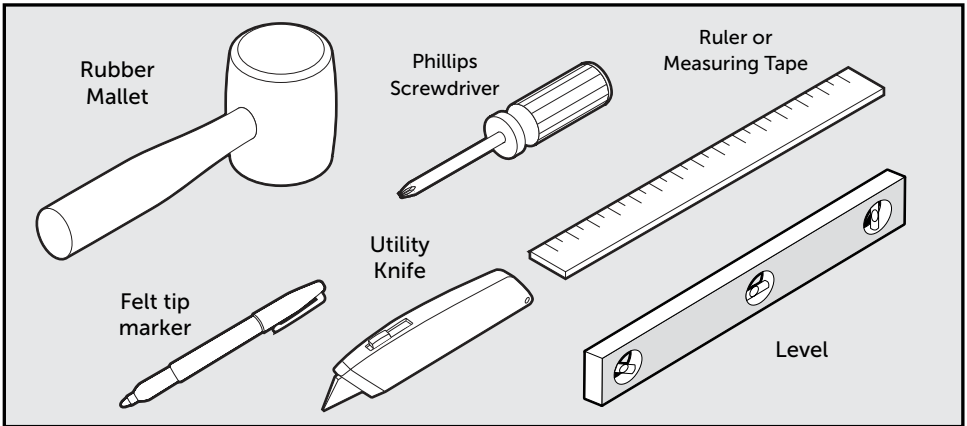
Table of Contents

Kit Includes.....	4
Tools Needed	4
Key Definitions	4
Installation in Screen Doors	5
Determine Pet Door Location.....	5
Prepare Door.....	5
Cut Pet Door Opening.....	6
Install the Pet Door.....	7
Train Your Pet.....	8
Pet Screen Door Locking System	8
Customer Care	9
Terms of Use and Limitation of Liability	9
Warranty	9

Kit Includes



Tools Needed



Key Definitions

Outer Frame Size: Overall pet door dimensions

Cut-Out Size: Dimensions of opening cut in homeowner's door for proper fit and pet door installation

Flap Opening Size: Usable flap size for pet to enter and exit through pet door

Interior Frame: Pet door frame with flap and locks

Exterior Frame: Pet door frame without flap or locks

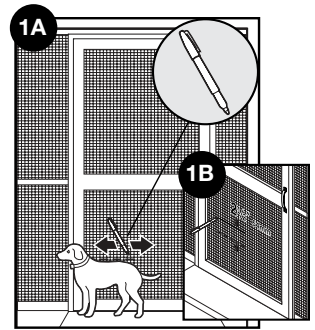
Locks: Tabs on lower corners of interior frame used to control the pet's access to the pet door.

Installation in Screen Doors

Step 1

Determine Pet Door Location

- 1A.** Measure and mark your pet's shoulder height on the outside of the screen door with a felt tip marker.
- 1B.** Determine the location for the pet door. Measure 2½" up from shoulder height line and draw a horizontal line using a level. This will be the position of the top edge of the pet door. Check to make sure there is room for the frame to fit in the screen area when the top edge of the frame is aligned with the line.

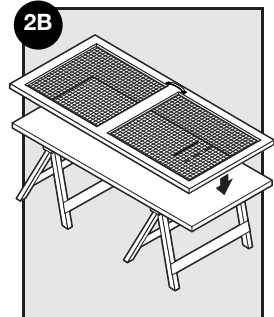
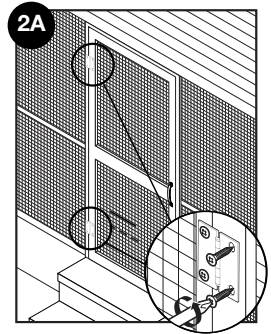


NOTICE If your screen door is not level, the pet door must be marked level to swing properly.

Step 2

Prepare Door

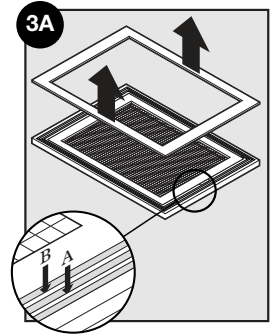
- 2A.** Remove the screen door by removing the door hinge pins or by removing screws that hold the door to the hinge.
- 2B.** Place on a raised level surface such as a work bench or a board on saw horses. Place the marked side of door facing up.



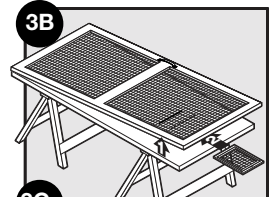
Step 3

Cut Pet Door Opening

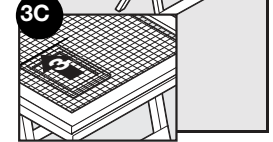
3A. Separate the Interior Frame from the Exterior Frame.



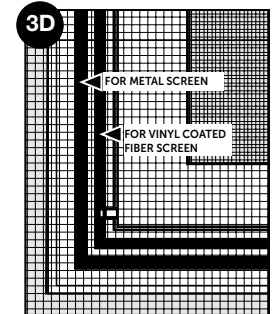
3B. Place the Interior Frame (with flap) on the underside of the screen door.



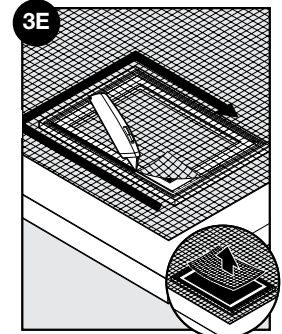
3C. Reference the mark made from the pet's shoulder height (In Step 1). Align the top edge of the Pet Screen Door Interior Frame with the line drawn 2½" above the shoulder height line.



3D. Use groove A on the pet screen door for a metal screen and groove B for a vinyl coated fiber screen.



3E. Mark the cutout with a felt tip marker. Using the frame as a guide carefully cut the screen using a utility knife.



NOTICE Make sure you protect the surface underneath the door where you will be cutting.

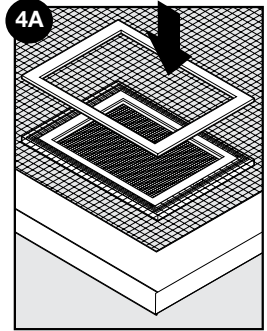
Step 4

Install the Pet Door

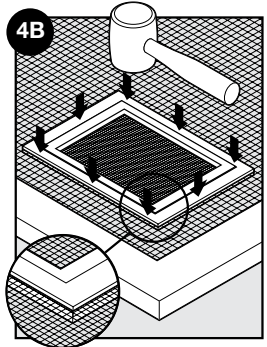
- 4A.** After cutting the opening in the screen, place the Exterior Frame on top of the Interior Frame.

NOTICE

Installer can put a small bead of silicone caulk in each corner of the Interior Frame before installation.



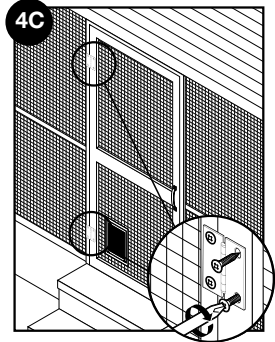
- 4B.** Use a rubber mallet and tap the two frames together until fully seated. Make sure you have a solid surface under the door to support it while the frames are assembled.



- 4C.** Place the screen door back on the hinges.

NOTICE

It is not recommended to use the locks if your pet is forceful when using the Pet Screen Door to keep from damaging your screen or the pet door.

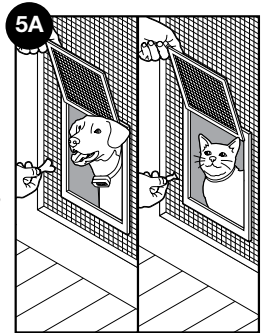


Step 5

Train Your Pet

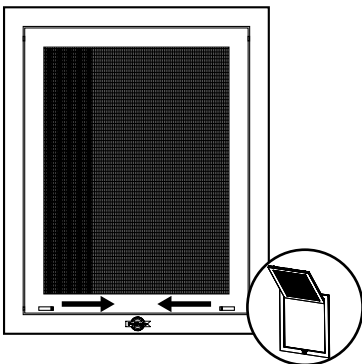
5A. Rehang your door and begin training your pet. It may help for you to be on one side of the door and your pet on the other. Lift or tape open the flap and try to talk your pet through the pet door. After your pet has gone through a few times, allow the flap to touch your pet's back so they will become comfortable using the pet door. If your pet will not go through the door, tape the flap open until they use it on their own. Do not use the locks until your pet is familiar with using the pet door.

Helpful Tip: Try treats or toys to encourage your pet to go through the pet door and become comfortable using it.

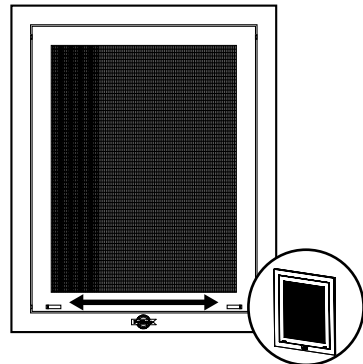


Pet Screen Door Locking System

The Pet Screen Door locks on your door and allow you to control your pet's access. Do not use the Pet Screen Door lock until your pet is familiar with using the pet door.



Opened: Setting the pet door to the opened position allows your pet full access to come and go as they please. Slide the two locking tabs to the center until it is in the unlocked position.



Locked: To keep your pet from using the pet door, set the Pet Screen Door lock to the locked position. Slide the two locking tabs toward the outside frame until it is in the locked position.

Customer Care

USA & Canada - Tel: 800-732-2677

Monday - Friday 8 AM - 8 PM / Saturday 9 AM - 5 PM

Australia - Tel: 1800 786 608

Monday - Friday 8:30 AM - 5 PM

New Zealand - Tel: 0800 543 054

Monday - Friday 10:30 AM - 7 PM

Terms of Use and Limitation of Liability

1. Terms of Use

This Product is offered to you conditioned upon your acceptance without modification of the terms, conditions and notices contained herein. Usage of this Product implies acceptance of all such terms, conditions, and notices.

2. Proper Use

This product is designed for use with pets where training is desired. The specific temperament of your pet may not work with this product. If you are unsure whether this is appropriate for your pet, please consult your veterinarian or certified trainer. Proper use includes reviewing the entire Installation Guide provided with your product including any specific Caution statements.

3. No Unlawful or Prohibited Use

This Product is designed for use with pets only. This Product is not intended to harm, injure, or provoke. Using this Product in a way that is not intended could result in violation of Federal, State or local laws.

4. Limitation of Liability

In no event shall Radio Systems Corporation be liable for any direct, indirect, punitive, incidental, special or consequential damages, or any damages whatsoever arising out of or connected with the use or misuse of this Product. Buyer assumes all risks and liability from the use of this Product.

5. Modification of Terms and Conditions

Radio Systems Corporation reserves the right to change the terms, conditions and notices under which this Product is offered.

Warranty

One Year Non-Transferrable Limited Warranty

This Product has the benefit of a limited manufacturer's warranty. Complete details of the warranty applicable to this Product and its terms can be found at www.petsafe.net and/or are available by contacting your local Customer Care Center:

Radio Systems PetSafe Europe Ltd, 2nd Floor, Elgee Building, Market Square, Dundalk, Co. Louth, Ireland

Radio Systems Corporation, 10427 PetSafe Way, Knoxville, TN 37932 USA

Australia/New Zealand – In compliance with the Australian Consumer Law, Warranties Against Defects, effective January 1, 2012, warranty details of this Product are as follows:

One Year Non-Transferrable Limited Warranty

What is covered: Radio Systems Australia Pty Ltd (hereinafter referred to as "Radio Systems") warrants to the original retail purchaser, and not any other purchaser or subsequent owner, that its Product, when subject to normal and proper residential use, will be free from defects in material or workmanship for a period of one (1) year from the purchase date. An "original retail consumer purchaser" is a person or entity who originally purchases the Product, or a gift recipient of a new Product that is unopened and in its original packaging. When serviced by Radio Systems Customer Service, Radio Systems covers labor and parts for the first year of ownership; after the first year, a service or upgrade charge will apply relative to replacement of the Product with new or refurbished items at Radio Systems' sole discretion.

The limited warranty is non-transferrable and shall automatically terminate if the original retail consumer purchaser resells the Radio Systems Product or transfers the property on which the Radio Systems Product is installed. This Limited Warranty excludes accidental damage due to dog chews; lightning damage; or neglect, alteration, and misuse. Consumers who purchase products outside of Australia, New Zealand, or from an unauthorized dealer will need to return the Product to the original place of purchase for any warranty issues. Please note that Radio Systems does not provide refunds, replacements, or upgrades for change of mind, or any other reason outside of these Warranty terms.

Claims Procedure: Any claim made under this Warranty should be made directly to Radio Systems Australia Pty Ltd Customer Care Centre at:

Radio Systems Australia Pty Ltd
PO Box 7266, Gold Coast Mail Centre QLD 9726, Australia
Australia Residents: 1800 786 608
New Zealand Residents: 0800 543 054
Email: info@petsafeaustralia.com.au

To file a claim, a proof of purchase must be provided. Without a proof of purchase, Radio Systems will not repair or replace faulty components. Radio Systems requests the Consumer to contact the Radio Systems Customer Care Centre to obtain a Warranty Return Number, prior to sending the Product. Failure to do so may delay in the repair or replacement of the Product. If the Product is deemed to be faulty within 30 days from date of original purchase, Radio Systems will organize for a replacement to be sent in advance of returning the faulty Product. A Post Bag will be included with the replacement Product for the return of the faulty Product. The Product must be returned within 7 days of receiving the replacement. If the Product is deemed to be faulty after 30 days from the date of original purchase, the consumer will be required to return the Product to Radio Systems at the consumer's own expense. Radio Systems will test and replace the faulty unit or its components and return to the consumer free of charge, provided the Product is within its said warranty period. This warranty is in addition to other rights and remedies available to you under the law. Radio Systems goods come with guarantees that cannot be excluded under the Australia Consumer Law. You are entitled to a replacement or refund for a major failure and for compensation for any other reasonably foreseeable loss or damage. You are also entitled to have the goods repaired or replaced if the goods fail to be of acceptable quality and the failure does not amount to a major failure.

Should you have any queries or require any further information, please contact our Customer Care Center on 1800 786 608 (Australia) or 0800 543 054 (New Zealand)

Radio Systems Corporation
10427 PetSafe Way
Knoxville, TN 37932
1-800-732-2677
www.petsafe.net
400-1984/1

©2015 Radio Systems Corporation

DO NOT PRINT THIS PAGE

Radio Systems [®] CORPORATION The world leader in pet training products	RSC Part #: 400-1984
	Description: GUIDE INSTALLATION P1-ZB-11
Material: 100gsm Wood Free Paper Printing: Black Finishing: Die Cut, Fold, 2 Saddle Stitch, and Bulk Pack	Created by: MJ
	Revision by: TK
	Initial Creation Date: 06/11/2015
	Approved by: L Taylor
	Date Approved: 07/24/15
	Program used: INDESIGN CC
	Revision: 001
	ECO: RSC12240
Revision Description: Minor edits to content	
Revision Date: 07/24/15	