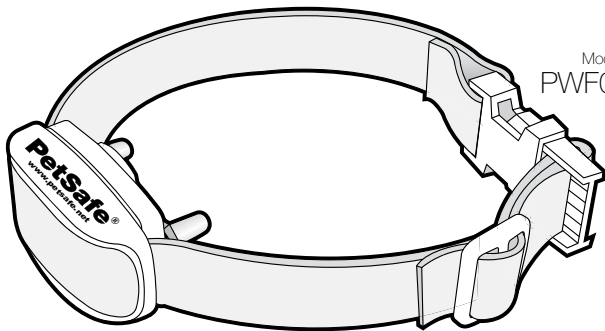




protect. **teach.** **love.**

pawz away<sup>®</sup>  
pet barrier  
extra receiver collar  
operating and training guide

Model Number  
PWF00-13664



PLEASE READ THIS ENTIRE GUIDE BEFORE BEGINNING

# Important Safety Information

## Explanation of Attention Words and Symbols used in this guide



This is the safety alert symbol. It is used to alert you to potential personal injury hazards. Obey all safety messages that follow this symbol to avoid possible injury or death.

### **⚠ WARNING**

**WARNING** indicates a hazardous situation which, if not avoided, could result in death or serious injury.

### **CAUTION**

**CAUTION**, used without the safety alert symbol, indicates a hazardous situation which, if not avoided, could result in harm to your pet.

### **NOTICE**

**NOTICE** is used to address safe use practices not related to personal injury.

---

### **⚠ WARNING**

Not for use with aggressive dogs. Do not use this product if your dog is prone to aggressive behavior. Aggressive dogs can cause severe injury or death to their owners and others. If you are not sure that this product is right for your dog, please talk to your veterinarian or a certified trainer.

### **CAUTION**

This System is NOT a solid barrier. The system is designed to act as a deterrent, using Static Correction to condition pets to remain outside of the established barrier area. It is important that you reinforce training with your pet on a regular basis. Since the tolerance level to Static Correction varies from pet to pet, Radio Systems® Corporation CANNOT guarantee that the system will in all cases keep a pet outside of the established barrier area. Not all pets can be trained to avoid entering the barrier area. Therefore, if you have reason to believe that your pet may harm himself or pose a danger to others if he is not kept from entering the barrier area, you should NOT rely solely upon this system to restrict your pet. Radio Systems® Corporation shall NOT be liable for any personal injuries, property damage, injury to or death of your pet, economic loss or any consequential damages sustained as a result of any animal entering the barrier area.

## CAUTION

Proper fit of the collar is important. A collar worn for too long or made too tight on the pet's neck may cause skin damage, ranging from redness to pressure ulcers. This condition is commonly known as bed sores.

- Avoid leaving the collar on the pet for more than 12 hours per day.
- When possible reposition the collar on the pet's neck every 1 to 2 hours.
- Check the fit to prevent excessive pressure; follow the instructions in this manual.
- Never connect a lead to the electronic collar; it will cause excessive pressure on the contacts.
- When using a separate collar for a lead, don't put pressure on the electronic collar.
- Wash the pet's neck area and the contacts of the collar weekly with a damp cloth.
- Examine the contact area daily for signs of a rash or a sore.
- If a rash or sore is found, discontinue use of the collar until the skin has healed.
- If the condition persists beyond 48 hours, see your veterinarian.
- For additional information on bed sores and pressure necrosis, please visit our website.

These steps will help keep your pet secure and comfortable. Millions of pets are comfortable while they wear stainless steel contacts. Some pets are sensitive to contact pressure. You may find after some time that your pet is very tolerant of the collar. If so, you may relax some of these precautions. It is important to continue daily checks of the contact area. If redness or sores are found, discontinue use until the skin has fully healed.

You may need to trim the hair in the area of the Contact Points. Never shave the pet's neck; this may lead to a rash or infection.

To prevent an unintended correction, do not perform set up procedures while the Receiver Collar is on your pet.

If you are using a collar and leash for training, be sure the extra collar does not put pressure on the Contact Points of the Receiver Collar.

Thank you for choosing PetSafe® Brand. You and your pet deserve a companionship that includes memorable moments and a shared understanding together. Our products provide you with the tools and technologies to successfully train your pet. If you have any questions about our products or training your pet, please visit our website at [www.petsafe.net](http://www.petsafe.net) or contact our Customer Care Center at 1-800-732-2677.

To get the most protection out of your warranty, please register your product within 30 days at [www.petsafe.net](http://www.petsafe.net). By registering and keeping your receipt, you will enjoy the product's full warranty and should you ever need to call the Customer Care Center, we will be able to help you faster. Most importantly, PetSafe® will never give or sell your valuable information to anyone. Complete warranty information is available online at [www.petsafe.net](http://www.petsafe.net).

# Table of Contents

Components.....	6
Other Items Needed But Not Included.....	6
Other Items You May Need .....	6
How the System Works .....	7
Key Definitions .....	8
<b>Operating Guide</b> .....	9
Fit the Receiver Collar on Your Pet .....	9
To Re-Thread the Collar .....	11
Receiver Collar Batteries.....	12
Additional Feature .....	13
<b>Training Guide</b> .....	14
Begin Your Pet's First Session .....	14
Further Training .....	15
Additional Information .....	15
<b>Troubleshooting</b> .....	16
Terms of Use and Limitation of Liability .....	17
Compliance .....	18
Customer Care International .....	19
Perchlorate Battery.....	19
Warranty .....	20

# Components

- Receiver Collar
  - (2) 3-V Lithium Batteries
  - Test Light Tool
  - Operating and Training Guide
- 

## Other Items Needed But Not Included

- Pawz Away® Mini, Indoor, Outdoor or Barrier Transmitter
- 

## Other Items You May Need

- Non-metallic collar and leash
- Scissors
- Lighter

# How the System Works

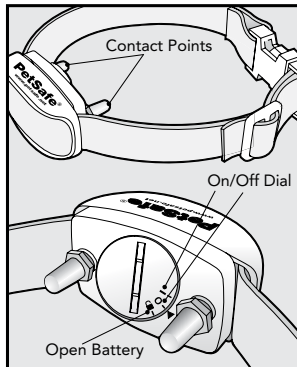
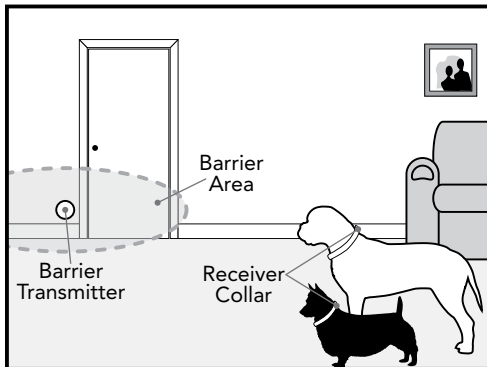
The PetSafe® Pawz Away® Pet Barrier keeps your pet away from a certain room, away from trash, off of furniture, etc. Just place the Barrier Transmitter (not included) near the area your pet should avoid. The Barrier Transmitter sends a spherical or elliptical radio signal, depending upon which Barrier Transmitter is used. Your pet wears a Receiver Collar with Contact Points that touch his neck. When your pet enters the Barrier Area, he'll hear a series of audible tones from the Receiver Collar and he will feel a safe Progressive Static Correction, delivered through the Contact Points on his neck. The Progressive Static Correction will get his attention, but will not cause harm. The correction continues until your pet leaves the Barrier Area. If your pet doesn't leave, the collar will continue to correct at the maximum level after 3 seconds until the 15 second time-out. The PetSafe® Pawz Away® Pet Barrier has been proven safe, comfortable, and effective for pets at least 6 months old and over 5 pounds.

# Key Definitions

**Receiver Collar:** Receives the radio signal from the Barrier Transmitter.

**Contact Points:** Deliver the safe Progressive Static Correction when your pet enters the Barrier Area.

**Progressive Static Correction:** Static correction begins at the lowest level and automatically increases to the maximum level within 3 seconds of the first detection in the Barrier Area. From 3 seconds until the 15 second time-out, the collar will continue to correct at the maximum level until your pet leaves the Barrier Area.





# Operating Guide

## Fit the Receiver Collar on Your Pet

**Important: Proper fit and placement of your Receiver Collar is necessary for effective operation. The Contact Points must have direct contact with your pet's skin on the underside of his neck.**

### **CAUTION**

Proper fit of the collar is important. A collar worn for too long or made too tight on the pet's neck may cause skin damage. Ranging from redness to pressure ulcers; this condition is commonly known as bed sores.

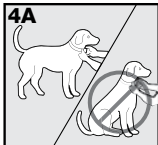
- Avoid leaving the collar on the pet for more than 12 hours per day.
- When possible reposition the collar on the pet's neck every 1 to 2 hours.
- Check the fit to prevent excessive pressure; follow the instructions in this manual.
- Never connect a lead to the electronic collar; it will cause excessive pressure on the contacts.
- When using a separate collar for a lead, don't put pressure on the electronic collar.
- Wash the pet's neck area and the contacts of the collar weekly with a damp cloth.
- Examine the contact area daily for signs of a rash or a sore.
- If a rash or sore is found, discontinue use of the collar until the skin has healed.
- If the condition persists beyond 48 hours, see your veterinarian.
- For additional information on bed sores and pressure necrosis, please visit our website.

These steps will help keep your pet secure and comfortable. Millions of pets are comfortable while they wear stainless steel contacts. Some pets are sensitive to contact pressure. You may find after some time that your pet is very tolerant of the collar. If so, you may relax some of these precautions. It is important to continue daily checks of the contact area. If redness or sores are found, discontinue use until the skin has fully healed.

You may need to trim the hair in the area of the Contact Points. Never shave the dog's neck; this may lead to a rash or infection.

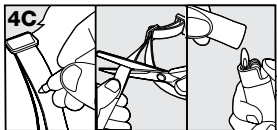
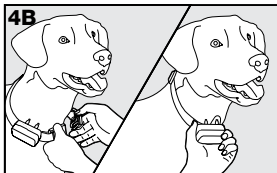
To assure a proper fit, please follow these steps:

1. Using the edge of the Test Light Tool, turn the battery door to the OFF position.
2. Start with your pet standing comfortably **(4A)**.
3. Place the Receiver collar on your pet so that the PetSafe® logo is facing your pet's chin. Center the Contact Points underneath your pet's neck, touching the skin. If your pet has a long or thick coat then it may be necessary to trim the hair around the Contact Points to make sure that contact is consistent.

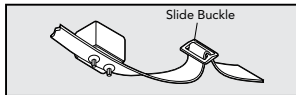


*Note: The Receiver Collar comes with Short Contact Points. Long Contact Points are available and can be purchased through the Customer Care Center.*

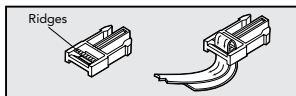
4. Adjust the tightness of the Receiver Collar to fit your pet's neck. Check the tightness of the Receiver Collar by inserting one finger between the end of a Contact Point and your pet's neck. The fit should be snug but not constricting **(4B)**.
5. Allow your pet to wear the Receiver Collar for several minutes then recheck the fit. Check the fit again as your pet becomes more comfortable with the Receiver Collar.
6. Once you are satisfied with the fit of the Receiver Collar then you may trim any excess collar strap as follows **(4C)**:
  - a. Mark the desired length of the Receiver Collar with a pen. Allow for growth if your pet is young or grows a thick winter coat.
  - b. Remove the Receiver Collar from your pet and cut off the excess.
  - c. Before placing the Receiver Collar back onto your pet, seal the edge of the cut collar by applying a flame along the frayed edge.



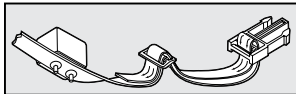
## To Re-Thread the Collar



The slide buckle prevents the collar from becoming loose around your pet's neck.



The ridges must be facing up; the collar will slip if it is not properly threaded.



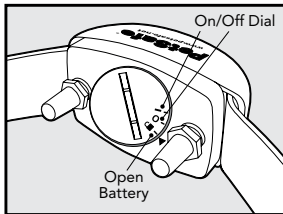
# Receiver Collar Batteries

The PetSafe® Pawz Away® Receiver Collar uses two 3-volt Lithium coin cell batteries, size CR2032. Replacement batteries can be found at many retailers or through the Customer Care Center. Contact the Customer Care Center at 1-800-732-2677 or visit our website at [www.petsafe.net](http://www.petsafe.net) to locate a retailer near you.

## To replace the batteries:

1. Using the edge of the Test Light Tool, turn the battery door to the OPEN (🔓) position.
2. Lift the battery door out and turn the door over. The two 3-volt Lithium coin cell batteries are stored inside the door.
3. Remove the old batteries and insert new batteries with the positive (+) side facing the battery door lid.
4. Insert battery door back into the Receiver Collar and turn to either the OFF(O) or ON(I) position to lock the door in place.

Battery life will vary depending on how often your pet tests the system and receives a Static Correction. Check the Receiver Collar and Barrier Transmitter every month to ensure the system is working properly. To prolong battery life, it is recommended that you turn the Receiver Collar and Barrier Transmitter OFF when not in use.



# **Additional Feature**

## **Time Out Feature**

For your pet's safety, the Receiver Collar has a built in Time Out feature. If your pet stays in the Barrier Area for longer than 15 seconds the Receiver Collar will stop delivering the Progressive Static Correction. The Receiver Collar will then administer a random single Static Correction every 5 to 10 seconds at the maximum level until the pet leaves the Barrier Area. Once your pet leaves the Barrier Area, the Receiver Collar resets itself and will deliver a Progressive Static Correction the next time your pet enters the Barrier Area.

# Training Guide

The PetSafe® Pawz Away® Pet Barrier operates on the principle of positive and negative reinforcement. Your pet will learn to avoid the Barrier Areas you have set after receiving a Progressive Static Correction (negative reinforcement) and your pet will learn that he is more comfortable when he avoids the Barrier Areas (positive reinforcement).

In some cases, it may not be necessary to train your pet. You can let your pet wander freely to determine the new boundaries. Monitor your pet during his first session. Pets learn at different rates and it may take several times for your pet to successfully understand and honor the Barrier Areas.

## Begin Your Pet's First Session

1. Move your pet away from the Barrier Area.
2. Activate the Receiver Collar by turning the battery door to the ON(O) position. Place the Receiver Collar around your pet's neck. Be sure that the Receiver is directly under your pet's neck.
3. Allow your pet to wander freely to learn the new boundaries.

## Further Training

If your pet is confused or unsure how to avoid the Barrier Areas then you may need to teach your pet how to do so by following these easy training steps:

1. Place a second non metallic collar on your pet ABOVE the Receiver Collar and attach a long leash.

### CAUTION

Be sure the extra collar does not put pressure on the Contact Points of the Receiver Collar.

2. Walk your pet toward the Barrier Area. As soon as you hear the tone or you see that your pet is receiving a Static Correction, gently pull him away from the Barrier Area and back into the safe zone.
3. Reward your pet with praise each time he leaves the Barrier Area.
4. Practice this technique a few times until you feel that your pet is mastering avoidance of the Barrier Areas.

**Be sure to never force or entice your pet to enter the Barrier Areas.**

---

## Additional Information

- The system should only be used with healthy pets. Contact your veterinarian if you have concerns about the medical condition of your pet (medication, pregnant, heart conditions, etc).
- This system is not for vicious or aggressive pets. If your pet may pose a threat to others, **DO NOT USE THIS SYSTEM.** If you are unsure if your dog is aggressive, please consult your veterinarian or a certified trainer.

# Troubleshooting

**Pet seems to receive no stimulation.**

- Check/replace batteries in Receiver Collar.
- Use Test Light Tool to check for static correction.
- Check Receiver Collar fit to ensure Contact Points have direct skin contact.
- Check the setting on the Barrier Transmitter.

**Unable to hear Receiver Collar tone.**

- Check/Replace batteries in Receiver Collar.
- Pets easily hear tone but it may be a volume level that is difficult for you to hear.
- Use the Test Light Tool to check Receiver Collar for static correction.



# Terms of Use and Limitation of Liability

## 1. Terms of Use

This Product is offered to you conditioned upon your acceptance without modification of the terms, conditions and notices contained herein. Usage of this Product implies acceptance of all such terms, conditions, and notices.

## 2. Proper Use

This Product is designed for use with pets where training is desired. The specific temperament of your pet may not work with this Product. We recommend that you not use this Product if your pet is less than 5 pounds or if your pet is aggressive. If you are unsure whether this is appropriate for your pet, please consult your veterinarian or certified trainer.

Proper use includes reviewing the entire Guide provided with your Product and any specific Caution statements.

## 3. No Unlawful or Prohibited Use

This Product is designed for use with pets only. This pet training device is not intended to harm, injure or provoke. Using this Product in a way that is not intended could result in violation of Federal, State or local laws.

## 4. Limitation of Liability

In no event shall Radio Systems® Corporation be liable for any direct, indirect, punitive, incidental, special or consequential damages, or any damages whatsoever arising out of or connected with the use or misuse of this Product. Buyer assumes all risks and liability from the use of this Product.

## 5. Modification of Terms and Conditions

Radio Systems® Corporation reserves the right to change the terms, conditions and notices under which this Product is offered.

# Compliance

## FCC/Canada

This Class B digital apparatus complies with Canadian ICES-003. This equipment has been tested and found to comply with the limits for a Class B digital device, pursuant to Part 15 of the FCC Rules. These limits are designed to provide reasonable protection against harmful interference when the equipment is operated in a residential environment. This equipment generates, uses, and can radiate radio frequency energy and, if not installed and used in accordance with the instruction guide, may cause harmful interference to radio communications. However, there is no guarantee that interference will not occur in a practical installation. If this equipment causes harmful interference to radio or television reception, which can be determined by turning the equipment off and on, the user is encouraged to try to correct the interference by one or more of the following measures:

- Relocate the interfered receiving antenna.
- Increase the separation between the equipment and receiver.
- Connect the equipment into an outlet on a circuit different to that to which the receiver is connected.
- Contact the Customer Care Center at 1-800-732-2677.

This device complies with Industry Canada Rules. This device complies with part 15 of the FCC Rules. Operation is subject to the following two conditions: (1) This device may not cause harmful interference, and (2) this device must accept any interference received, including interference that may cause undesired operation.

Unauthorized changes or modifications to the equipment, not approved by Radio Systems® Corporation, could result in not meeting compliance with FCC regulations and could void the user's authority to operate the equipment.

## Australia

This device complies with the applicable EMC requirements specified by the ACMA (Australian Communications and Media Authority).

# Customer Care International

USA & Canada - Tel: 800-732-2677

Monday - Friday 8 AM - 8 PM / Saturday 9 AM - 5 PM

Australia - Tel: 1800 786 608

Monday - Friday 7:30 AM - 5 PM

New Zealand - Tel: 0800 543 054

Monday - Friday 10:30 AM - 7 PM

This product has the benefit of a limited manufacturer's warranty. Details of the warranty applicable to this product and its terms can be found at [www.petsafe.net](http://www.petsafe.net) and/or are available by sending a stamped addressed envelope to

Radio Systems PetSafe Europe Ltd.

2nd Floor, Elgee Building, Market Square,

Dundalk, Co. Louth, Ireland, +353 (0) 42 942 1811

---

## Perchlorate Battery

Perchlorate Material – special handling may apply.

See [www.dtsc.ca.gov/hazardouswaste/perchlorate](http://www.dtsc.ca.gov/hazardouswaste/perchlorate).

# Warranty

## **One Year Non-Transferrable Limited Warranty**

This Product has the benefit of a limited manufacturer's warranty. Complete details of the warranty applicable to this Product and its terms can be found at [www.petsafe.net](http://www.petsafe.net).

**Australia/New Zealand** - In compliance with the Australian Consumer Law, Warranties Against Defects, effective January 1, 2012, warranty details of this Product are as follows:

## One Year Non-Transferrable Limited Warranty

**What is covered:** Radio Systems Australia Pty Ltd (hereinafter referred to as “Radio Systems”) warrants to the original retail purchaser, and not any other purchaser or subsequent owner, that its Product, when subject to normal and proper residential use, will be free from defects in material or workmanship for a period of one (1) year from the purchase date. An “original retail consumer purchaser” is a person or entity who originally purchases the Product, or a gift recipient of a new Product that is unopened and in its original packaging. When serviced by Radio Systems Customer Service, Radio Systems covers labor and parts for the first year of ownership; after the first year, a service or upgrade charge will apply relative to replacement of the Product with new or refurbished items at Radio System’s sole discretion.

The limited warranty is non-transferrable and shall automatically terminate if the original retail consumer purchaser resells the Radio Systems Product or transfers the property on which the Radio Systems Product is installed. This Limited Warranty excludes accidental damage due to dog chews; lightning damage; or neglect, alteration, and misuse. Consumers who purchase Products outside of Australia, New Zealand, or from an unauthorized dealer will need to return the Product to the original place of purchase for any warranty issues.

Please note that Radio Systems does not provide refunds, replacements, or upgrades for change of mind, or for any other reason outside of these Warranty terms.

## Claims Procedure:

Any claim made under this Warranty should be made directly to Radio Systems Australia Pty Ltd Customer Care Centre at:

Radio Systems Australia Pty Ltd  
PO Box 765, Mudgeeraba QLD 4213  
Australia Residents: 1800 786 608  
New Zealand Residents: 0800 543 054  
Email: info@petsafeaustralia.com.au

To file a claim, a proof of purchase must be provided. Without a proof of purchase, Radio Systems will not repair or replace faulty components. Radio Systems requests the Consumer to contact the Radio Systems Customer Care Centre to obtain a Warranty Return number, prior to sending the Product. Failure to do so may delay in the repair or replacement of the Product.

If the Product is deemed to be faulty within 30 days from date of original purchase, Radio Systems will organise for a replacement to be sent in advance of returning the faulty Product. A Post Bag will be included with the replacement Product for the return of the faulty Product. The Product must be returned within 7 days of receiving the replacement. If the Product is deemed to be faulty after 30 days from the date of original purchase, the consumer will be required to return the Product to Radio Systems at the consumer's own expense. Radio Systems will test and replace the faulty unit or its components and return to the consumer free of charge, provided the Product is within its said warranty period. This warranty is in addition to other rights and remedies available to you under the law. Radio Systems goods come with guarantees that cannot be excluded under the Australia Consumer Law. You are entitled to a replacement or refund for a major failure and for compensation for any other reasonably foreseeable loss or damage. You are also entitled to have the goods repaired or replaced if the goods fail to be of acceptable quality and the failure does not amount to a major failure.

Should you have any queries or require any further information, please contact our Customer Care Centre on 1800 786 608 (Australia) or 0800 543 054 (New Zealand).



Radio Systems® Corporation

10427 PetSafe Way

Knoxville, TN 37932

1-800-732-2677

[www.petsafe.net](http://www.petsafe.net)

Protected by US Patents 7,046,152; 7,068,174;  
7,117,822; 7,204,204; 7,278,376; 7,495,570; 8,342,135.

400-035/2

©2014 Radio Systems® Corporation