

# WICK INSTALLATION INSTRUCTIONS

1. Following the instructions in the owners manual that came with you heater, remove the wick adjuster knob and outer cabinet of the heater. Remove the wick assembly, wick cover and old wick.

Clean any residue off of your wick adjuster at this time.

2. Fold the wick in half left to right with the fiberglass at the top and one pin on the outside fold.

3. With the "UP ↑" mark on the metal wick sleeve reading up, start by placing the pin on the outside of the fold of the wick in the round hole of the wick sleeve. Then unfold the wick allowing the other 2 pins to insert into the other 2 holes in the wick sleeve.

4. By pressing on the inside of the wick, and the outside of the wick sleeve, attach the retainer teeth to the wick evenly around the inside of the wick sleeve.

5. Temporarily replace the wick adjuster knob. Then turn the wick adjuster assembly upside down on a flat surface.

6. Line the wick pins up with the slanted grooves on the inside of the wick adjuster assembly and place the wick in the wick sleeve in the wick adjuster assembly so it rests on the wick pins.

7. Press the pins inward, one at a time, and the wick sleeve down to insert the three pins into the slanted groove in the wick adjuster assembly. Press from the inside of the wick to insert the pins securely into the grooves.

8. Turn the wick adjuster knob to verify that the wick moves up and down.

9. With the wick adjuster assembly still upside down, align the 4 tabs on the wick cover with the 4 holes in the base of the wick adjuster assembly and snap it into place, being certain of firm contact at all points.

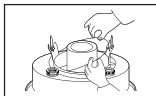
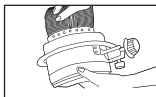
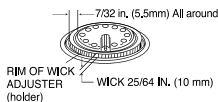
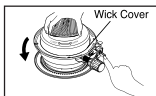
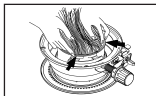
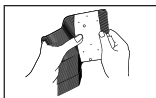
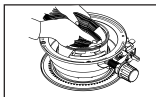
10. Turn the wick assembly right side up, and while holding the reset button down, turn the wick adjustment knob to the fully raised position. The wick height should be 10mm (3/8").

11. With the wick in the fully raised position, gently pull the bottom of the wick skirt through the bottom of the wick cover to remove any slack. About 1 1/2 of wick should hang below the wick cover. Gently press wick skirt against bottom of the wick cover to secure retainer teeth.

12. Make sure that the rubber seal is seated evenly around the rim of the tank opening.

13. With the wicks still in the fully raised position, replace the wick adjuster assembly on the heater tank with the 4 studs on the take through the 4 holes on the wick adjuster assembly. Firmly press the assembly down until completely seated on the tank. Replace wing nuts, gradually tightening them until the wick assembly is firmly in place.

14. While your heater is disassembled, check the Automatic Shut-off System by nudging the pendulum. Raise the wick by turning the wick adjuster knob. Raise and trip again to be certain it is operating properly.



# WICK REFERENCE CHART

Item No. RW11C8

**THIS WICK IS FOR USE IN THE FOLLOWING MODELS:**

## WICK REFERENCE CHART

Item no. RW11C8

HEATER	MODEL NO.
<i>DURA-HEAT</i>	<i>DH1051</i>
<i>DYNA-GLO</i>	<i>WK11C8</i>
<i>KERO-WORLD</i>	<i>KW-12</i>

**IMPORTANT:** If poor quality kerosene is used, a rapid accumulation of carbon and tar is likely. This may cause a strong odor and will destroy even a new wick. Additional heater damage may occur as the wick becomes more difficult to adjust. The use of improper fuel, old kerosene or kerosene contaminated with water can cause soot, carbon buildup, odor, low flame, uneven burning or make the flame difficult to extinguish. Always make sure that the flame in your heater is fully extinguished.

**NOTE:** The following wick replacement instructions are to only serve as a guide for installing this replacement wick. You should never install a wick without referring to the instructions manual that came with your heater.