

Installation Instructions

FOR

Model SCR-44
44" x 44"

&

Model XLR-52
48" x 52"



ATTENTION

IF ANY PARTS ARE MISSING OR DAMAGED

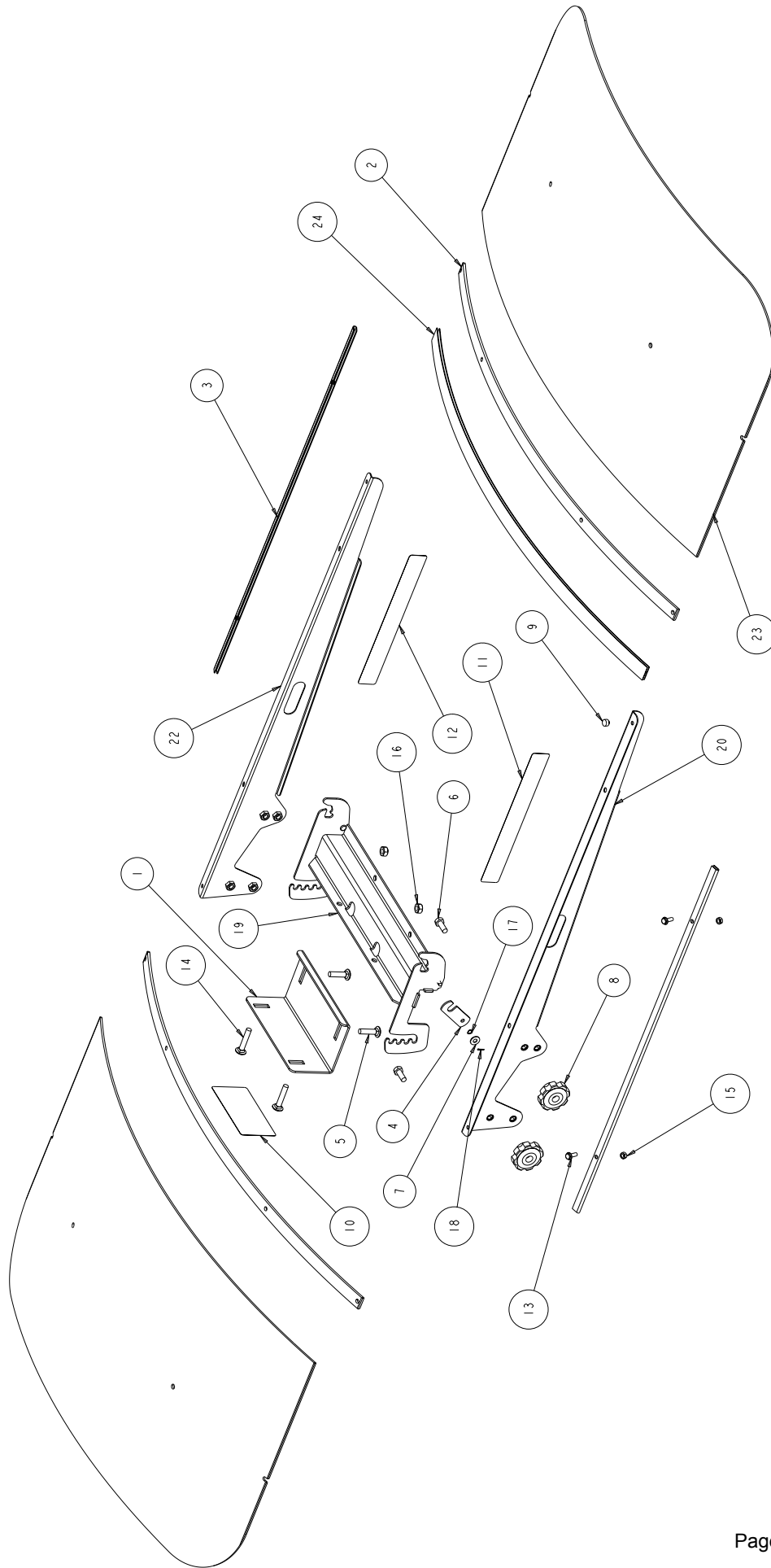
DO NOT CALL THE STORE

c:\projects\tuff top 44 & 54\ instructions



MADE IN U.S.A.

1132 W. 1st Street
McPherson, Kansas 67460
1-800-677-0898 1-620-241-3513
Fax 1-620-241-3532
www.femcomfg.com



SCR - 44

ITEM #	QTY	PART NUMBER	PART DESCRIPTION
1	1	1983	CLAMP
2	2	1986	BOW
3	2	1987	EDGE CHANNEL
4	2	1989	LOCK
5	2	202078783	BOLT CRG 3/8 - 16 X 1.50 GR 2
6	4	202659883	BOLT HHCS 3/8 - 16 X 1.00 GR 5
7	2	202720283	WASHER FLAT 184 ANSI A
8	4	230321701	KNOB
9	4	230322001	BUMPER 9/16
10	1	286332000	DECAL WARNING (LOGO)
11	1	286334600	DECAL WARNING (ENGLISH)
12	1	286334700	DECAL WARNING (SPANISH)
13	8	292007083	BOLT HH FLG 1/4 - 20 X .75 GR 5
14	2	292025683	BOLT CRG 3/8 - 16 X 2.50 GR 2
15	8	292511383	NUT HXNYLK 1/4 - 20
16	4	292511683	NUT HXNYLK 3/8 - 20
17	2	293004883	WASHER BOWED 1/4
18	2	297002483	PIN COTTER 5/64 X 1/2
19	1	303023860	BRACKET W/A
20	1	1884F	STRUT W/A (RIGHT)
22	1	1885F	STRUT W/A (LEFT)
23	2	2988-18	PANEL TOP(WHITE - SCR - 44)
	2	2988-02	PANEL TOP (BLUE - SCR - 44)
	2	2988-05	PANEL TOP (RED - SCR - 44)
	2	2988-26	PANEL TOP (ORANGE - SCR - 44)
	2	2988-04	PANEL TOP (GREEN - SCR - 44)
	2	2988-16	PANEL TOP (GRAY - SCR - 44)
24	1	207024401	DIVIDER STRIP
	8.33 FT	207021401	EDGE TRIM 100 B-3 X 1/8

XLR - 52

NOT SHOWN

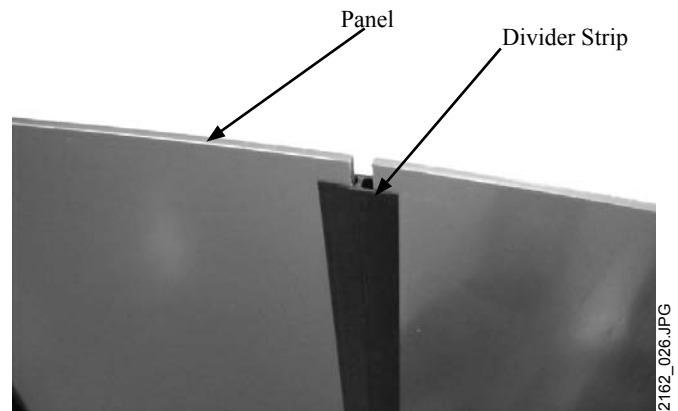
QTY	PART NUMBER	PART DESCRIPTION
2	3978-18	PANEL TOP (WHITE - XLR - 52)
2	3978-02	PANEL TOP (BLUE - XLR - 52)
2	3978-05	PANEL TOP (RED - XLR - 52)
2	3978-26	PANEL TOP (ORANGE - XLR - 52)
2	3978-04	PANEL TOP (GREEN - XLR - 52)
2	3978-16	PANEL TOP (GRAY - XLR - 52)
4	3976	BOW EXTENDERS
1	207024301	DIVIDER STRIP

IMPORTANT

Carefully study exploded view and steps before assembly. Leave all hardware loose until instructed to tighten. When assembling, a flat surface will be helpful.

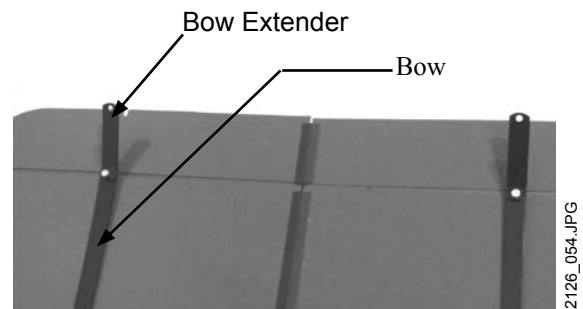
STEP 1

1. Starting from the edge of one top panel, slide divider strip on to panel.
2. Center divider strip on panel.
3. Slide other top panel into divider strip.



STEP 2

1. Attach two (2) bows to panels using four (4) 1/4 x 3/4 bolts and lock nuts.
2. On model XLR-52 attach four (4) bow extenders to panel and bow ends using four (4) 1/4 x 1 bolts and lock nuts.



STEP 3

1. Install edge channels to edge of panels.
2. Attach edge channels to bows or bow extenders using four (4) 1/4 x 3/4 bolts and lock nuts.



STEP 4

1. Install rubber bumpers to front and back of left and right struts.



2162_012.JPG

STEP 5

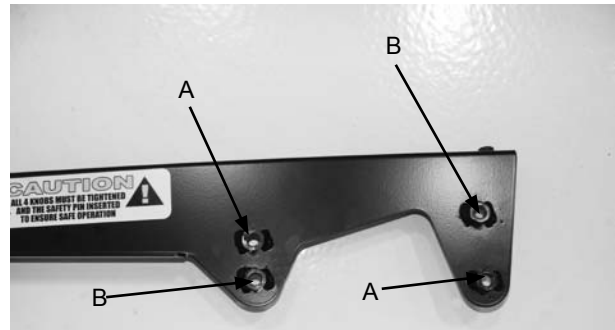
1. Remove nuts from bows and attach left and right struts with wide flange facing out.
2. Tighten all bolts.



2126_068.JPG

STEP 6

1. For straight up and rear leaning roll bars insert two (2) 3/8 x 1 bolts in holes (A) with head of bolt against weld nut.
2. For forward leaning roll bars use holes (B)
3. Repeat procedure for other strut and tighten bolts.



2126_016.JPG

STEP 7

1. Install lock to pin on roll bar bracket using washer and cotter pin.
2. Spread cotter pin.
3. Repeat procedure for other side.



2126_030A.JPG

STEP 8

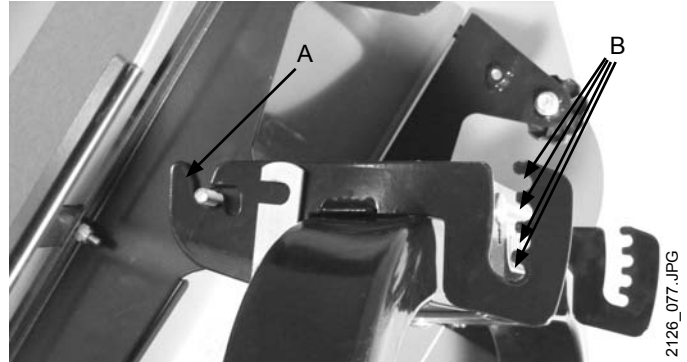
1. Lay roll bar bracket on top of roll bar with adjustment teeth towards rear.
2. Attach L-Clamp to roll bar bracket using two (2) 3/8 x 2 bolts and lock nuts on rear top and two (2) 3/8 x 1 1/4 bolts and lock nuts on front bottom.
3. Center bracket assembly on roll bar and tighten bolts.



2126_031.JPG

STEP 9

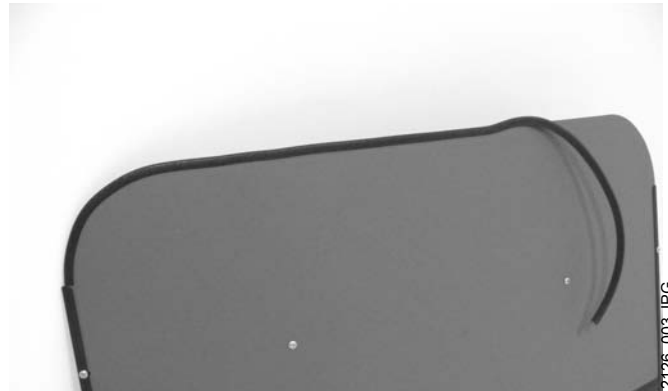
1. Mount assembled TuffTop to roll bar bracket by sliding front bolts into slots (A).
2. Lift up front of TuffTop and engage rear bolts into desired slots (B).
3. Slide lock forward over front bolts.
4. Attach four (4) clamp knobs to bolts and tighten.



2126_077.JPG

STEP 10

1. Apply edge molding to front and back panels.
2. Check and tighten all hardware periodically.



2126_003.JPG

WARNING

When transporting a TuffTop installed on a unit, it is recommended that it is in the down position. When wind and travel speeds combined exceeds 35 MPH. Remove TuffTop and transport safely. REMEMBER, if it looks like a wing it will fly.

NOTE:

Some rectangular ROPS (roll bars) are equipped with bolts on the top or the back that obstruct the installation of the TuffTop Mounting Bracket. Holes have been designed in the top of the mounting bracket to allow certain of these bolt heads to clear. In the event that such bolt heads obstruct the attachment of the mounting bracket or L-Clamp, it is usually possible to alleviate this problem with steel or plastic shims (not provided). In such an event, be sure the shims are made of weatherproof material, and that they are thicker than the bolt heads.