

# Installation Instructions

## LT40 Trimmer Line Spool Bracket

for Landscape Trailers

Bracket holds one 3 or 5 pound spool of line trimmer cord.

### Important!

Before you begin installing:

1. Read and understand these instructions completely.
2. Verify that you have received all the parts listed in the bill of materials.

### CAUTION:

Always wear safety glasses when using power tools.

## Utility Trailer Installation Instructions

### Tools and Materials Required:

- Two 9/16" Wrenches or Sockets
- Electric Drill
- 3/8" Drill Bit

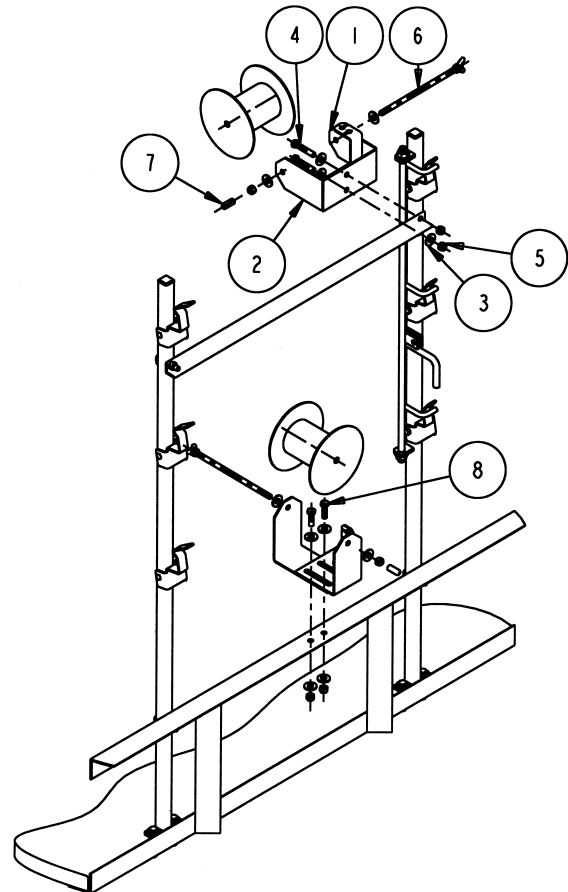
1. Place bracket #1 on the rail of your utility trailer or trimmer rack upright where you would like it mounted. Align the two 3/8" holes in the bracket with the center of the rail or post.

2. Mark the position of the two holes.

**Warning!** Check for locations of brake lines and electrical wiring etc., before drilling any holes. Any damage to trailer during installation is the installer's sole responsibility.

3. Drill 3/8" holes in the positions marked.

4. Attach the brackets as shown in drawing to the trailer with two 3/8-16 cap screws, four 3/8" flat washers, and two 3/8-16 nylock nuts supplied, do not tighten completely. Bracket #2 must slide to adjust to the width of the spool.



### Bill of Materials

ITEM	PART NO.	QTY.	DESCRIPTION
1	3005611	1	Bracket, #1, Trimmer Line Spool Rack
2	3005612	1	Bracket, #2, Trimmer Line Spool Rack
3	-	6	Washer, Flat 3/8 USS Zinc
4	-	2	Screw, HHC 3/8-16 x 2 GR 5 ZP
5	-	3	Nut, Nylock 3/8-16 x 7/16 Zinc
6	3005726	1	Bolt, Wing 3/8-16 x 8-3/8 ZN, Assembled
7	3005745	1	Cap, Vinyl 11/32" x 1", Red
8	-	2	Screw, HHC 3/8-16 x 1.25 GR 5 ZN

5. Assemble the trimmer line spool into the bracket with the wing bolt assembly, two 3/8" flat washers and one 3/8-16 nylock nut. You may replace nylock nut with the Tyler wing nut for faster spool replacement and adjustment. Assemble vinyl cap to the end of the wing bolt for safety.

6. Tighten mount bolts.

-continued on other side

## Enclosed Trailer Installation Instructions

### Tools and Materials Required:

- 9/16" Wrench or Socket
- Electric Drill
- 1/4" Drill Bit
- 3/4" Plywood Shim Strips
- Shim screws

**1.** In order to mount this rack to an enclosed trailer, **you must first add a 3/4" plywood shim strip to the trailer wall.** This shim strip must be attached to at least two wall support studs with suitable fasteners. If you don't know what kind or length of fastener to use contact your trailer dealer or manufacturer for their recommendation.

**2.** Place bracket #1 against the shim, hold level, and mark the position of the two 3/8" holes in rack onto the shim boards.

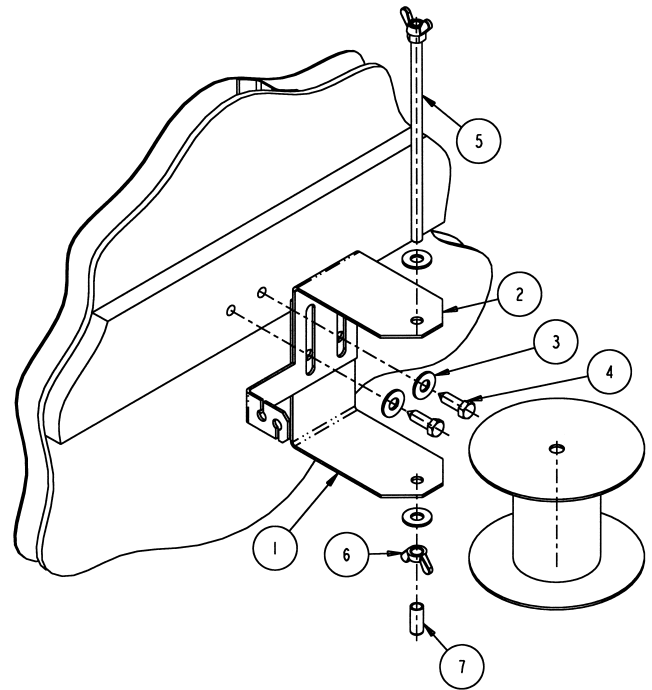
**Warning! Check for locations of brake lines and electrical wiring etc., before drilling any holes. Any damage to trailer during installation is the installer's sole responsibility.**

**3.** Drill two 1/4" pilot holes in the positions just marked for the 3/8" lag screws. **Be extremely careful not to drill through the outside trailer wall.**

**4.** Attach the brackets as shown to the trailer wall with the two 3/8" X 1-1/4" lag screws and two 3/8" flat washers supplied, do not tighten completely. Bracket #2 must slide to adjust to the width of the spool.

**5.** Assemble the trimmer line spool into the bracket with the wing bolt assembly, two 3/8" flat washers and one 3/8-16 wing nut. You may replace wing nut with the nylock nut for better security. Assemble vinyl cap to the end of the wing bolt for safety.

**6.** Tighten mount bolts.



### Bill of Materials

ITEM	PART NO.	QTY.	DESCRIPTION
1	3005611	1	Bracket, #1, Trimmer Line Spool Rack
2	3005612	1	Bracket, #2, Trimmer Line Spool Rack
3	-	4	Washer, Flat 3/8 USS Zinc
4	-	2	Screw, Hex Head Lag, 3/8 x 1-1/4 ZN
5	3005726	1	Bolt, Wing 3/8-16 x 8-3/8 ZN, Assembled
6	-	1	Nut, Wing 3/8-16 Zinc Cold Forged
7	3005745	1	Cap, Vinyl 11/32" x 1", Red

### Warranty Information

Buyers Products Co. warrants all truck/trailer hardware manufactured or distributed by it, to be free from defects in material and workmanship for a period of one year from date of shipment. Parts must be properly installed and used under normal conditions. Any product which has been altered, including modification, misuse, accident or lack of maintenance will not be considered under warranty. Normal wear is excluded. The sole responsibility of Buyers Products Co. under this warranty is limited to repairing or replacing any part or parts which are returned, prepaid, and are found to be defective by Buyers Products Co. Authorization from Buyers Products Co. must be obtained before returning any part. No charges for transportation or labor performed on Buyers' products will be allowed under this warranty.