



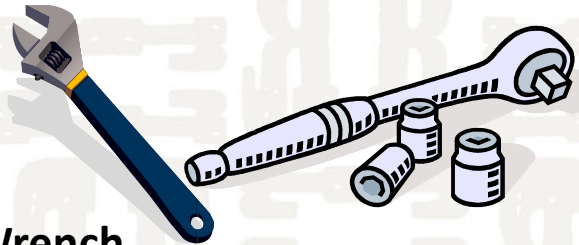
Rugg'egg' Ranch Universal Welded Wire Pen Assembly Instructions



Pictured: Welded Wire Pen with optional Canvas Top & Waterer/Feeder

Tools Required for Assembly:

14 mm Socket or Adjustable Wrench

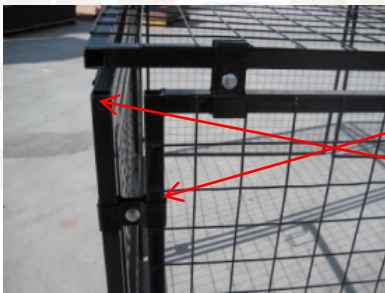
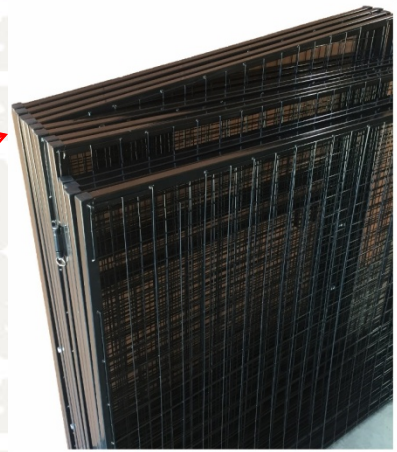


**If any components are missing, do not return to retailer!
Please call Rugged Ranch Products at: 760-734-3748**

**Please Visit our Website to see our complete line of Ranch Products .
www.RuggedRanch.net**

THERE ARE 3 SETS OF SAME SIZE PANELS:
2 – ROOF, 2 SIDE AND THE FRONT & BACK PANELS

THE SIDE PANELS ARE THE TALLER OF THE TWO
SQUARE SETS THAT ARE THE SAME HEIGHT AS
THE LOW SIDE OF THE FRONT AND BACK PANELS



USING THE 2 CUT OUTS AT THE ENDS OF EACH
BASE SECTION CLAMP THE FRONT/BACK AND
SIDES TOGETHER USING 2 CLAMPS PER CORNER.

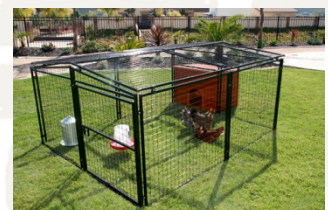
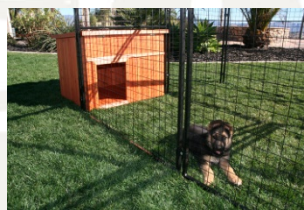
BE SURE THAT THE FRONT & BACK SECTIONS ARE
ON THE OUTSIDE OF THE PEN, IF NOT THE ROOF
WILL NOT ALIGN PROPERLY.



ATTACH FIRST ROOF SECTION USING MATCHING CUT
OUTS ON ROOF & BOTTOM PANELS TO PLACE THE
CLAMPS 2 PER INDIVIDUAL PANEL, BE SURE TO KEEP THE
ROOF & BOTTOM PANELS AS SQUARE AS POSSIBLE.

REPEAT STEP & CLAMP BOTH ROOF PANELS TOGETHER
IN MIDDLE TO COMPLETE THE PEN.

Front of Wire Pen



4 nesting areas
With separate doors

Complete your Pen by adding the optional Dog House or Wood Hutch.

Congratulations! Enjoy your Welded Wire Pen.