

Line speed and Motor current (First layer)

Line Pull	Line Speed ft./min (m/min)	Motor Current Amps
lbs.(kgs)	12V DC	12V DC
0	17.7(5.39)	80
3000(1361)	11.5(3.51)	190
5000(2268)	9.2(2.80)	260
8000(3629)	5.9(1.80)	360

Line pull and Cable capacity

Layer of Cable	Rated line pull per Layer lb.(kgs)	Cable Capacity per Layer ft.(m)
1	8000(3628.743)	20.0 (6.10)
2	6529(2961.505)	44.3 (13.50)
3	5515(2501.562)	72.2 (22.00)
4	4773(2164.996)	95.0 (28.96)

Distributed By:
TRACTOR SUPPLY COMPANY
200 POWELL PLACE
BRENTWOOD, TN 37027
For customer support, call: 1-888-376-9601
www.TractorSupply.com

MADE IN CHINA



8000 lb. Winch User Manual & Operating Instructions

Performance Specifications

Max Line Pull
8000lbs.(3628.743kgs)

Gear reduction ratio
230:1

Motor
Series wound DC12V motor with 2.7 hp output

Overall Dimensions
21.3in.(540mm) L x 6.5in.(166mm) W x 9.9in.(251mm) H

Drum size
2.48in.(62.99mm) D x 8.8in.(223.52mm) L

Cable
95ft.(28.96m) L of 21/64in.(8.334mm) D

Net weight
83.78lbs.(38kgs)

Product Overview

This winch is equipped with a series wound motor and is designed for intermittent duty general use. This winch is not to be used for industrial lifting or moving people. Improper operation could damage the winch and void the warranty.

Free spool clutch is operated by a pull and turn knob, which disengages the gearbox, allowing the cable to be released.

INSTALLATION

Correct installation of the winch is required for proper operation.

- Mount the winch on the vehicle or other fixed installation by using a screw (M10×1.5×35mm), M10 nut, Φ10 flat washer and Φ10 spring washer (four sets).

WARNING: This winch must be mounted with the cable in an under wound direction. Improper mounting could damage the winch and void the warranty.

Connect the red wire to the positive (1) terminal and the green (or black) wire to the negative (2) terminal of the battery. (See Fig. 1).

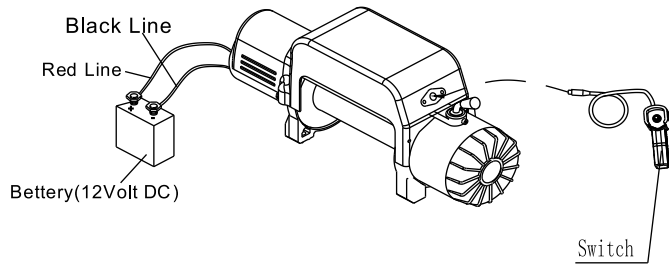


Fig.1

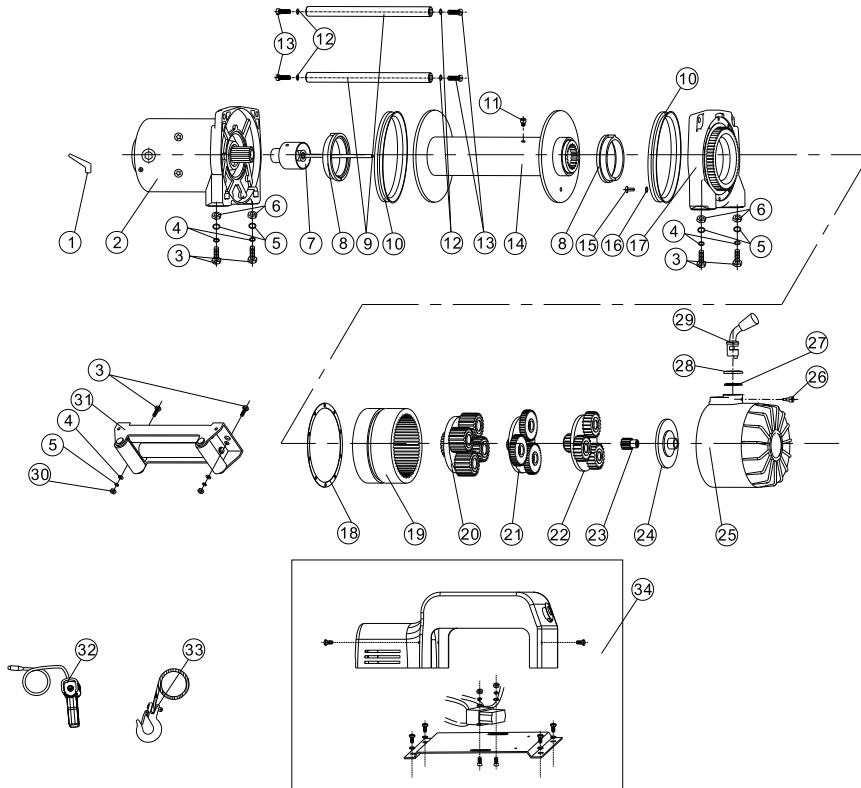
- Check the rotation direction of the drum. Pull and turn the clutch knob to the “disengaged” position (drum should turn freely by hand). Pull out some cable from the drum, and then turn the clutch knob to the “engage” position. Press the “Cable out” button on the handheld switch; if the cable is releasing then it is properly connected. Otherwise reverse the wire connections to the motor, and repeat the above-mentioned operation.

OPERATION

- Pull and turn the clutch knob, so the drum can turn freely by hand.
- Use Hand saver bar to hitch the hook of the cable assembly and pull cable to the load. Attach the cable hook to the load.

- Never approach or span the cable when the winch is under load
- When using the winch to move a load, place the vehicle transmission in neutral, set vehicle brake, and chock all wheels. The vehicle engine should be running during winch operation so that battery has full electricity. Never use the winch when there is a lack of voltage.
- Never disconnect free spool clutch when there is a load on the winch.
- Always stand clear of the cable, hook and winch. You should disconnect the clutch first, then use the hand saver bar to hitch the hook to pull the cable.
- Inspect winch, cable, hooks and other accessories frequently. A frayed cable with broken strands should be replaced immediately. Use heavy leather gloves when handling the cable. Do not let the cable slide through your hands. Inspect the cable before use. Mashed, pinched, frayed or kinked areas severely reduce the load-carrying capability. Replacement cables must be re-spoiled under 100lbs.
- To keep stated tensile, re-spool the cable around the drum tightly after operating.
- Do not operate winch when under the influence of drugs, alcohol or medication. Always stay alert during operation.
- Wear eye protection and personal protective equipment while operating winch.
- For loads over 70% of rated line pull, the use of the pulley block/snatch block to double the cable is recommended.
- Do not operate around potentially flammable liquids, gases, or debris. Sparks may occur, resulting in the ignition of fire.

WINCH ASSEMBLY



WINCH PARTS LIST (8000LBS)

ITEM#	PART#	QTY	DESCRIPTION
1	0800001	3	Terminal Protect
2	0800100	1	Motor Assembly
3	0800002	6	Cap Screw M10 x 35
4	0800003	6	Lock Washer Φ10
5	0800004	6	Think Flat Washer Φ10
6	0800005	4	Hex Nut M10
7	0800200	1	Break / Shaft Assembly
8	0800006	2	Bushing—Drum
9	0800007	2	Tie Bar
10	0800008	2	Ring Seals
11	0800009	1	Screw M8 x 10
12	0800010	4	Lock Washer Φ8
13	0800011	4	Cap Screw M8 x 30
14	0800300	1	Drum Assembly
15	0800012	10	Screw M4 x 25
16	0800013	10	Lock Washer Φ4
17	0800014	1	End Bearing
18	0800015	1	Gasket
19	0800016	1	Gear—Ring
20	0800400	1	Gear Carrier Assembly(Output)
21	0800500	1	Gear Carrier Assembly(Intermediate)
22	0800600	1	Gear Carrier Assembly(Input)
23	0800017	1	Gear—Input Sun
24	0800018	1	Trust Washer
25	0800019	1	Gear—Housing
26	0800020	1	Clutch Screw
27	0800021	1	Ring Seals
28	0800022	1	Clutch Cover
29	0800023	1	Clutch Handle
30	0800024	2	Locknut M10
31	0800700	1	Roller Fairlead
32	0800800	1	Remote Control Switch
33	0800900	1	Cable Assembly
34	0801200	1	Control Section

SAFETY PRECAUTIONS

- Never lift people or hoist loads over people. Do not lift items vertically, this winch is designed for horizontal use only.
- Never overload. Be sure all equipment used meets the winch's maximum line pull rating. When double-lining, pulley blocks should be rated for a minimum of two times the winch's line pull rating.
- Do not attempt prolonged pulls with heavy loads. The electric winch is designed for intermittent use only, and should not be used in a constant duty application. Never pull for more than one minute or exceed the rated load. If the winch motor becomes hot to the touch, stop the winch and allow it to cool down for several minutes.
- Never operate winch with less than 5 turns of cable around the winch drum since the cable end may not withstand full load.
- Avoid continuous pulls from extreme angles because this will cause the cable to gather on one end of the drum and damage the cable. Be aware that the winch's line pull capacity is the max line pull of the first layer. Never operate winch pulling a load that exceeds the rated capacity.
- Never hook the cable back to itself because it could damage the cable.
- Be sure the winch is mounted securely on the vehicle or bracket before operation.
- Before moving a load, inspect the cable. Prevent kinks and uneven cable layer before they occur. Apply proper tension to loads under 100lbs.
- Do not move your vehicle to assist the winch in pulling the load. It will be easy to overload, and cause cable damage. Be aware of the danger zone. Keep away from the danger zone during the operation. The danger zone is the area of the winch drum, the fairlead (if fitted), the cable, the pulley block (if used), the hook, and the motor.

WARNING: Check that there are at least five turns of cable remaining on the drum before operation. Ensure the clutch knob is in the engaged position.

- CAUTION:** Clutch must be fully engaged before winching. Never operate the clutch while drum is turning. Do not readjust clutch knob as it has been adjusted and permanently locked in place with a thread-locking compound in the factory.
- Press the "Cable In" button on the handheld switch to re-spool the cable. Press the "Cable Out" button to reverse directions. Wait until the motor stops before reversing directions.
 - Re-spool the cable after completing the operation.

MAINTENANCE

- Periodically check tightness of mounting bolts and electrical connections. Remove all the dirt or corrosion and always keep clean.
- Do not attempt to disassemble the gearbox. Repairs should be done by the manufacturer or authorized repair center.
- The gearbox has been lubricated using high temperature lithium grease in the factory. No internal lubrication is required except when being repaired.

REPLACING THE CABLE

- Engage the clutch by turning the clutch knob to the "locked" position.
- When inserting the cable into the drum, insert it into the correct end of the hole provided. Tighten the screws.
- Operate the winch and re-spool the cable around the drum tightly.

CAUTION: To keep the stated tension, be sure the cable is wrapped on the drum tightly.

WARNING: Always replace damaged cable with manufacturer's identical replacement part.