



1-800-779-2102

Mon – Thurs: 8:00am - 5:00pm | Friday: 8:00am - 4:00pm CST

**INSPECT YOUR PRODUCT FOR DAMAGE & MISSING
PARTS BEFORE PROCEEDING TO INSTALLATION**

PROCEDURE FOR RETURNS OR MISSING HARDWARE

-PLEASE CONTACT THE ORIGINAL POINT OF PURCHASE FOR:
SHIPPING DAMAGE, RETURNS, OR WARRANTY CLAIMS

-CONTACT DEE ZEE DIRECTLY FOR MISSING PARTS OR HARDWARE

WWW.DEEZEE.COM

REGISTER YOUR PRODUCT ONLINE: www.deezee.com/registration

VIEW INSTRUCTIONS ONLINE: www.deezee.com/instructions

⚠️ WARNING: Cancer and Reproductive Harm
www.P65Warnings.ca.gov

Operating, servicing, and maintaining a passenger vehicle can expose you to chemicals such as lead, phthalates, engine exhaust, and carbon monoxide that are known to the State of California cause cancer and birth defects or other reproductive harm. To minimize exposure, service your vehicle and its accessories in a well-vented area and wear gloves or wash your hands frequently.



DEE ZEE, INC. WARRANTY AGREEMENT

Dee Zee, Inc. guarantees the original purchaser a limited lifetime warranty against manufacturer defects in materials, workmanship, and design under normal use, excluding damage resulting from road hazards such as gravel or other debris, product misuse, improper installation, impairments from accidents, product modifications, improper repairs, spills, vandalism, product neglect, or acts of God.

This warranty applies only to the original purchaser of new product(s) and is limited to the replacement of genuine Dee Zee products. Modification of any kind to Dee Zee products voids all warranty coverage. Warranty does not include electrical components, installation, cost of removal, labor, transportation costs, loss of use, inconvenience, or consequential damages.

WARRANTY COVERAGE - MATERIALS & WORKMANSHIP

LIMITED LIFETIME WARRANTY:

- STAINLESS STEEL: Side Steps, Grill Guards, Bull Bars, Bed Caps, and Side Rails
- ALUMINUM: Side Steps, Running Boards, Storage Boxes, Transfer Tanks, Bed Protection, Side Rails, Invis-A-Racks, and Cab Racks
- PLASTIC: Storage Boxes
- OTHER: Front and Rear Bumpers

THREE-YEAR WARRANTY:

- POWDER-COATED / E-COATED STEEL: Side Steps, Running Boards, Storage Boxes, Transfer Tanks, Cab Racks, Sport Bar Ladder Racks, Cargo Carriers, Mounting Brackets (NX, Rough Step, and Bumper Guards only)
- OTHER: Tailgate Assist, Bed Mats, Floor Mats, Auxiliary Fuel Connection Kits, and All Products Not Otherwise Listed Individually

WARRANTY COVERAGE – FINISH PROTECTION

The finish of all Dee Zee products is covered for one-year (1) from the date of purchase. Dee Zee products have a high quality finish that must be cared for and maintained like any other exposed finish on the vehicle. Protect the finish with non-abrasive automotive wax (e.g. Pure Carnauba) on a regular basis. Applying soaps, polishes, or waxes that contain an abrasive compound may scratch the finish and leave the exposed material susceptible to corrosion.

WARRANTY COVERAGE – COMPONENT PARTS

Operational items such as shocks, latches, hinges, and wear items including, but not limited to, mud flaps, step pads, toolbox tray, end caps, hardware, seals, etc. have a one-year (1) warranty. Replacement component parts can be ordered via credit card (MasterCard or VISA) by calling 1-800-779-2102. All replacement parts are non-returnable and non-refundable.

GPI® FUEL PUMPS & ACCESSORIES

All Great Plains Industries (GPI) products, including transfer tank pumps and fuel meters are covered by GPI's warranty policies. Dee Zee's warranty terms do not apply to GPI products. To submit a warranty claim, please contact GPI at 1-800-835-0113 or visit www.gpi.net.

WARRANTY SUBMISSION PROCEDURE

All warranty claims will be initiated at the place of purchase. The original purchaser will be required to present the original sales receipt with purchase date shown and provide photographs of the defect.

In the event the originally purchased product style is no longer available, Dee Zee will warranty the defective part with a current equivalent. If a comparable product is no longer available, the product would be returned to the store of purchase for a refund or the applicable cost difference can be paid to choose an alternate style.

DISCLAIMER

All products are sold as appearance accessories and should not be relied upon as protection for the vehicle or its occupants in the event of an accident. Vehicles equipped with a supplemental restraints system (air bags) deployed by impact and collision avoidance systems should not be modified in any way. Always consult the vehicle manufacturer if you have any questions regarding supplemental restraint systems and sensors.

Buyer must accommodate front and rear sensors during product installation and assumes all risk should these be tampered, rerouted, severed, or disconnected. This includes disabling visual, audio, or vibration alerts into the cab. Buyer assumes all risk and responsibility for wiring any supplemental auxiliary lights.

Buyer assumes all risk, liability, and cost for the installation and use of Dee Zee products. Dee Zee, Inc. assumes no liability for injury, loss, incidental or consequential damages in the event of an accident.



Thank you for choosing Dee Zee to add function and accessorize your vehicle. Dee Zee has been a staple brand in the truck accessory market since 1977 and we hold a reputation of quality manufacturing based in America's Heartland. Our products are born through careful engineering and backed by industry leading warranty programs. We appreciate the opportunity to serve you and your vehicle!

Review the instruction pages in their entirety to prepare the required tools

Warning: Test fit all truck bed rail caps to obtain proper placement before installing this product.

Note: Not all bed rail caps will include or require double sided adhesive tape. Please refer to the instructions to determine if adhesive strips are necessary.

Cleaning: To be entitled to all warranty rights offered with the product, Dee Zee bed rail caps need to be cleaned regularly with a mild detergent. Do NOT use abrasive cleaners. For stainless steel products, the application of a high grade automotive wax is recommended.



Dee Zee Cares - Please Recycle

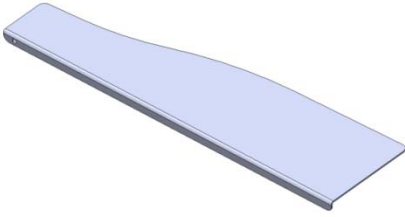
For an electronic version of these instructions visit: www.deezee.com/instructions

Register your product online: www.deezee.com/registration

**DZ 2139/ DZ 2139B/ DZ 29439
(2008 – 2016) Ford Super Duty Truck W/Step**

A Left Tailgate Protector

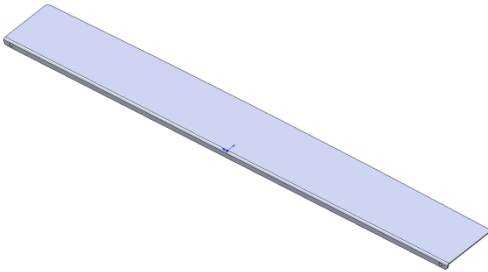
TP 2139-1
TP 2139-1B
TP 29439-1



X1

B Middle Tailgate Protector

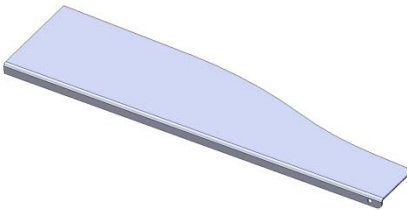
TP 2139-2
TP 2139-2B
TP 29439-2



X1

C Right Tailgate Protector

TP 2139-3
TP 2139-3B
TP 29439-3



X1

D Alcohol Pads



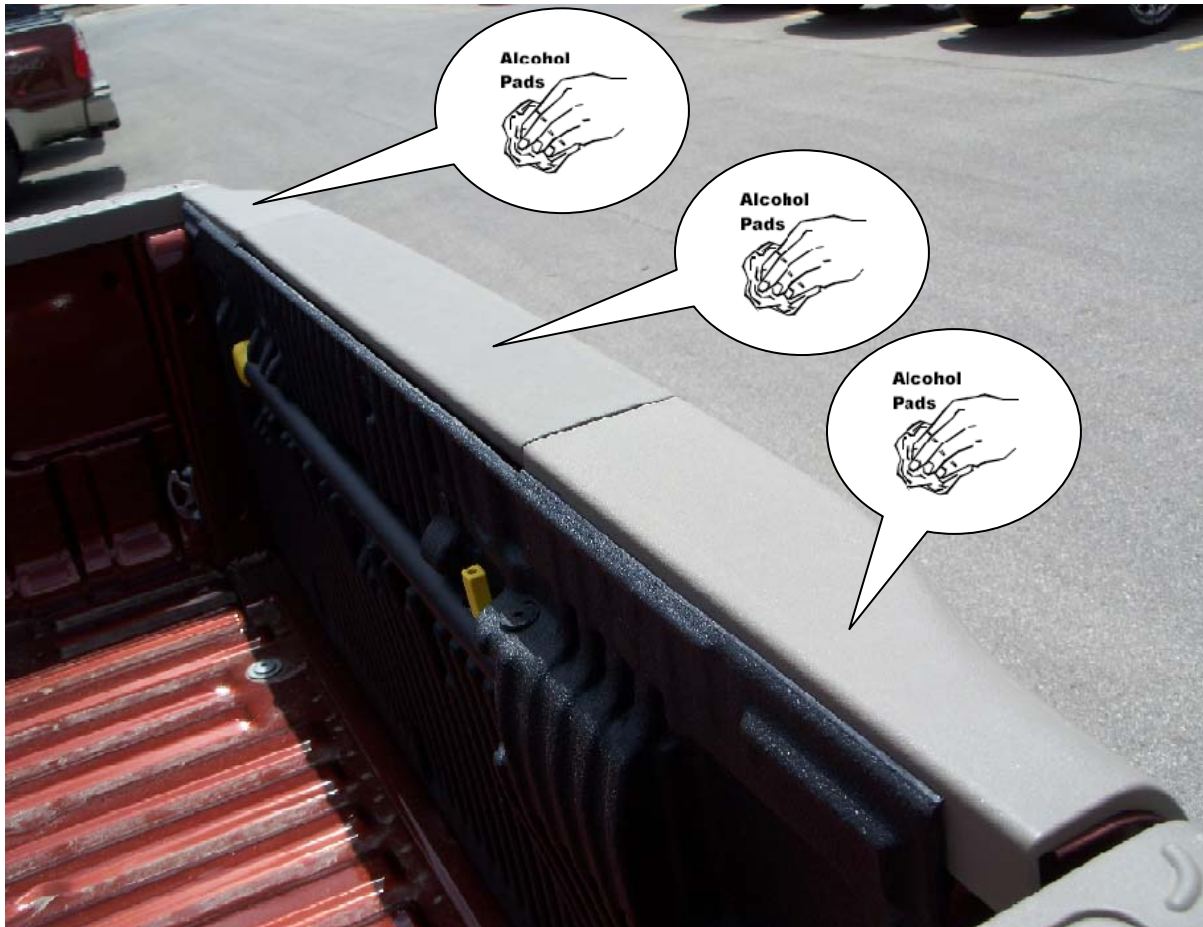
ALPAD

X2

1

Clean the top surface of the truck tailgate before installation in order to remove any dirt, then use the alcohol pads (D) to clean the surface of any further contaminants to promote better adhesion to the truck tailgate surface.

Nettoyer la première surface de l'hayon de camion avant que l'installation pour enlever n'importe quelle terre, alors utiliser les coussins d'alcool (D) nettoyer la surface de n'importe quels plus amples contaminants pour promouvoir la meilleure adhérence à la surface d'hayon de camion.



2

Place the left, middle, and right tailgate protectors (A, B, C) onto the tailgate, but do not remove the tape yet. Get the three tailgate protectors into a position where they fit well and make sure that they don't hang over any gaps where the tailgate may catch when pulled out.

Placer la gauche, le milieu, et les protecteurs d'hayon de droite (UN, LE B, LE C) sur l'hayon, mais ne pas enlever la bande pourtant. Obtenir les trois protecteurs d'hayon dans une position où ils ajustent bien et assurent qu'ils ne remettent pas d'écart où l'hayon peut prendre quand a retiré.



Now that the tailgate protector locations along the vehicle are known take the middle tailgate protector off the tailgate and set it aside. Remove the backing off the tape on the bottom of the middle tailgate protector. Recalling the location of the middle tailgate protector from step 2, line up and slowly lower the middle tailgate protector onto the truck tailgate. Press down firmly onto the middle tailgate protector for 30 seconds to ensure proper adhesion to the plastic bed cap. Using the middle tailgate protector and the locations obtained in step 2 as a guide, repeat step 3 for the left and right tailgate protectors.

Maintenant que les emplacements de protecteur d'hayon le long du véhicule sont connus, enlever le protecteur d'hayon de milieu de l'hayon et mettre il de côté. Enlever le soutien de la bande dessous du protecteur d'hayon de milieu. Rappeler l'emplacement du protecteur d'hayon de milieu de l'étape 2, la ligne et lentement abaisse en haut le protecteur d'hayon de milieu sur l'hayon de camion. Appuyer sur fermement sur le protecteur d'hayon de milieu pour de 30 seconde pour garantir l'adhérence correcte à la casquette de lit en plastique. L'utilisation du protecteur d'hayon de milieu et les emplacements ont obtenu dans l'étape 2 comme un guide, répéter l'étape 3 pour la gauche et la droite suivent de trop près des protecteurs.