



48483671  
Edition 9  
October 2023

## Air Die Grinder

5100MAX Series, 5100MAX-M Series, 5208MAX,  
and 5208MAX-M

---

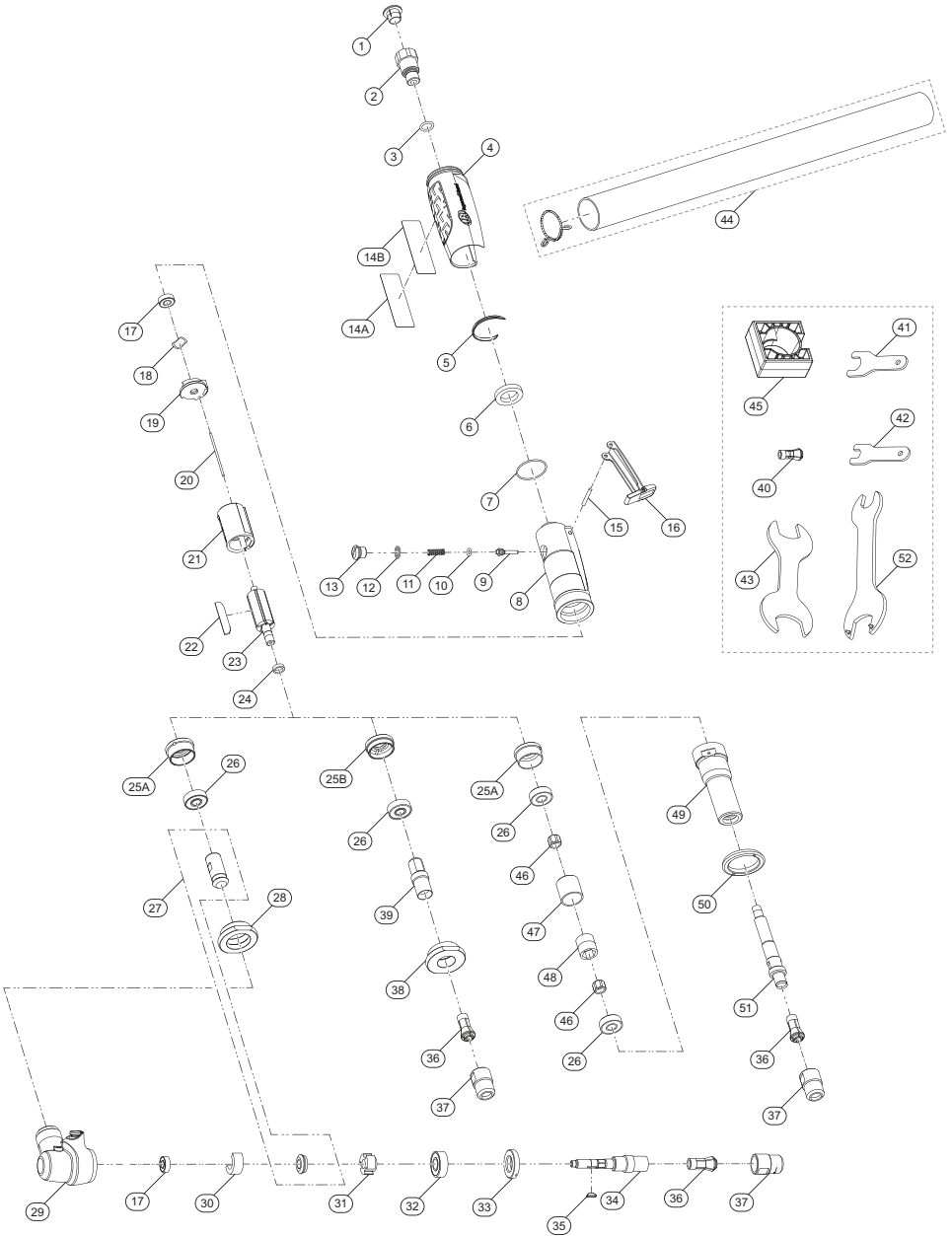
# Parts Information



Save These Instructions

 **Ingersoll Rand**<sup>®</sup>

5100MAX Series, 5100MAX-M Series, 5208MAX, and 5208MAX-M Air Die Grinder - Exploded View



(Dwg. TP2233-2)

**5100MAX Series, 5100MAX-M Series, 5208MAX, and 5208MAX-M Air Die Grinder - Parts List**

<b>Item</b>	<b>Part Description</b>	<b>Part Number (CCN)</b>
1	Plastic Plug	PF-PLUG (22030159)
2	Inlet Bushing Assembly	5108MAX-A565 (48490080)
*	Inlet Bushing	---
	Inlet Screen	---
3	O-Ring	170-283 (22030654)
4	Sleeve	5108MAX-747 (48378228)
5	Gasket	5108MAX-223 (48483531)
6	Muffler	5108MAX-311A (48483556)
7	O-Ring	RG1-216 (45727849)
8	Housing Assembly (for 5102MAX, 5108MAX, and 5208MAX)	RG1-A40-25K (45756558)
	Housing Assembly (for 5104MAX and 5107MAX)	RG1-A40-30K (45756590)
	Housing Assembly (for 5106MAX)	RG1-A40-35K (45756616)
9	Throttle Valve	5108MAX-302 (48496293)
10	Throttle Valve Seal	5108MAX-94 (48496301)
11	Spring	RG1-51 (80238967)
12	O-Ring	RG1-206 (80238876)
13	Valve Plug	RG1-266 (80227200)
14A	Tool Label (for 5102MAX)	5102MAX-301
	Tool Label (for 5102MAX-M)	5102MAX-M-301
	Tool Label (for 5104MAX)	5104MAX-301
	Tool Label (for 5104MAX-M)	5104MAX-M-301
14B	Tool Label (for 5106MAX)	5106MAX-301
	Tool Label (for 5106MAX-M)	5106MAX-M-301
	Tool Label (for 5107MAX)	5107MAX-301
	Tool Label (for 5107MAX-M)	5107MAX-M-301
	Tool Label (for 5108MAX)	5108MAX-301
	Tool Label (for 5108MAX-M)	5108MAX-M-301
	Tool Label (for 5208MAX)	5208MAX-301
	Tool Label (for 5208MAX-M)	5208MAX-M-301
15	Pin	RG1-120 (45727955)
16	Lever Assembly	RG1-A400 (45756103)
*	Lever (stamp)	---
	Lever Lock	---
	Roll Pin	---
	Spring	---
17	Bearing	RG1-22 (45750312)
18	Wave Spring	RG1-278 (45758000)
19	Rear Endplate	RG1-12 (80222532)
20	Dowel Pin (for 5102MAX, 5108MAX, and 5208MAX)	RG1-56L (45752292)
	Dowel Pin (for 5104MAX, 5106MAX, and 5107MAX)	RG1-56 (45752284)
21	Long Cylinder (for 5102MAX, 5108MAX, and 5208MAX)	RG1-3L (45758018)
	Cylinder (for 5104MAX and 5107MAX)	RG1-3 (80223076)
22	Vane (for 5102MAX, 5108MAX, and 5208MAX) (set of 5)	RG1-42L-LF-5 (48490098)
	Vane (for 5104MAX and 5107MAX) (set of 4)	TP-5107-042-4
	Vane (for 5106MAX) (set of 3)	TP-5106-042-3

Item	Part Description	Part Number (CCN)
23	Rotor (for 5102MAX, 5108MAX, and 5208MAX)	RG1-53L-5 (80238850)
	Rotor (for 5104MAX and 5107MAX)	RG1-53-4 (80223050)
	Rotor (for 5106MAX)	RG1-53-3 (80238918)
24	Spacer	RG1-448 (45736113)
25A	Front Endplate (for 5102MAX, 5104MAX, and 5208MAX)	RG1-11A (80222862)
25B	Front Endplate (for 5106MAX, 5107MAX, and 5108MAX)	RG1-11 (45758026)
26	Bearing	301-24 (04552352)
27	Gear Pinion Set (for 5102MAX)	5102MAX-A552-1.25
*	Pinion	---
	Gear	---
27	Gear Pinion Set (for 5104MAX)	5104MAX-A552-2.08
*	Pinion	---
	Gear	---
28	Clamp Nut (for 5102MAX and 5104MAX)	5102MAX-27A (46816781)
29	Angle Housing Assembly (for 5102MAX and 5104MAX)	5102MAX-A550 (48490106)
*	Angle Housing	---
	Grease Fitting	---
	Locking Pin	---
	Bushing	---
	Spring	---
	O-Ring	---
30	Wick (for 5102MAX and 5104MAX)	RG1-560-1.25 (45742095)
31	Hub (for 5102MAX and 5104MAX)	HG1-108 (47128806)
32	Bearing (for 5102MAX and 5104MAX)	5102MAX-24 (46817623)
33	Cap (for 5102MAX and 5104MAX)	5102MAX-531 (46817649)
34	Collet Arbor (for 5102MAX and 5104MAX)	5102MAX-591A (46816682)
35	Pinion Key (for 5102MAX and 5104MAX)	301-579 (04552576)
36	Collet, 1/4in.	301-700 (04552600)
37	Collet Nut	301-699 (04552592)
38	Clamp Nut (for 5106MAX, 5107MAX, and 5108MAX)	5108MAX-306 (48378269)
39	Collet Body (for 5106MAX, 5107MAX, and 5108MAX)	5108MAX-290 (46816708)
40	Collet, 6mm	301-700B (80128952)
41	Collet Nut Wrench	301-69B (80102619)
42	Collet Body Wrench	301-69A (80102601)
43	Clamp Nut Wrench	5108MAX-26 (46818399)
44	Piped Away Exhaust Kit	5108MAX-K284 (46818407)
*	Spring	---
	Pipe	---
45	Clamp Block	5108MAX-598
46	Bearing Nut	RG1-85 (45731106)
47	Clamp Sleeve	RG1-276 (45758034)
48	Arbor Coupling	RG1-304 (45731114)
49	Extended Housing Assembly	RG1-A20-3A (45756814)
*	Extension Housing	---
	Needle Bearing	---
50	Housing Nut	RG1-306A (80226764)
51	Collet Arbor	TP-5208-104
52	Wrench	RG1-26 (80236201)

\* Indicates not illustrated.

---

## **Parts and Maintenance**

When tool life has expired, it is recommended that the tool be disassembled, degreased and parts separated by material for proper recycling.

Tool repair and maintenance should only be carried out by an Authorized Service Center.

Refer all communications to the nearest **Ingersoll Rand** office or distributor.

---

## **Related Documentation**

Manuals can be downloaded from [ingersollrand.com](http://ingersollrand.com)

For additional information, refer to:

Product Safety Information Manual 04580288

Product Information Manual 48483697

Declaration of Conformity 48483697003

---

**Notes:**

**Notes:**

---

[ingersollrand.com](https://www.ingersollrand.com)

© 2023 *Ingersoll Rand*

