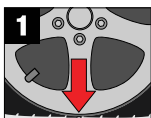


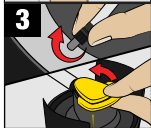
DIRECTIONS FOR USE (READ WARNINGS BEFORE USE):



1 Rotate puncture to 6 o'clock position, if possible.



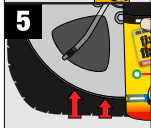
2 Shake can **VIGOROUSLY** for 30 seconds.



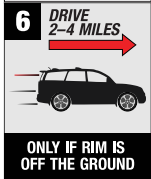
3 Tightly twist hose onto valve. Remove safety tab.



4 Hold can upright and press yellow button down. **DO NOT SHAKE CAN WHILE DISPENSING.**



5 Depress button and hold until sealant stops flowing.**



6 Make sure tire rim is lifted off of the ground. If NOT, add tire pressure. Immediately drive 2-4 miles to allow tire pressure to increase. If needed, inflate to manufacturer's recommended pressure.

Have tire repaired by tire professional within 3 days or 100 miles.

WARNING: CONTENTS UNDER PRESSURE.

- Contains glycerol and hydrofluoroolefin propellant.
- Use only outdoors in a well-ventilated area.
- **Wear protective eyewear during use (safety goggles, eyeglasses, sunglasses, etc.).**
- **DO NOT** use if any portion of this product is dented or damaged.
- **DO NOT** puncture or incinerate container.
- **DO NOT** expose to heat, open flame, direct sunlight or store at or above 120°F (49 °C). Exposure to heat may cause can to rupture.
- **DO NOT STORE IN INTERIOR OF CAR (INCLUDING GLOVE COMPARTMENT AND INSIDE HATCHBACKS). TEMPERATURES INSIDE CAR CAN EXCEED 120°F (49°C). STORE OUTSIDE PASSENGER AREA OF CAR SECURED IN SPARE TIRE WELL OR TRUNK.**
- **DO NOT** use with any other sealants.
- **DO NOT** use on motorcycle or bicycle tires; failure could cause loss of control.
- If using "Z-rated" tires be sure to check tire pressure before driving.
- **Never weld on a rim. Welding on a rim with the tire mounted could cause the tire to explode regardless of whether tire inflator is used. Welded and repaired rims are unsafe.**
- **KEEP OUT OF REACH OF CHILDREN.**

FIRST AID: If inhaled, seek fresh air. If on skin, wash thoroughly with soap and water. If in eyes, flush with plenty of water for 15 minutes. For any persistent or severe symptoms, including rash, call a physician. If swallowed, do not induce vomiting. Call a physician or poison control center immediately.
FOR HEALTH EMERGENCY CALL: ChemTel, Inc. 1-800-255-3924

NOTE: Fix-a-Flat® provides a quick emergency repair. Fix-a-Flat will not repair sidewall or severe damage, cracks in wheels or rim leaks. If tire does not lift off ground after product use have tire repaired immediately. Treated tires should be repaired by a qualified tire professional as stated to ensure safety. Notify professional of Fix-a-Flat use and request tire and TPMS cleaning and repair. If temperature is below 32°F/0°C, warm can using vehicle interior heater before use.