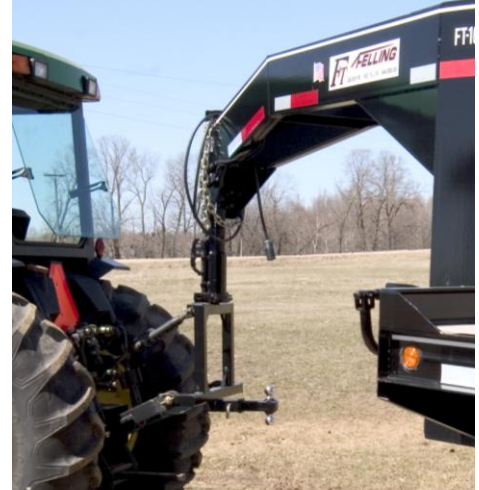




3-PT. HITCH OWNER'S MANUAL

Item # FTF-02TQH



WARNING:

Read carefully and understand all **INSTRUCTIONS** before operating. Failure to follow the safety rules and other basic information may result in personal injury.

INTENDED USE

Cuts time in half when moving trailers. Makes moving a trailer a one-person job. Great visibility when backing up trailers. Never leave the tractor to move any style trailer.

TECHNICAL SPECIFICATIONS

Hitch Receiver:	2" ball mount (not included)	Fits Tractor Category:	Cat 1 with 3-pt. hitch
Hitch Ball:	2-5/16" welded on	Frame construction:	Heavy duty 2" square

GENERAL SAFETY RULES

- **Keep children and bystanders** away while operating a tractor. Distractions can cause you to lose control, so visitors should remain at a safe distance from the work area.
- **Stay alert**, watch what you are doing and use common sense when moving a trailer. Do not use this product while you are tired or under the influence of drugs, alcohol or medication. A moment of inattention while operating a tractor may result in serious personal injury.
- **Dress properly.** Do not wear loose clothing, dangling objects, or jewelry. Keep your hair, clothing and gloves away from moving parts. Loose clothes, jewelry or long hair can be caught in moving parts.
- **Use safety apparel and equipment.** Use non-skid safety shoes, hardhat, gloves, dust collection systems, and hearing protection when appropriate.

3-PT HITCH USE AND CARE

1. Mount the Frame of the 3-Pt. Hitch to the hitch arms on your tractor. Be sure to have hitch secured to the tractor. Pins not included.

WARNING

1. Always check for damaged or worn out parts before each use. Broken parts will affect the 3-pt. hitch operation. Replace or repair damaged or worn parts immediately.
2. Distribute the load evenly. Uneven loads may cause the trailer to tip, resulting in personal injury to the operator or others.
3. Keep the trailer bed level while moving.
4. Use the 3-pt.hitch on flat and level surfaces capable of supporting the maximum load. Pulling or pushing a load on a slanted or uneven surface can result in loss of control.
5. Do not modify this 3-pt. hitch. There are specific applications for which this hitch was designed.
6. Always use safety chains when moving a trailer.
7. Make sure the hitch is secure before each use.

For technical questions, please call 218-943-6290.

WARRANTY: One-year Limited Parts Warranty



PO Box 155

Miltona, MN 56354

TEL: 218-943-6290

Made in China