

Tail Gate Feeder Assembly Instructions

Figure 3

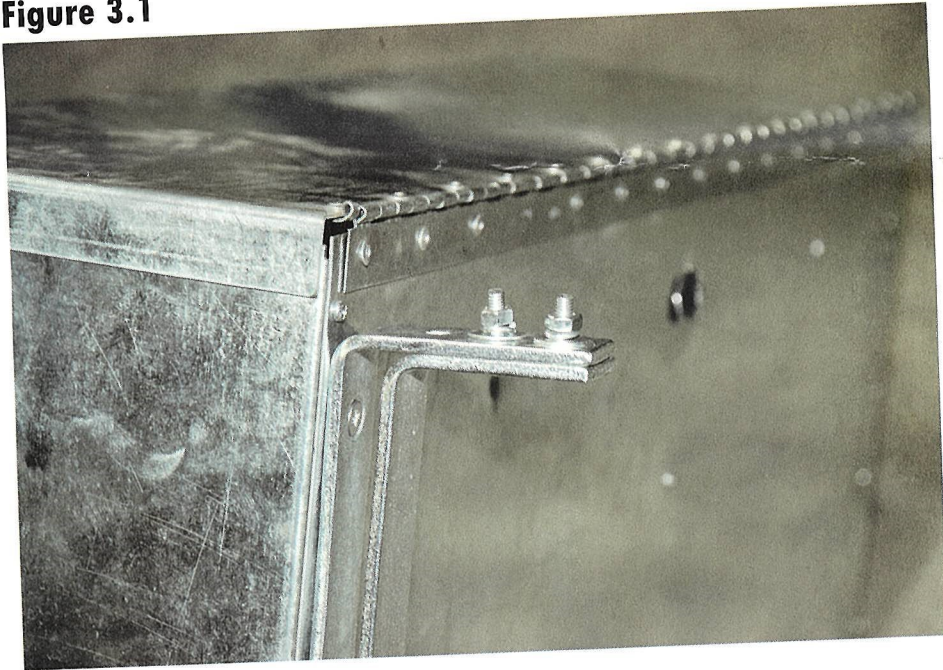


Step 3:

Attach Hook Bar (Item 5) to Bracket (Item 3) using 2 Bolt, Washer, Lock Washer and Nut Sets (Item 2).

The Hook Bar (Item 5) can be attached in a variety of positions to fit your needs.

Figure 3.1



Step 4:

Using the provided control cord, connect end to 12 volt motor, and the other end of the power source.