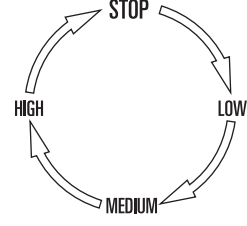


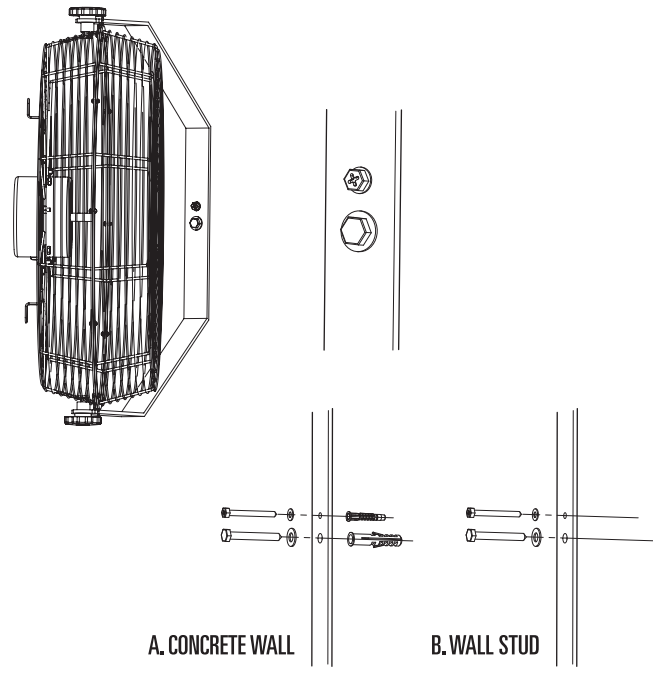
OPERATING INSTRUCTIONS

- ADJUST THE DESIRED SPEED BY PULL CHAIN SWITCH WITH 3 SPEEDS CONTROL.
0 - STOP 1 - LOW 2 - MEDIUM 3 - HIGH
- TILT OR DOWN THE FAN HEAD FOR CHANGING AIR FLOW DIRECTION.



WALL MOUNT ASSEMBLY INSTRUCTION

- MARK THE DESIRED HOLE LOCATIONS BY USING THE WALL BRACKET, AND THEN DRILL HOLES.
- FOR CONCRETE WALL INSTALLATION, AFTER DRILLING, INSERT THE WALL ANCHORS AND TAP THEM FLUSH WITH THE WALL, POSITION THE BRACKET AND THEN SCREW THE TWO BOLTS INTO THE ANCHORS, SECURELY ATTACHING TO THE WALL.
- FOR WALL STUD INSTALLATION, AFTER DRILLING THE SMALLER DIAMETER PILOT HOLE, POSITION THE BRACKET AND SCREW THE TWO BOLTS INTO THE WALL UNTIL THEY ARE SECURED.



CAUTION: THE FAN IS ONLY SUITABLE FOR CONCRETE WALL AND WALL STUD. DO NOT USE FOR DRY WALL MOUNTING. USE THE MOUNTING ACCESSORIES SHIPPED WITH PRODUCTS FOR WALL MOUNTING.

NOTE: FOR LONGER PARTS LIFE, AFTER 10 HOURS OF CONTINUOUS OPERATION, TURN FAN OFF FOR 15 MINUTES TO ALLOW MOTOR TO COOL.

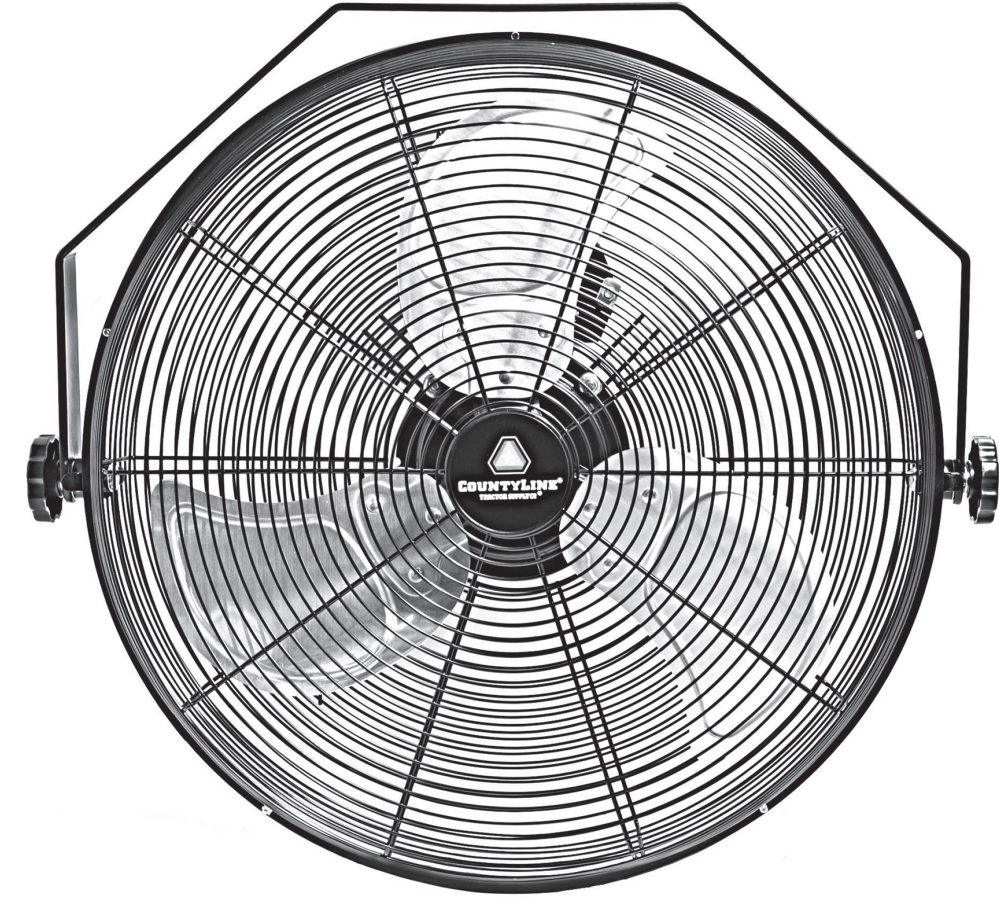
TROUBLESHOOTING GUIDE

PROBLEM	POSSIBLE CAUSE	CORRECTIVE ACTION
THE FAN FAILS TO OPERATE	1. FAN MAY NOT BE PLUGGED IN.	1. MAKE SURE THE FAN IS PLUGGED IN AND ELECTRICAL OUTLET IS WORKING PROPERLY.
	2. SOMETHING MAY BE OBSTRUCTING THE FAN.	2. CHECK FOR ANY OBSTRUCTION. IF YOU FIND AN OBSTRUCTION, TURN THE FAN "OFF". UNPLUG THE FAN AND CAREFULLY REMOVE THE OBSTRUCTION. PLUG THE FAN IN AND TURN IT ON AGAIN, REFERRING TO THE OPERATION INSTRUCTIONS.

TECHNICAL DATA

MODEL NO.	BLADE DIA. SIZE	VOL./ Hz	SPEED	INPUT POWER
SFE-500/45W-B	18 IN./450MM	AC 120V /60 Hz	HIGH	124W
			MEDIUM	110W
			LOW	100W

USER MANUAL AND OPERATING INSTRUCTIONS



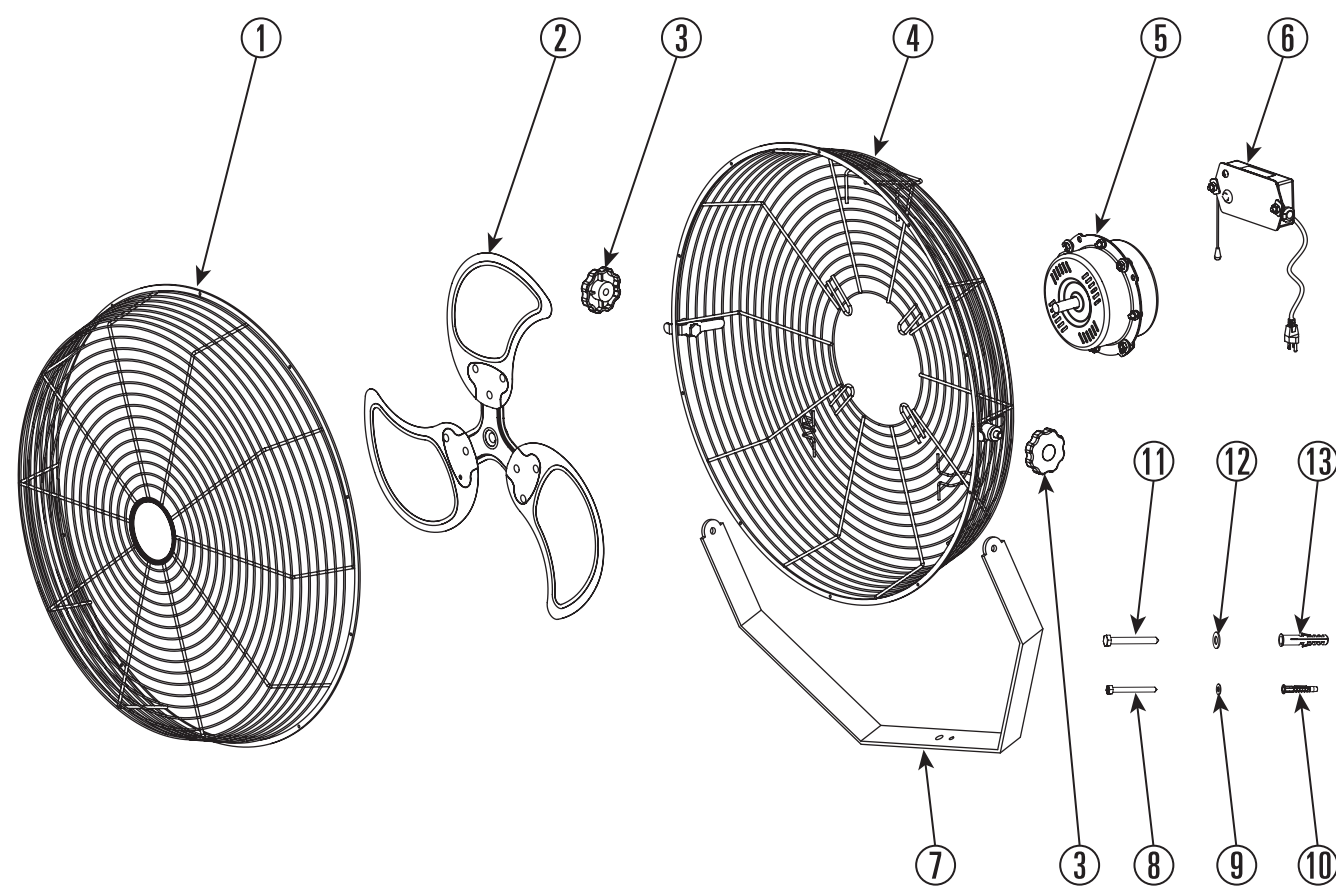
18 in. WALL MOUNTED BARN FAN

SKU NO.: 1025507 MODEL NO.: SFE-500/45W-B

READ AND SAVE THESE INSTRUCTIONS FOR FUTURE USE

IMPORTANT: READ ALL INSTRUCTIONS CAREFULLY BEFORE ASSEMBLY, SERVICE OR USE OF THIS FAN. FAILURE TO COMPLY WITH THESE INSTRUCTIONS COULD RESULT IN SERIOUS PERSONAL INJURY AND/OR PROPERTY DAMAGE.

Distributed by:
TRACTOR SUPPLY COMPANY
5401 VIRGINIA WAY,
BRENTWOOD, TN 37027
For customer support, call:
1-888-376-9601
www.TractorSupply.com
MADE IN CHINA



PACKAGE CONTENTS

PART	DESCRIPTION	QUANTITY
1	FRONT GUARD	1
2	BLADE	1
3	KNOB	2
4	REAR GUARD	1
5	MOTOR	1
6	SWITCH BOX WITH CABLE	1
7	WALL BRACKET	1
8	SCREW ST 5.9 X 60	1
9	WASHER $\phi 6$ X $\phi 16$	1
10	WALL ANCHOR $\phi 8$ X 60	1
11	SCREW ST 9.5 X 65	1
12	WASHER $\phi 10$ X $\phi 20$	1
13	WALL ANCHOR $\phi 12$ X 60	1

SAFETY INFORMATION

WARNING:

- THIS UNIT IS DESIGNED FOR INDOOR USE ONLY. DO NOT EXPOSE TO ELEMENTS OR ALLOW TO BECOME WET.
- TO GUARD AGAINST ELECTRIC SHOCK WHILE OPERATING, DO NOT ALLOW FAN TO COME IN CONTACT WITH OTHER GROUNDED OBJECTS SUCH AS PIPES, RADIATORS, ETC.
- TO REDUCE THE RISK OF ELECTRICAL SHOCK, DO NOT USE WITH AN SOLID STATE SPEED CONTROL DEVICE.
- DO NOT USE TO EXHAUST HAZARDOUS CHEMICALS OR USE NEAR ANY FLAMMABLE LIQUIDS OR GASES AS SPARKS FROM MOTOR MAY IGNITE FUMES.
- TURN OFF UNPLUG UNIT, AND WAIT FOR FAN TO STOP BEFORE MOVING, STORING, AND/OR CHANGING OPERATING LOCATIONS.
- DO NOT INSERT YOUR HAND OR OTHER OBJECTS INTO THE GUARD OR THE MOVABLE PARTS.
- BEFORE OPERATING ALWAYS CHECK FAN FOR LOOSE OR DAMAGED PARTS. INSPECT POWER CORD FOR ANY DAMAGE. NEVER USE FAN IF ANY PARTS ARE DAMAGED OR MISSING. NEVER USE FAN WITHOUT SAFETY GUARDS ATTACHED.
- WHEN USED WITH AN EXTENSION CORD, USE ONLY CORD OF PROPER SIZE (AMP RATING), UL LISTED, AND WITH RECEPTACLE TO ACCEPT THREE PRONG GROUNDED PLUG FURNISHED ON THE FAN'S POWER CORD. ALWAYS KEEP POWER CORD AND EXTENSION CORDS AWAY FROM HEAT, OIL, AND SHARP EDGES. INSPECT CORDS PERIODICALLY AND REPLACE IF DAMAGED.
- DISCONNECT FAN FROM POWER SOURCE WHEN NOT IN USE, BEFORE SERVICING AND WHEN CLEANING OR REPAIRING.
- REPAIR OF THIS APPLIANCE SHOULD BE DONE BY A QUALIFIED ELECTRICIAN.
- IN CASE OF POWER FAILURE, TURN FAN OFF AT POWER KNOB OR CHAIN TO PREVENT UNEXPECTED RESTARTING AND COMPONENT DAMAGE.
- KEEP CHILDREN AWAY FROM FAN AT ALL TIMES.
- DO NOT USE HIGH PRESSURE HOSE TO SPRAY THE FAN FOR CLEANING.
- DO NOT OPERATE ANY FAN WITH A DAMAGED CORD OR PLUG. DISCARD FAN OR RETURN TO AN AUTHORIZED SERVICE FACILITY FOR EXAMINATION AND/OR REPAIR.
- DO NOT RUN CORD UNDER CARPETING. DO NOT COVER CORD WITH THROW RUGS, RUNNERS, OR SIMILAR COVERINGS. DO NOT ROUTE CORD UNDER FURNITURE OR APPLIANCES. PLEASE ARRANGE CORD AWAY FROM TRAFFIC AREA AND WHERE IT WILL NOT BE TRIPPED OVER.

CAUTION:

- PRIOR TO CLEANING, UNPLUG THE FAN FROM THE SOCKET.
- DO NOT IMMERSE THE FAN IN WATER.
- FIT THE GUARD ONTO FAN BEFORE STARTING UP THE FAN.
- SUPERVISE CHILDREN TO ENSURE THEY DO NOT PLAY WITH THE FAN.

CARE AND MAINTENANCE

UNPLUG THE APPLIANCE BEFORE CLEANING. DON'T USE ANY WATER FOR CLEANING METAL SURFACES. SLIGHTLY MOISTEN A CLOTH AND THEN WIPE OFF THE SURFACES OF THE FAN. IN ORDER TO REMOVE THE DUST FROM THE PROTECTIVE GUARD, USE A VACUUM CLEANER OR REMOVE THE FRONT PROTECTIVE GUARD BY REMOVING THE SECURING SCREW ON THE EDGE OF THE GUARD WITH A SCREWDRIVER. AFTER CLEANING, REMOUNT THE SAFETY GUARD. AFTER DOING THIS, FASTEN THE SECURING SCREW ON THE EDGE OF THE PROTECTIVE GUARD.

SAVE THESE INSTRUCTIONS

	ITEM NUMBER:	1025507
	DESCRIPTION:	18in Wall Mounted Barn Fan
	INSTRUCTION MANUAL SIZE:	420mm(W) x 297mm(H)
	COLOR:	1C + 1C
	MATERIAL:	80gsm Woodfree Paper (80磅書紙)
	FINISHING:	NIL
	DATE:	Dec 18, 2013
	VERSION:	1.2
	RELEASED DATE:	Dec 19, 2013
	CMYK <input type="checkbox"/> <input type="checkbox"/> <input type="checkbox"/> <input checked="" type="checkbox"/>	
PANTONE <input type="checkbox"/> --- <input type="checkbox"/> --- <input type="checkbox"/> --- <input type="checkbox"/> ---		