



10ft. x 10ft. Kennel Cover & Roof Kit

Model#: OTKK10X10GB

2 Year Pro-Rated Limited Warranty

Polytuf Brands, Inc. ("PBI"), warrants this Out-Tech product (Cover and Frame) to be free of defects in material and workmanship for a period of two (2) years from the date of purchase by its first retail purchaser. Please complete the included Out-Tech registration card, and send it along with a copy of the retail receipt (be sure to keep copies of both for your records) to the address below within 30 days of your purchase. Failure to do so may result in PBI having to charge you full retail pricing for any repairs, replacements, or adjustments, even during the warranty period. At its election, PBI will repair, replace (with new or remanufactured parts) or make appropriate adjustments to any portion of the product covered by this pro-rated limited warranty during the warranty period. The repairs, replacement, or adjustments noted in the preceding sentence will be without charge to you if you notify PBI of a defect in writing within the first twelve (12) months from the date of purchase. If you notify PBI of a defect in writing after twelve (12) months from the date of purchase, but before the expiration of this pro-rated limited warranty, PBI will provide you with the repair, replacement, or adjustment, at 40% off the then-current retail price. OUT-TECH Shelters must be properly assembled and securely anchored. PBI shall have no obligation whatsoever to repair, replace, adjust or otherwise compensate purchaser if this OUT-TECH shelter was modified in any way, improperly assembled or anchored, or sustains damage and malfunctions as a result of misuse, abuse, negligence, accident, a lack of proper maintenance, impact by foreign objects, hail, tornado, hurricane, any and all other violent storms, flood, fire, pollutants, chemical, acts of God and other causes beyond PBI's control. If you wish to make a claim under this pro-rated limited warranty, send written notice of your claim to:

POLYTUF BRANDS, Inc.
Attn: OUT-TECH Customer Service Department
P.O. Box 3079
Cuyahoga Falls, OH 44223-9998, USA

or by calling 1-877-770-0184 from within the USA; 1-330-773-0184 FROM CANADA or MEXICO.

Include your return address, a copy of the original invoice or other proof of purchase, plus a description and photographs of the claimed defect. In the event that PBI requires you to return any portion of the Out-Tech product, PBI will provide you with a RMA (Return Merchandise Authorization) number and specific instructions for shipping back to PBI (including carton marking instructions). You will be responsible for all shipping & handling charges when sending product to PBI. If the product is covered under this warranty, PBI will be responsible for return shipping and handling charges associated with the repair, replacement, or adjustment (mode of return service to be determined in PBI's sole discretion). Do not send any product back to PBI unless you have received an RMA number from PBI. PBI will refuse any shipment that is not correctly marked with a valid PBI RMA number, and the carrier will return it to you at your expense. ALL IMPLIED WARRANTIES, INCLUDING BUT NOT LIMITED TO IMPLIED WARRANTIES OF MERCHANTABILITY AND FITNESS FOR PARTICULAR PURPOSE, ARE LIMITED IN DURATION TO ONE (1) YEAR FROM THE DATE OF PURCHASE. Except as indicated above, this warranty is given in lieu of all other warranties, liabilities, and obligations of PBI. PBI WILL NOT HAVE OTHER OR GREATER LIABILITY FOR DEFECTS IN THE PRODUCT, NOR WILL PBI HAVE ANY LIABILITY FOR INCIDENTAL, SPECIAL, OR CONSEQUENTIAL DAMAGES OF ANY KIND WHETHER FOR BREACH OF ANY EXPRESS WRITTEN OR ORAL OR IMPLIED WARRANTY ON PRODUCTS, BREACH OF CONTRACT, NEGLIGENCE, MISREPRESENTATION, OR OTHERWISE, AND WHETHER RESULTING IN LOST PROFITS, LOSS OF INVESTMENT OR INTEREST ON INVESTMENT, WORK STOPPAGE, OR OTHERWISE. YOUR EXCLUSIVE REMEDY SHALL BE ENFORCEMENT OF THIS WARRANTY UPON THE TERMS AND CONDITIONS HEREIN CONTAINED. NO REPRESENTATIVE OF PBI OR ITS DISTRIBUTORS OR DEALERS IS AUTHORIZED TO MAKE ANY CHANGE OR MODIFICATION TO THIS WARRANTY. Some states/provinces do not allow the exclusion or limitation of incidental or consequential damages, so the above limitations and exclusions may not apply to you. This warranty gives you specific legal rights. You may also have other rights which vary from state/province to state/province.

WARNING:

KEEP ALL FLAME AND HEAT SOURCES AWAY FROM THIS COVER FABRIC. This canopy cover is made with flame resistant fabric which meets CPAI-84. **IT IS NOT FIREPROOF.** The fabric will burn if left in continuous contact with any flame source. The application of any foreign substance to the canopy cover may render the flame resistant properties ineffective. This product is not rated for snow load.

Complete, detach & mail the form below to: **POLYTUF BRANDS, Inc., P.O. Box 3079, Cuyahoga Falls, OH 44223-999.** Note: return this form within 30 days from date of purchase to qualify for the 2 Year Limited Warranty. This information will not be sold or shared.



2 Year Pro-Rated Limited Warranty Mail-In Registration Form

First Name: _____ Last Name: _____
 Address: _____ Apt. No: _____
 City: _____ State/Province:Postal Code: _____
 Phone: _____
 OUT-TECH Product Name: **10ft. x 10ft. Pet Kennel Roof & Cover Kit** Model Number: **OTKK10X10GR**
 Date of Purchase: _____ Purchased From: _____
 Intended Use: _____

In order to provide better service for you in the future, what additional products and accessories do you recommend for the OUT-TECH line of products? _____

From where would you prefer to purchase OUT-TECH products? _____

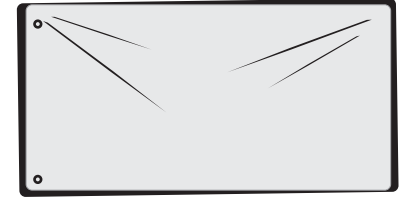
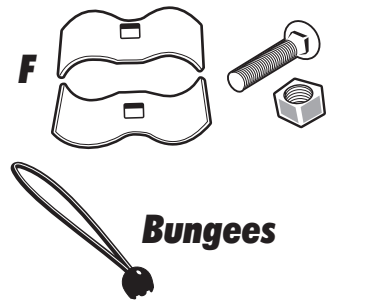
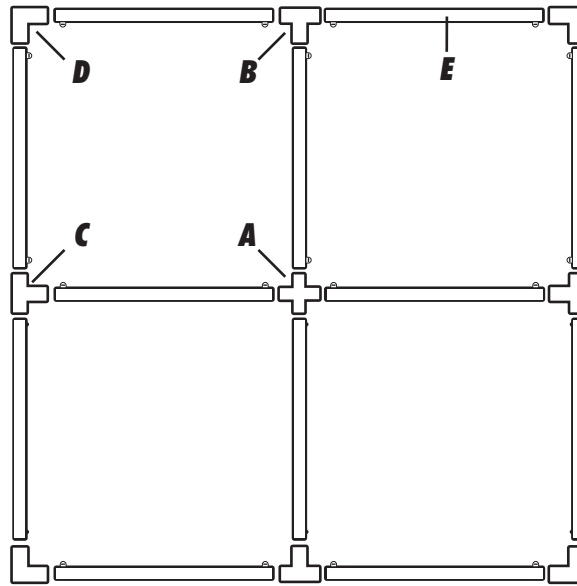


Model#: OTKK10X10GB

COVER & ROOF KIT

Hardware List:

- "A" - 4-way angled connector = 1 pc
 - "B" - 3-way connector = 2 pcs
 - "C" - 3-way angled connector = 2 pcs
 - "D" - Corner connector = 4 pcs
 - "E" - Frame Tube = 12 pcs
 - "F" - Clamps = 6 sets (2 pcs each)
 - "G" - Carriage Bolts w/nuts = 6
 - "H" - Bungees = 20
 - "I" - Snap Buttons = 20
- 9/16" Socket or wrench required - not included*

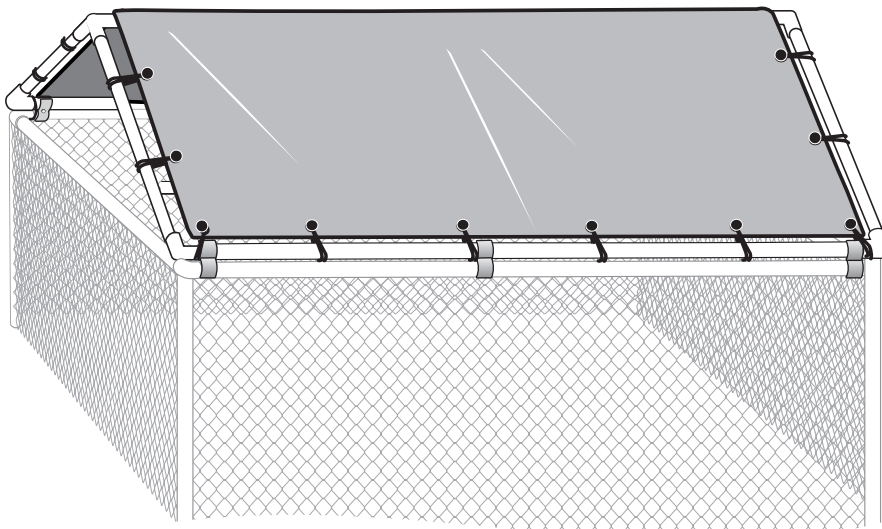
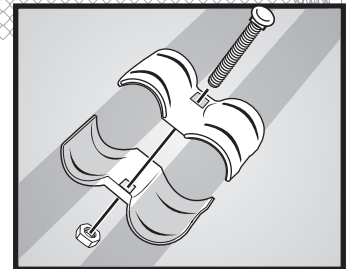
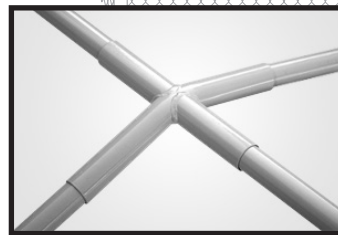
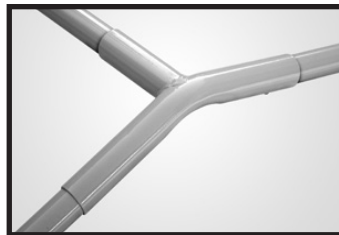
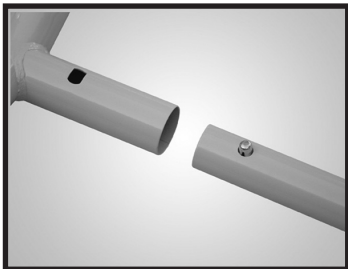
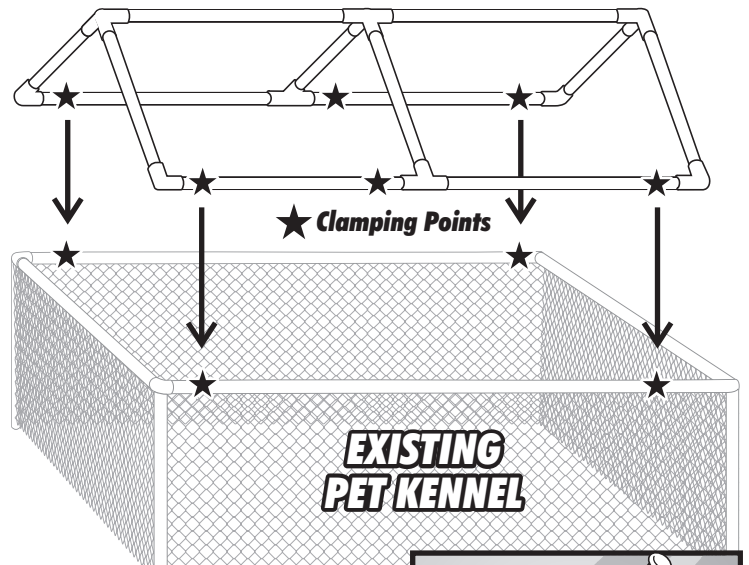


Cover

Installation:

- Insert snap buttons into frame tubes
- Assemble frame on the ground
- Place cover over roof frame and secure to frame w/ball bungees.
- Loosely connect clamps to kennel frame
- With 2 or more people, lift roof frame on top of kennel and attach with clamps - "F".
- Once frame & cover is in place, fully tighten clamps.

Anchors strongly recommended.



Distributed by:
Polytuf Brands, Inc.
 P.O. Box 3079
 Cuyahoga Falls, OH 44223
 Phone: (330) 773-0184
 (888) 765-9883
 Fax: (330) 773-0390
 e-mail: sales@polytuf.com