



PRO SERIES 8 Cubic Feet

MEGA-LOAD WHEELBARROW

INSTRUCTION MANUAL

1006402



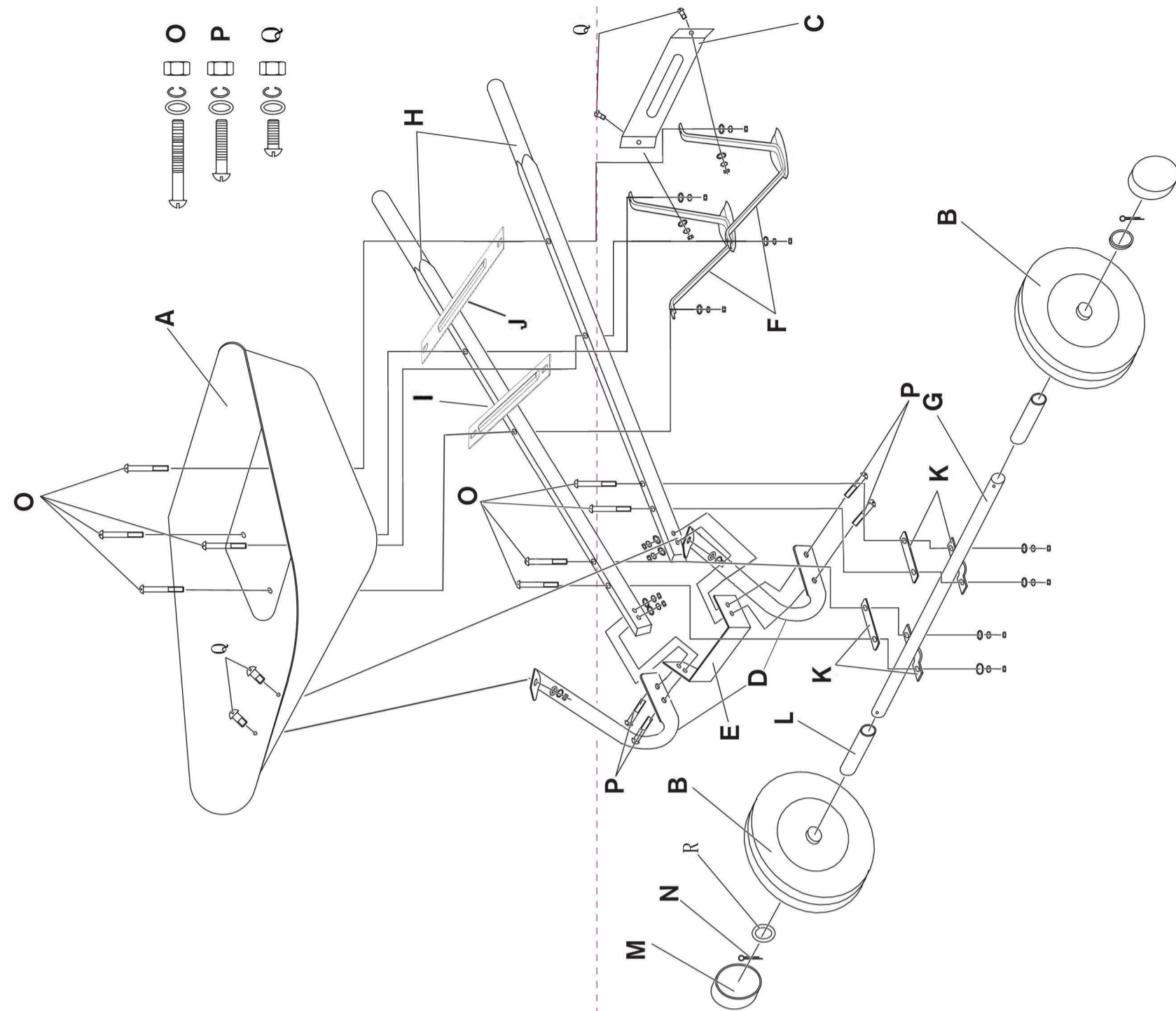
Max. carry capacity for light goods: 8 cu. ft. / 0.22 cu. m.
Max. carry capacity for loading: 600 lb / 270 kg
Max. carry capacity for liquid: 158 qt / 150 l

CAUTION: Never inflate tire above 30 PSI (206 Kpa).

IMPORTANT INFORMATION:

Read all instructions prior to assembly.
For ease of assembly, it is recommended that 2 people assemble the wheelbarrow.
Prior to assembly, lay out all parts on a flat, non-abrasive surface and verify that there are no pieces missing.

Distributed by:
TRACTOR SUPPLY COMPANY
5401 VIRGINIA WAY
BRENTWOOD, TN 37027
For customer support,
Call: 1-888-376-9601
www.TractorSupply.com
MADE IN CHINA



TOOLS REQUIRED (NOT INCLUDED)



PART LIST

KEY	PART	DESCRIPTION	QTY.	KEY	PART	DESCRIPTION	QTY.
A		Tray	1	G		Axle	1
B		Wheel	2	H		Steel Handle	2
C		Leg Brace	1	I		Front Short Steel Strap	1
D		Tray Brace	2	J		Rear Long Steel Strap	1
E		Nose Guard	1	K		Wheel bracket	2
F		Leg	2	L		Sleever	2
				M		Wheel End-cap	2
				N		Axle Pin	2

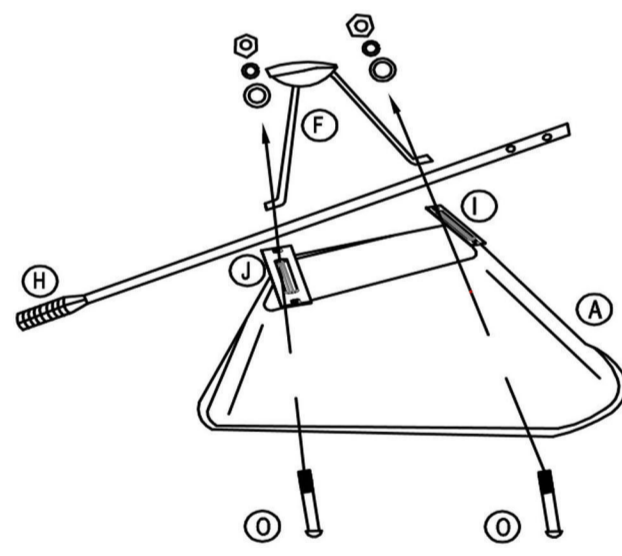
HARDWARE LIST

KEY	PART	DESCRIPTION	QTY.	KEY	PART	DESCRIPTION	QTY.
O		M8x80mm Bolt	8	Q		M8x25mm Bolt	4
P		M8x50mm Bolt	4	R		Large washer	2

ASSEMBLY INSTRUCTIONS

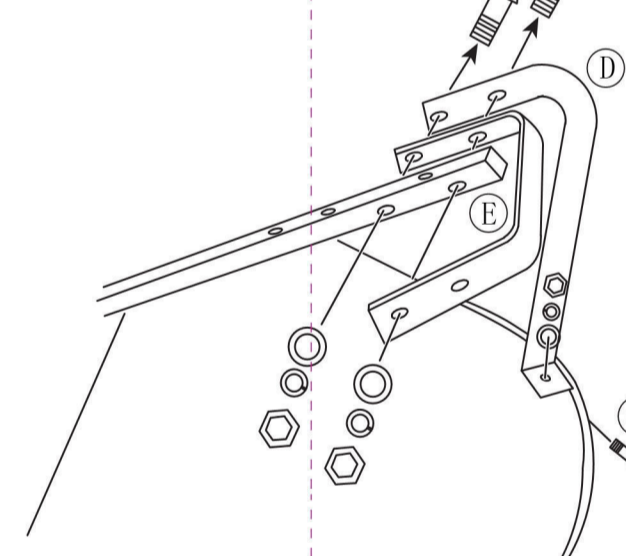
Note: Do not completely tighten screws until assembly has been completed.

STEP 1



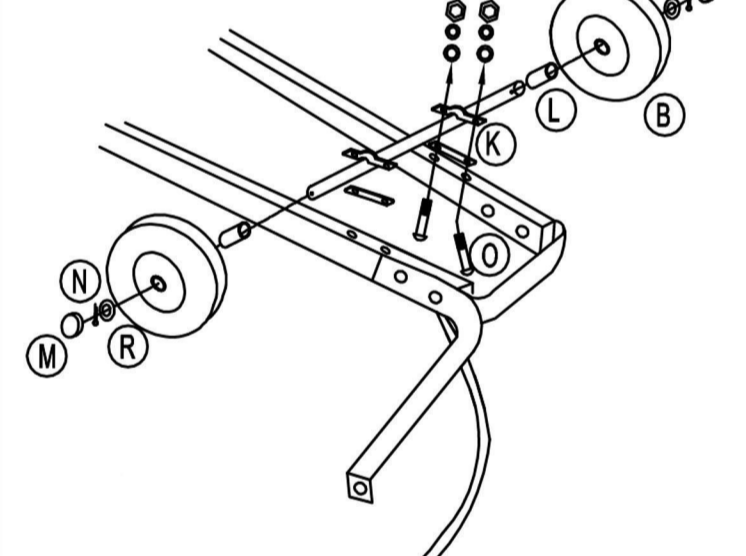
Repeat for second handle

STEP 2



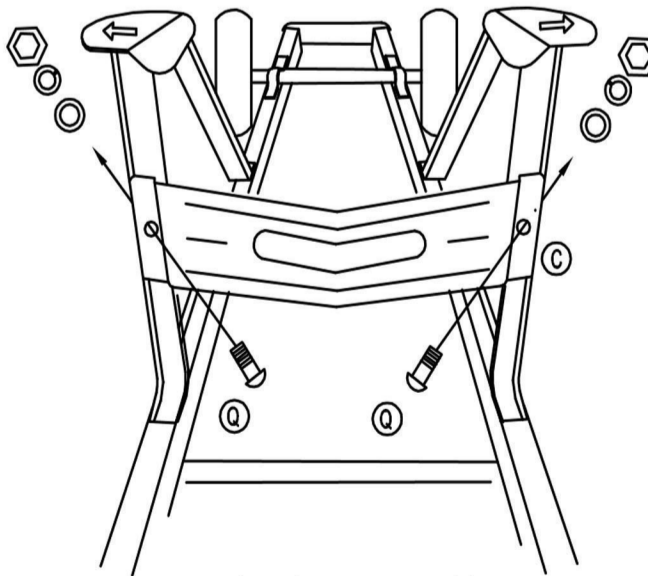
Nose guard & tray brace assembly

STEP 3



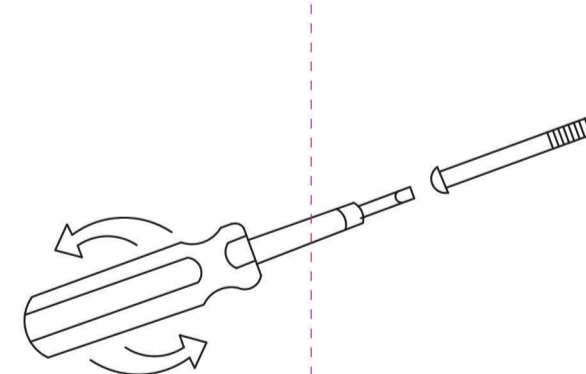
Wheel assembly- Repeat for second leg

STEP 4



Leg brace assembly

STEP 5



Align parts and tighten all bolts securely for safety

CARE INSTRUCTIONS:

After use, clean with a wet, soft cloth or sponge.
Rinse thoroughly. When not in use, store in a dry or sheltered location. If stored outdoors, place upright, upside down or sideways to ensure water does not collect in the tray to avoid rust formation.



ITEM NUMBER:	1006402
DESCRIPTION:	8 cu ft Mega Load WheelBarrow
INSTRUCTION MANUAL SIZE:	445.5mm(W) x 210mm(H)
COLOR:	IC + IC
MATERIAL:	80gsm Woodfree Paper (80磅書紙)
FINISHING:	---
DATE:	Dec 06, 2012
VERSION:	1.8
RELEASED DATE:	Dec 17, 2012

