



1006401

# 6 Cubic Feet

## LARGE-LOAD WHEELBARROW

### INSTRUCTION MANUAL



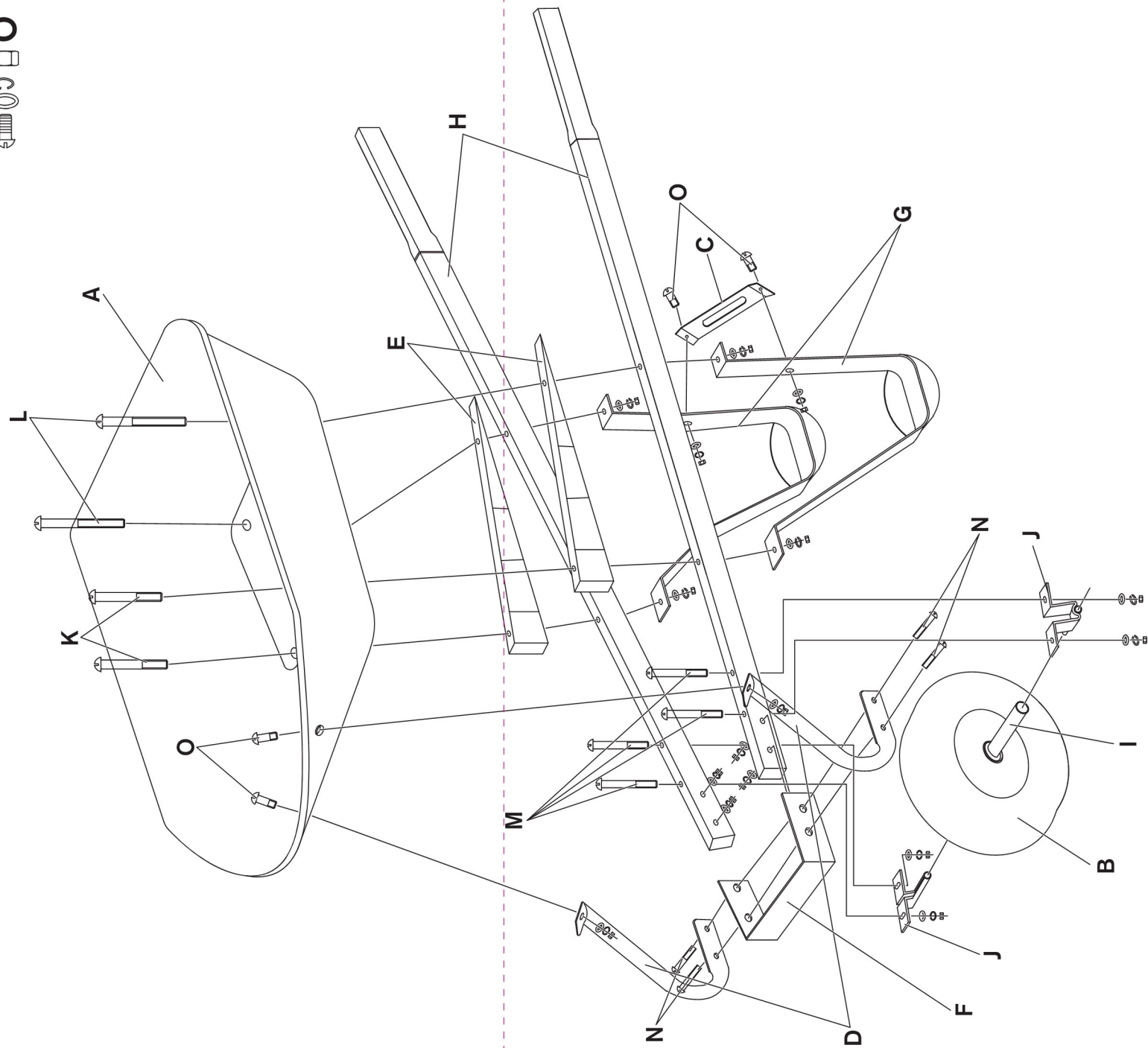
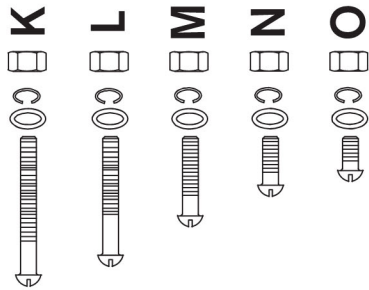
Max. carry capacity for light goods: 6 cu. ft. / 0.17 cu. m.  
Max. carry capacity for loading: 400 lb / 180 kg  
Max. carry capacity for liquid: 106 qt / 100 l

CAUTION: Never inflate tire above 30 PSI (206 Kpa).

#### IMPORTANT INFORMATION:

Read all instructions prior to assembly.  
For ease of assembly, it is recommended that 2 people assemble the wheelbarrow.  
Prior to assembly, lay out all parts on a flat, non-abrasive surface and verify that there are no pieces missing.

Distributed by:  
TRACTOR SUPPLY COMPANY  
5401 VIRGINIA WAY  
BRENTWOOD, TN 37027  
For customer support,  
Call: 1-888-376-9601  
www.TractorSupply.com  
MADE IN CHINA



#### TOOLS REQUIRED (NOT INCLUDED)



#### PART LIST

KEY	PART	DESCRIPTION	QTY.	KEY	PART	DESCRIPTION	QTY.
A		Tray	1	F		Nose Guard	1
B		Wheel	1	G		Leg	2
C		Leg Brace	1	H		Steel Handle	2
D		Tray Brace	2	I		Axle	1
E		Wedge	2	J		Axle Bracket	2

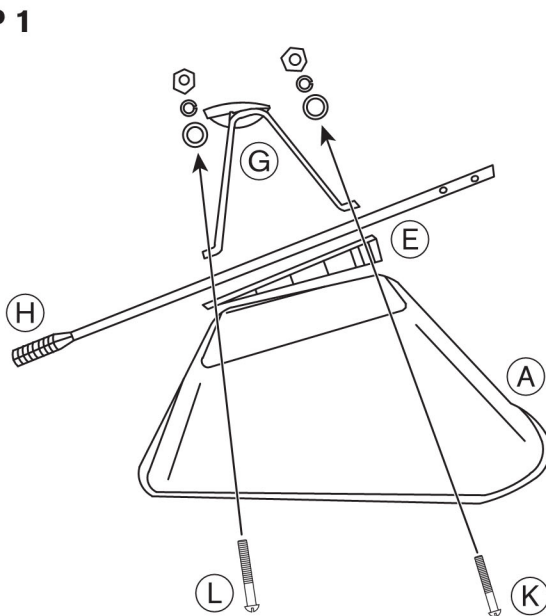
#### HARDWARE LIST

K		M8 X 135mm Bolt	2	M		M8 X 70mm Bolt	4
L		M8 X 80mm Bolt	2	N		M8 X 50mm Bolt	4
				O		M8 X 20mm Bolt	4

#### ASSEMBLY INSTRUCTIONS

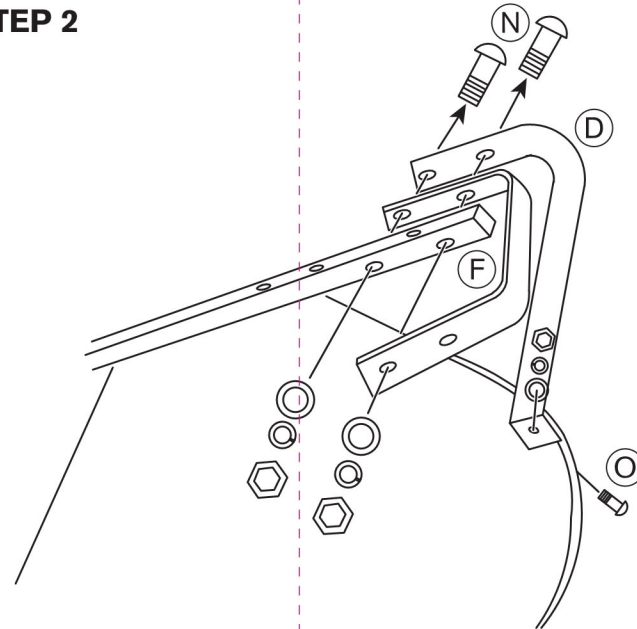
Note: Do not completely tighten screws until assembly has been completed.

##### STEP 1



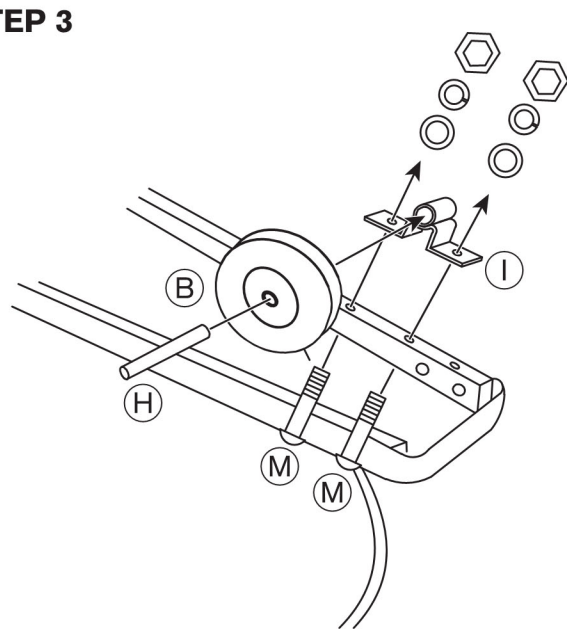
Repeat for second handle

##### STEP 2



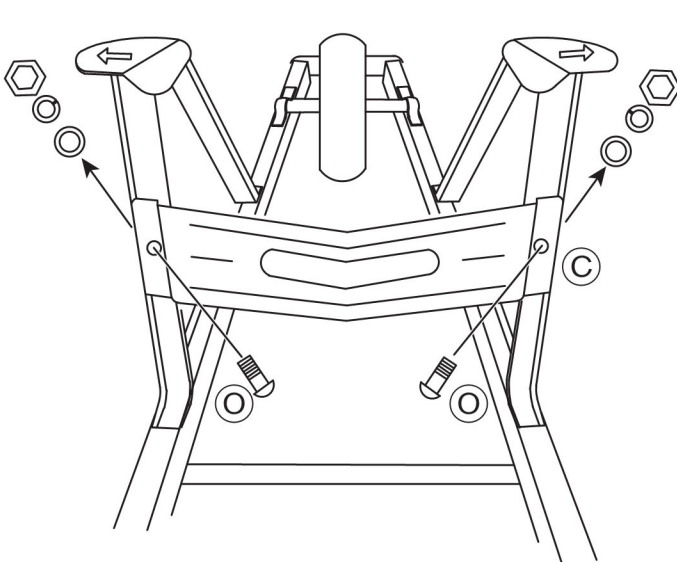
Nose guard assembly

##### STEP 3



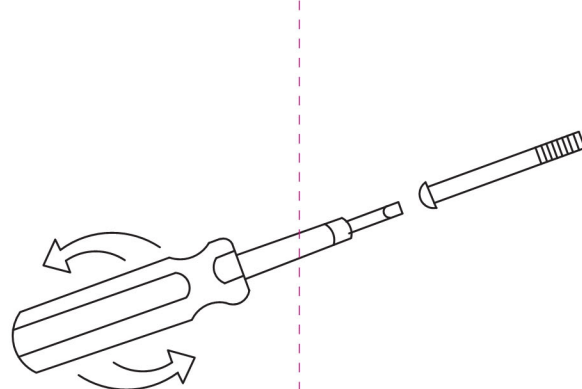
Wheel & tray brace assembly - Repeat for second leg

##### STEP 4



Leg brace assembly

##### STEP 5



Align parts and tighten all bolts securely for safety

#### CARE INSTRUCTIONS:

After use, clean with a wet, soft cloth or sponge.  
Rinse thoroughly. When not in use, store in a dry or sheltered location. If stored outdoors, place upright, upside down or sideways to ensure water does not collect in the tray to avoid rust formation.



ITEM NUMBER:	1006401
DESCRIPTION:	6 cu ft Large Load WheelBarrow
INSTRUCTION MANUAL SIZE:	445.5mm(W) x 210mm(H)
COLOR:	1C + 1C
MATERIAL:	80gsm Woodfree Paper (80磅書紙)
FINISHING:	---
DATE:	Dec 06, 2012
VERSION:	1.8
RELEASED DATE:	Dec 17, 2012

