

# Healthy Pet Food and Water Stations

Small Food Station PFD17-11858

Medium Food Station PFD17-11859

Large Food Station PFD17-11860

Small Water Station PFD17-11854

Medium Water Station PFD17-11855

Large Water Station PFD17-11856

Optional Water Filter (2-Pack) PFD17-11867



- The first Gravity food and water stations with removable stainless steel liners
- Stainless steel is the #1 material vets recommend for your pet's health because it is non-porous, non-reactive, and easy to sanitize. Some pets develop bacterial or allergic reactions if they eat or drink out of a plastic bowl. Noses can become splotchy, pink or dry due to the bacteria harboring in the scratches of a plastic bowl. This is also known as plastic bowl syndrome.
- Made of Polypropylene and polyethylene – both plastic that is BPA-free, so it will not leach toxins into the water.
- Made in the USA - Engineered in the USA, Content 70% USA and Assembled 100% in the USA
- **Why is filtered water important?** Many cats and dogs do not drink as much water as they should. By not drinking enough water, the pet's urine may become concentrated and may lead to urinary tract disease, dehydration, constipation and/or kidney disease. Research shows pets drink more if the water is fresh, clean and odor free. The Healthy Pet Water Filter removes chlorine, sediments and odor from your pet's drinking water.
- Filters are optional but should be replaced every 6-8 weeks.
- Non-skid bottom to help reduce tipping - For the water station, if the reservoir gets unlocked from the base, the water flow valve will close and keep the remaining water from spilling out.

### Healthy Pet Water and Food Stations Continued

- Easy to clean wide opening. Components are dishwasher safe (stainless steel can be sanitized at high temperatures. All other plastic parts can be washed on low-temperature cycle.).
- Both say “indoor only” on packaging, because they do not have UV inhibitors to protect against plastic cracking and fading from sun and weather damage. The feeder is not vermin or insect proof. The water station can be used outdoors in a covered area like a garage, patio, or porch.

Capacity			
Small Feeder	2 pounds	Small Waterer	.5 gallon
Medium Feeder	4 pounds	Medium Waterer	1 gallon
Large Feeder	10 pounds	Large Waterer	2.5 gallons

#### Replacement Parts:

Small Stainless Steel Bowl – CSP17-11862

Medium Stainless Steel Bowl – CSP17-11863

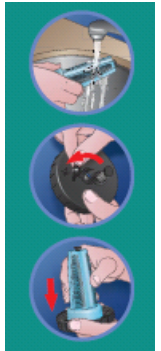
Large Stainless Steel Bowl – CSP17-11864

Water Station Cap Replacement – CSP17-11866

Filter (2-Pack) – PFD17-11867

#### Filter Set-Up

1. Place filter under cold running water for 1-2 minutes and shake lightly before using.
2. Prepare flow control cap by removing plug from air vent hole and place on resting post.
3. Gently push the filter onto the flow-control cap and tighten cap back onto the PetSafe Healthy Pet Water Station.



## Troubleshooting:

Healthy Pet Food Station	
1. The hopper will not lock into place on the base. What to do?	Align the unlock symbol to the front of the water base, now turn clockwise until it locks into place. Turn counter clockwise to unlock from base.
2. The lid on top of the hopper is not locking. What to do?	Align the arrow on the lid to the unlock symbol on the reservoir. Turn either clockwise or counter clockwise to lock. Follow the symbols on the reservoir and the arrow on the lid for alignment.

Healthy Pet Water Station	
1. What if the cap is leaking on my Healthy Pet Water Station?	Check to see if the cap is screwed on uneven. Make sure the gasket is properly fitting. If not using a water filter, the plug must be attached into the air vent hole on the cap.
2. The reservoir will not lock into place on the base. What to do?	Align the unlock symbol to the front of the water base, now turn clockwise until it locks into place. Turn counter clockwise to unlock from base.
3. The lid on top of the reservoir is not locking. What to do?	Align the arrow on the lid to the unlock symbol on the reservoir. Turn either clockwise or counter clockwise to lock. Follow the symbols on the reservoir and the arrow on the lid for alignment.

Healthy Pet Water Filter	
1. There is some black dust in my pet's water from the carbon filter. Is this OK?	Run your filter under water and shake before using. However, if there is some carbon dust in the water and the pet drinks it, there is no harm to your pet from the dust of the carbon. Carbon is used to absorb toxins from the body in the medical industry.
2. I can't fit my filter on correctly. Can you help?	Make sure to remove the plug from the air vent hole and place on the resting post. Gently push the filter onto the flow-control cap and tighten cap back onto the water station.